





# QUANTUM SERIES MADE FOR DEEP SNOW

## Conquer the deep snow with non-compromise technical gear

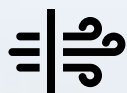
The original Lynx Quantum riding gear offers you the best lightweight performance for mountain and deep snow riding. High-end shell clothing with Cordura fabrics and Sympatex membrane has been developed to meet every freerider's demands.



THE BEST FIT IN  
THE INDUSTRY,  
MAX MOBILITY



ELEMENT  
PROOF



HIGH  
AIRFLOW

sympatex®



GOES GREAT WITH QUANTUM  
**HYBRID**



### LYNX PACKABLE DOWN JACKET

Use as a light jacket for cool dry weather or as a very warm mid layer.

Drawcord hem adjustment in pockets.

Primaloft Down-blend insulation with high compression.

Shell: Polyester  
Shaped sleeves.

Microfleece and Spandex at underarm vents.

Drawcord hem adjustment in pockets.

Sold with stowable pocket.

### LYNX HYBRID JACKET

Light and versatile mid layer jacket for active riders.

Strategically placed elastic knit material and panels with insulation

Ultralight Teflon water repellent material  
Primaloft Black Insulation  
YKK zippers



REGULATE  
WARMTH



MULTI-USE



PACKABLE  
DESIGN IS GREAT  
FOR ON-THE-GO  
AND TRAVEL!

# NEW IN QUANTUM SEGMENT

## PRO

DEVELOPED WITH LYNX AMBASSADORS

Experience the most durable, lightweight, no-compromise technical riding gear in Quantum series. We made the Quantum styles even better! Now featuring SYMPATEX Three Layer with no separate liner, which provides a superior layering and mobility experience for riding in deep snow, truly PRO experience!

- Lightweight 3-ply jackets, highpants and one-piece suits for deep snow riders.
- 100% waterproof, 100% windproof, optimally breathable Sympatex material
- Ultra durable Cordura reinforcement fabric on high wear areas
- Articulated sleeves and knees to ensure freedom of movement in every riding position
- No mesh liner
- Water repellent YKK zippers
- Reflectives for safe visibility
- D-Rings



### PRO HIGHPANTS

- Full side leg zippers (can function as vents)
- Dryness and warmth with Primaloft Gold seat construction
- One bib pocket & 2 cargo pockets
- Mid-rise bib height
- Snap adjustable bottom hem
- Zippered boot gaiter with hooks

### PRO JACKET

- Two-way front zipper
- Backpack compatible venting
- Two Front vents & Two Back vents
- Two cargo pockets, one chest pocket and one sleeve pocket.
- Removable hood
- Adjustable collar, adjustable cuffs (thumb hole gaiter)
- Adjustable bottom hem



### LYNX HYBRID OPS

New light and versatile insulated mid layer onepiece for our riders. This removable liner is a perfect piece to add versatility and warmth for under shell onepiece.

- Ultralight water repellent fabric
- Strategically placed elastic knit material and panels with insulation
- Primaloft Black Insulation
- Zipper drop seat for easy access
- Full-length legs
- YKK zippers

### LYNX HYBRID SHORTS

Light and versatile mid layer shorts for active riders.

- Light and versatile mid layer shorts for active riders
- Ultralight water repellent material
- Primaloft Black Insulation
- Higher back waist and knee length
- 2-way YKK zippers at both sides.
- Packable design is great for on-the-go and travel!



### PRO OPS

- Two-way front zipper
- Backpack compatible venting
- Two cargo pockets, one chest pocket and one sleeve pocket.
- Removable hood
- Adjustable collar, adjustable cuffs (thumb hole gaiter)
- Full side leg zippers (can function as vents)
- Dryness and warmth with Primaloft Gold seat construction
- Removable suspenders & Waist adjustment straps
- Zippered boot gaiter with hooks





sympatex®

# QUANTUM SERIES PERFORMANCE AND SUSTAINABILITY GO HAND IN HAND

We are  
the first  
generation,



100% WATERPROOF



100% WINDPROOF



OPTIMALLY BREATHABLE



DURABLE



RECYCLABLE & RECYCLED



PFC-FREE



PTFE-FREE



CO2 NEUTRAL

Re-Close the loop.  
Together.



[SYMPATEX.COM](https://www.sympatex.com)



# NEW IN SQUADRON SEGMENT

## FLEX

Light and multifunctional shell jackets and one-piece suits, and partly insulated shell highpants are designed for deep snow riding and winter sports, and now comes with the new Stretch Shell fabric.



### FLEX JACKET MEN'S AND LADIES'

- RPM Max shell material
- Insulation on front chest & sleeve top: Primaloft Black 40 grams
- All seams sealed
- Preshaped sleeves and elbows
- Removable, adjustable hood
- Offset center front opening
- Waterproof YKK zippers
- Two front ventilation underarm with mesh
- Two spacious pockets at front, 1 chest pocket, 1 sleeve pocket
- One inner chest pocket; water & vapour proof pocket for cell phone etc.
- One inner mesh pocket
- D-ring killer loop at hem right side
- Lynx / Squadron prints

### FLEX HIGHPANTS MEN'S AND LADIES'

- Waterproof, windproof, breathable and durable shell material. RPM Max.
- All seams sealed
- Reinforcement fabric on high wear areas.
- Insulation on seating area: Primaloft Black 60 grams
- Bib construction for extra cover
- Full length side zippers
- Elastic construction at back waist for flexibility
- Adjustable suspenders, crossed at back
- One spacious cargo pocket
- Preshaped and padded knees with removable knee pads
- Flexible storm gaiters with snap system attachment to boots
- Killer loop D-ring at waist
- Waterproof YKK zippers
- Reflective film taping at back lower legs



### FLEX OPS MEN'S AND LADIES'

- Waterproof, windproof, breathable and durable shell material. RPM Max.
- All seams sealed
- Reinforcement fabric on high wear areas.
- Two front ventilation underarm with mesh
- Two spacious pockets at front, one chest pocket, one sleeve pocket
- Elastic construction at back waist for flexibility
- Insulation on seating area: Primaloft Black 60 grams
- Killer loop D-ring at waist
- Waterproof YKK zippers
- Preshaped and padded knees with removable knee pads



# HOW TO FIND A PERFECT SUIT FOR YOU

GOOD

## SQUADRON



KEY BENEFITS



ELEMENT  
PROOF



HIGH  
AIRFLOW



MULTI-USE

BETTER

## QUANTUM



KEY BENEFITS



ELEMENT  
PROOF



HIGH  
AIRFLOW

sympatex®

BEST

## QUANTUM PRO



KEY BENEFITS



ELEMENT  
PROOF



MAX  
AIRFLOW



NO FRILLS  
SHELL



MAX  
MOBILITY

sympatex®

3-PLY  
LIGHTWEIGHT  
SHELL



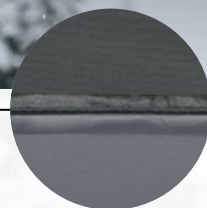
# TECHNOLOGIES

OUR RIDING GEAR AND TECHNICAL WEAR ARE BUILT WITH ADVANCED TECHNOLOGIES THAT PROTECT YOU WITH WARMTH, WATERPROOFNESS, LIGHTWEIGHT AND BREATHABILITY.



## PRIMALOFT®

A high-performance insulation with the full spectrum of benefits to brave the elements. Warmer, drier, softer and more compressible than any other synthetic insulation.



## sympatex®

### RPM/RPM MAX

Coatings that provide maximum waterproofness, windproofness and breathability.

**RPM Max: All seams & logos sealed**

**RPM: Critical seams & logos sealed**

## YKK

We use the world's best - YKK zippers - recognized for quality and reliability.

## E LINQ CONNECTOR SYSTEM

Some of our Lynx jackets have provisions built in for a heated shield wire - riders can leave the wire in the jacket securely fastened and out of the way.

## REINFORCEMENT FABRIC

Often added to garment zones that need extra durability, such as arms, back hem, inner legs, and crotch for tough yet flexible comfort.





# COMFORT IS FREEDOM

## Nature's Best

Loft

Lightweight

Soft

Packable

## Science's Best

Rebels Water

Warm When Wet

Dries Faster

**PRIMALOFT®**



The PrimaLoft® logo is your cue that you're getting the highest performing materials for comfort in any condition.



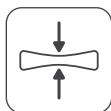
### **Warmth without bulk**

A high warmth-to-weight ratio means you don't need bulk to stay warm



### **Water-resistant**

Absorbs less moisture from the start so you stay drier and warmer



### **Packable**

Packs down easily for stashing in tight spaces



### **Lightweight**

All the warmth you need with little weight



### **Superior softness**

Enjoy unsurpassed softness that feels great on your body and contributes to a flattering fit

DISCOVER MORE AT **PRIMALOFT.COM**

PrimaLoft® is a registered trademark of PrimaLoft, Inc. ©2021 PrimaLoft, Inc.

# NEW IN STAMINA SEGMENT

# TRAIL

New insulated, functional jackets and pants for trail, crossover, adventure & utility segments.



## TRAIL JACKET

### MEN'S AND LADIES'

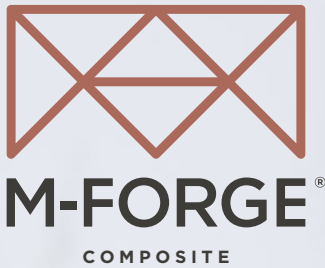
- New insulated, functional jacket for trail, crossover, adventure & utility segment.
- 100% waterproof, breathable and windproof
- 133g of PrimaLoft® Black insulation
- (200g insulation on removable collar)
- RPM Max: 100% seams and logos sealed
- Double center front flap insulated for heat retention and wind protection
- Polar fleece at front body and top arms for added warmth
- E LinQ system wire cable
- Additional removable collar to seal air entry
- Mixed (18) option with Hi-Vis coloration optimal for Work and Utility users

## TRAIL PANTS

### MEN'S AND LADIES'

- 100% waterproof, breathable and windproof
- 133g of PrimaLoft® Black insulation all over
- RPM Max: 100% seams and logos sealed
- Polar fleece at seat
- Preshaped and padded knees
- Reinforcement fabric on high wear areas
- Ladies' version: drop seat design





# THE MATERIAL OF CHOICE FOR PREMIUM HELMETS

LIGHT. STRONG. AFFORDABLE.



Lightweight



Excellent impact  
performance



Fracture resilience to  
multiple impacts



Reduced rebound



Weatherability



Eco-friendly



Learn why M-Forge  
Composites are  
the best choice for  
helmet technology at  
[www.m-forge.com](http://www.m-forge.com)



# FIDLOCK SYSTEM

**FIDLOCK helmet buckles** combine safety with single-handed use and comfort, even with gloves, for innovative head protection. The magnetic, automatic closing mechanism makes fastening a helmet as easy as possible for users. The single handed use allows our helmet buckles for sports, work and other activities to be opened quickly and intuitively.

## HELMETS



NEW

**LYNX RADIENT 2.0 CROSS  
HELMET (DOT/ECE)**

664055\_90 Black  
664055\_30 Red  
664055\_83 Royal Blue  
XS, S, M, L, XL, 2XL

- The Lynx Radien snocross-style helmet delivers protection beyond typical helmet performance thanks to its advanced M-FORGE® Composite technology construction.
- The ultimate helmet for lightweight protection and superior rider comfort. Fidlock closure system.
- Face Mask included.
- Improved interior lining material.



NEW

**LYNX RADIENT 2.0 RACE  
EDITION (DOT/ECE)**

664056\_94  
XS, S, M, L, XL, 2XL

- The Lynx Radien snocross-style helmet delivers protection beyond typical helmet performance thanks to its advanced M-FORGE® Composite technology construction.
- The ultimate helmet for lightweight protection and superior rider comfort.
- Double-D closure system.
- Face Mask included.
- Improved interior lining material.

**LYNX RADIENT 2.0 CROSS  
HELMET (DOT/ECE)**

664052\_06 Fire Red  
664052\_18 Mixed Color  
664052\_84 Starlight Blue  
XS, S, M, L, XL, 2XL

- The Lynx Radien snocross-style helmet delivers protection beyond typical helmet performance thanks to its advanced M-FORGE® Composite technology construction.
- The ultimate helmet for lightweight protection and superior rider comfort. Double D-ring closure, Fidlock system.
- Face Mask included.

NEW

**LYNX RADIENT CROSS HELMET PEAK**

669165\_90 Black  
669165\_94 Black with Graphics  
669165\_30 Red  
669165\_83 Royal Blue  
Onesize  
Replacement part

**LYNX RADIENT CROSS HELMET PEAK**

669147\_06 Fire Red  
669147\_18 Mixed Color  
669147\_84 Starlight Blue  
Onesize  
Replacement part

**LYNX RADIENT HELMET TEC MASK**

669156\_90 Black  
M, L

**LYNX RADIENT HELMET  
SPARE SCREW KIT**

669148\_90 Black  
Onesize

**LYNX RADIENT CHIN CURTAIN**

669166\_09 Grey  
Onesize  
• Improved interior lining material.

**LYNX RADIENT CHIN CURTAIN**

669150\_90 Black  
Onesize

NEW

**LYNX RADIENT CHEEK PADS**

669167\_09 Grey  
XS, S, M, L, XL, 2XL  
• Improved interior lining material.

**LYNX RADIENT CHEEK PADS**

669151\_90 Black  
XS, S, M, L, XL, 2XL



# PYRA HELMET

## KEY BENEFITS



LIGHTWEIGHT



AFFORDABLE



DOT AND ECE  
CERTIFIED

## USAGE

DEEP SNOW,  
RACING

## PRODUCT PERFORMANCE



WARMTH



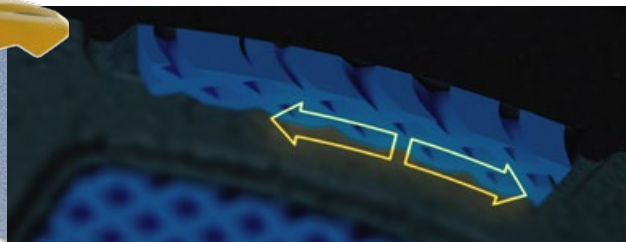
AIRFLOW



LIGHTWEIGHT

## ERT

Energy reduction technology helps absorb the shock in the case of a fall from both direct and rotational impacts.



## AIRFLOW

Don't sweat the ride with an open chin, removable wind deflector and rear vents.



**929041**  
Yellow (10)



**929041**  
Red (30)



**929041**  
Indigo Blue (82)



**929041**  
Charcoal Grey (07)



**929041**  
Grey (09)



**NEW**

## OXYGEN CARBON HELMET (DOT)

929028\_90 Black  
XS, S, M, L, XL, 2XL, 3XL

- Lightweight CARBON M-FORGE® Composite shell
- Sun visor heated chamber
- Amplified heated visor with pivot contact system
- Retractable amber sun visor

- Prescription eyeglasses friendly
- Durable anti-fog and anti-scratch coatings.
- NCS System: Reduces noise
- Robust detents allow precise opening adjustments for airflow.
- Neck skirt to reduce air intrusion.
- Lightweight battery-less rear LED light for added rider safety.
- eLinQ rear magnet connector.
- Unique remote control with visor heat indicators.
- Ready to receive communication system.
- 2 shell sizes for better fit and comfort.
- Ratcheting quick-release chin strap.
- 1850 g ± for large shell.
- D.O.T. certified



# EXOME HELMET

## KEY BENEFITS



HEATED



FOG FREE



CERTIFIED  
DOT

## USAGE

TRAIL

## PRODUCT PERFORMANCE



WARMTH



AIRFLOW



LIGHTWEIGHT



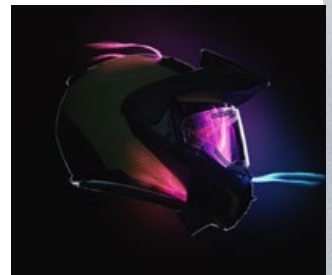
## MODULARITY

This modular helmet makes it easy for you to talk, eat and ride without taking your helmet off! Open the visor, the chin and the interior mask to adapt to your ride.



## AIRFLOW

The optimized mask system sucks out the moisture within your helmet for a fog free experience. The vents also allow for you to customize the air intake easily.



## EXOME



**929035**  
Black (90)

**929035**  
White (01)

## EXOME SPORT



**929036**  
Yellow (10)



**929036**  
Red (30)



**929036**  
Indigo Blue (82)



**929036**  
Charcoal Grey (07)



**929036**  
Grey (09)

## EXOME SPORT RADIANT



**929037**  
Yellow (10)



**929037**  
Red (30)



**929037**  
Indigo Blue (82)



**929037**  
Charcoal Grey (07)



**929037**  
Grey (09)



## GOGGLES



NEW

### RADIEN 2.0 SPECIAL EDITION GOGGLES

669160\_99 Chrome  
669160\_11 Gold  
669160\_18 Mixed Color  
669160\_83 Royal Blue

Onesize

- Double cylindrical mirror or grey lens placed in a nano-frame. Additional cylindrical clear lens for low light conditions and goggle pouch included in the package.
- Lynx cypher Graphic design on the strap
- One piece lens concept: noseguard integrated to the lens
- Innovative magnetic quickchange lens system
- Wide field of view, both horizontal and vertical
- Anti-fog and anti-smudge coating
- UVA/UVB protected



### RADIEN GOGGLES SPARE LENS (BLACK FRAME)

669142\_90 Black  
669142\_80 Blue  
669142\_00 Clear  
669142\_11 Gold  
669142\_70 Green  
669142\_23 Mirror Multicolor  
669142\_22 Mirror Silver  
669142\_36 Pink  
669142\_30 Red  
669142\_10 Yellow

Onesize

- Interchangeable lens technology gives you the option to change lenses out on your goggles.
- Having the option to easily swap lenses if the weather takes a turn means the option to customize your goggle for the most optimal visual experience
- Spare lenses with black frame (without noseguard) for Lynx Radien 2.0 goggles.
- UVA/UVB protected



NEW

### RADIEN 2.0 GOGGLES

669162\_90 Black  
669162\_07 Charcoal Grey  
669162\_36 Pink  
669162\_30 Red

Onesize

- Double cylindrical mirror or grey lens placed in a nano-frame. Additional cylindrical clear lens for low light conditions and goggle pouch included in the package.
- Lynx cypher Graphic design on the strap
- One piece lens concept: noseguard integrated to the lens
- Innovative magnetic quickchange lens system
- Wide field of view, both horizontal and vertical
- Anti-fog and anti-smudge coating
- UVA/UVB protected



### LYNX RADIEN 2.0 BLACK SPARE LENS (NOSEGUARD)

669152\_80 Blue  
669152\_00 Clear  
669152\_06 Fire Red  
669152\_11 Gold  
669152\_70 Green  
669152\_36 Pink  
669152\_57 Smoke  
669152\_10 Yellow

Onesize

- Interchangeable lens technology gives you the option to change lenses out on your goggles.
- Having the option to easily swap lenses if the weather takes a turn means the option to customize your goggle for the most optimal visual experience
- Spare lenses with black frame (noseguard) for Lynx Radien 2.0 goggles
- UVA/UVB protected



### LYNX RADIEN 2.0 GOGGLES

669145\_90 Black  
669145\_84 Starlight Blue

Onesize

- Interchangeable lens technology gives you the option to change lenses out on your goggles. Having the option to easily swap lenses if the weather takes a turn means the option to customize your goggle for the most optimal visual experience!
- Lynx cypher Graphic design on the strap
- One piece lens concept: noseguard integrated to the lens
- UVA/UVB protected
- Innovative magnetic quickchange lens system
- Wide field of view, both horizontal and vertical
- Anti-fog and anti-smudge coating



# RADIEN INTERCHANGEABLE LENSES

## CUSTOMIZE YOUR GOGGLE EXPERIENCE!

**Interchangeable lens technology gives you the option to change lenses out on your goggles.** Having the option to easily swap lenses if the weather takes a turn means the option to customize your goggle for the most optimal visual experience!

### HOW TO CHOOSE LENS COLORS?

On brighter days, a darker or mirror lens will help to protect your eyes more from the harsh reflections of the sun on the snow. Flat light conditions require a lens that will allow more light through so you can use all the available light to your advantage. Medium tint lenses are made to be adaptable to a variety of

conditions. Lightly tinted lenses allow as much light in as possible and provide you with enhanced contrast throughout those darker days and snowfall. Clear lenses also for snowfall and dark conditions.

**All Radien lenses are UV (UVA/UVB) protected.**



**Smoke**  
VLT 6.83%



Smoke lens tint ideal for very bright and sunny conditions.

**Fire mirror**  
VLT 19.94%



Amber base lens tint with multi-layer red mirror designed to filter out blue light for enhanced shadow contrast in moderately flat light conditions.

**Blue mirror**  
VLT 18.93%



Designed to reduce overall brightness while preserving 100 percent normal color recognition.

**Pink mirror**  
VLT 22.94%



Designed to reduce overall brightness while preserving 100 percent normal color recognition.

**Green mirror**  
VLT 33%



Designed to reduce overall brightness while preserving 100 percent normal color recognition.

**Fire mirror**  
VLT 19.94%



**FOR ENHANCED SHADOW CONTRAST**  
Amber base lens tint with multi-layer red mirror designed to filter out blue light for enhanced shadow contrast in moderately flat light conditions.

**Yellow**  
VLT 61.65%



A vibrant lens tint with light silver mirror that increases visual acuity in extremely flat and low light conditions.

**Gold**  
VLT 74.13%



Light rose base lens tint with a multi-layer gold mirror enhances color definition and increases depth perception in varying levels of low-light conditions.

**Yellow**  
VLT 61.65%



A vibrant lens tint with light silver mirror that increases visual acuity in extremely flat and low light conditions.

**Clear**  
VLT 83%



The ideal lens for dark, night-time use and snowfall conditions.

**Yellow**  
VLT 61.65%



A vibrant lens tint with light silver mirror that increases visual acuity in extremely flat and low light conditions.

**Clear**  
VLT 83%



The ideal lens for dark, night-time use and snowfall conditions.





## QUANTUM



NEW

## LYNX QUANTUM PRO JACKET

650144\_90 Black  
650144\_42 Deep Purple  
650144\_06 Fire Red  
S, M, L, XL, 2XL, 3XL

- Lightweight 3-ply shell jacket for deep snow riders.
- 100% waterproof & windproof, optimally breathable Sympatex material
- No mesh liner
- Backpack compatible venting
- Two Front vents & Two Back vents
- Two cargo pockets, one chest pocket and one sleeve pocket.
- Articulated sleeves to ensure freedom of movement in every riding position
- Ultra durable Cordura reinforcement fabric on high wear areas
- Water repellent two-way front YKK zippers
- Removable hood
- Adjustable collar, adjustable cuffs (thumb hole gaiter)
- Adjustable bottom hem
- D-Ring



NEW

## LYNX QUANTUM JACKET

650141\_14 Autumn Red  
650141\_90 Black  
650141\_07 Charcoal Grey  
650141\_83 Royal Blue  
XS, S, M, L, XL, 2XL, 3XL

- Lightweight shell jacket is specially designed for active riding in deep snow.
- 100% waterproof & windproof, optimally breathable Sympatex material
- Cordura reinforcement fabric on high wear areas
- Mesh lining
- Two-way water repellent YKK zippers on front
- One large chest pocket, two side pockets
- Ultra durable Cordura reinforcement fabric on high wear areas
- Backpack friendly shoulders and front venting
- Reflective details for optimized visibility
- Removable hood



NEW

## LYNX QUANTUM PRO HIGHPANTS

651135\_90 Black  
S, M, L, XL, 2XL, 3XL

- Lightweight 3-ply highpants for deep snow riders.
- 100% waterproof & windproof, optimally breathable Sympatex material
- Ultra durable Cordura reinforcement fabric on high wear areas
- No mesh liner
- Articulated knees to ensure freedom of movement in every riding position
- Water repellent two-way YKK front zippers
- One bib pocket & 2 cargo pockets
- D-Ring
- Full side leg zippers (can function as vents)
- Mid-rise bib height
- Dryness and warmth with Primaloft Gold seat construction
- Snap adjustable bottom hem
- Zippered boot gaiter with hooks



NEW

## LYNX QUANTUM PANTS

651134\_14 Autumn Red  
651134\_90 Black  
651134\_07 Grey  
XS, S, M, L, XL, 2XL, 3XL

- Lightweight shell highpants are specially designed for active riding in deep snow.
- Improved style and fitting
- 100% waterproof & windproof, optimally breathable Sympatex material
- Primaloft Gold insulation and fleece lining on seat
- Cordura reinforcement fabric on high wear areas
- High front and back bib
- Panels with stretch fabric on waist
- One bib chest pocket, one-sided cargo pockets
- Shaped, reinforced and padded knees (removable pads)
- Water repellent 2-way YKK zippers on front
- Reflective details for optimized visibility
- Storm gaiters with boot to lace snap connector



NEW

## LYNX QUANTUM PRO OPS

650145\_90 Black  
650145\_42 Deep Purple  
650145\_06 Fire Red  
XS, S, M, L, XL, 2XL, 3XL

- Lightweight 3-ply shell onepiece for deep snow riders.
- 100% waterproof & windproof, optimally breathable Sympatex material
- No mesh liner
- Articulated sleeves and knees to ensure freedom of movement in every riding position
- Ultra durable Cordura reinforcement fabric on high wear areas
- Two cargo pockets, one chest pocket and one sleeve pocket.
- Backpack compatible venting
- Two Front vents & Two Back vents
- Two-way front zipper
- Reflectives for safe visibility
- D-ring
- Removable hood
- Adjustable collar, adjustable cuffs (thumb hole gaiter)
- Full side leg zippers (can function as vents)
- Dryness and warmth with Primaloft Gold seat construction
- Removable suspenders and waist adjustment straps
- Zippered boot gaiter with hooks



NEW

## LYNX QUANTUM OPS

650142\_14 Autumn Red  
650142\_90 Black  
650142\_07 Charcoal Grey  
650142\_83 Royal Blue  
XS, S, M, L, XL, 2XL, 3XL

- Lightweight shell onepiece suit is specially designed for active riding in deep snow.
- Improved style and fitting
- 100% waterproof & windproof, optimally breathable Sympatex material
- Primaloft Gold insulation and fleece lining on seat
- Cordura reinforcement fabric on high wear areas
- Comfortable fit that allows freedom of movement
- Two-way water repellent YKK front zipper
- Backpack friendly shoulders and front venting
- One large chest pocket, two cargo pockets
- Reflective details for optimized visibility
- Shaped and reinforced knees
- Storm gaiters with boot to lace snap connector



## STAMINA



NEW

**LYNX STAMINA TRAIL JACKET**

650137\_90 Black  
650137\_18 Mixed Color  
S, M, L, XL, 2XL, 3XL

- New insulated, functional jacket for trail, crossover, adventure & utility segment.
- 100% waterproof, breathable and windproof
- 133g of PrimaLoft® Black insulation
- (200g insulation on removable collar)
- RPM Max: 100% seams and logos sealed
- Double center front flap insulated for heat retention and wind protection
- Polar fleece at front body and top arms for added warmth
- E LinQ system wire cable
- Additional removable collar to seal air entry
- Mixed (18) option with Hi-Vis coloration optimal for Work and Utility users



NEW

**LYNX STAMINA TRAIL JACKET W**

650138\_90 Black  
650138\_09 Grey  
XS, S, M, L, XL, 2XL

- New insulated, functional jacket for trail, crossover, adventure & utility segment.
- 100% waterproof, breathable and windproof
- 133g of PrimaLoft® Black insulation
- (200g insulation on removable collar)
- RPM Max: 100% seams and logos sealed
- Single center front flap insulated for heat retention and wind protection
- Polar fleece at front body and top arms for added warmth
- Reflective details for maximum visibility
- E LinQ system wire cable
- Additional removable collar to seal air entry

**LYNX STAMINA ENDURO PANTS**

651128\_90 Black  
651128\_09 Grey  
S, M, L, XL, 2XL, 3XL

- Crossover highpants with Sympatex fabrics and mid-weight insulation for riding on and off trail.
- 100% waterproof & windproof, optimally breathable Sympatex material and all seams sealed.
- Cordura reinforcement fabric on high wear areas.
- PrimaLoft Black Eco 100 grams insulation
- High front and lower back bib & bib pocket
- Stretch panels at sides and back and adjustable suspenders
- Preshaped and padded knees with removable knee pads
- Flexible storm gaiters with snap system attachment to boots
- Killer loop D-ring at waist ans full-length water repellent YKK 2-way zippers



NEW

**LYNX STAMINA TRAIL PANTS**

651131\_90 Black  
S, M, L, XL, 2XL, 3XL

- New insulated, functional pants for trail, crossover, adventure & utility segment.
- 100% waterproof, breathable and windproof
- 133g of PrimaLoft® Black insulation all over
- RPM Max: 100% seams and logos sealed
- Polar fleece at seat
- Preshaped and padded knees
- Reinforcement fabric on high wear areas



NEW

**LYNX STAMINA TRAIL PANTS W**

651132\_90 Black  
XS, S, M, L, XL, 2XL

- New insulated, functional pants for trail, crossover, adventure & utility segment.
- 100% waterproof, breathable and windproof
- 133g of PrimaLoft® Black insulation all over
- RPM Max: 100% seams and logos sealed
- Polar fleece at seat
- Preshaped and padded knees
- Reinforcement fabric on high wear areas
- Drop seat design

**LYNX STAMINA ENDURO JACKET**

650134\_90 Black  
650134\_09 Grey  
S, M, L, XL, 2XL, 3XL

- Ultra high performance jacket for riding trail and off trail.
- 100% waterproof & windproof, optimally breathable Sympatex material.
- Cordura reinforcement Sympatex fabric
- All seams sealed
- PrimaLoft Black Eco insulation 100 grams
- Sporty and articulated fitting to give the optimal movement in riding
- Offset center front opening
- Preshaped sleeves and elbows
- E linq construction inside
- Waterproof YKK zippers
- Underarm & back ventilations
- D-ring killer loop at hem right side

**LYNX STAMINA ENDURO JACKET RE**

650139\_06 Fire Red  
S, M, L, XL, 2XL, 3XL

- Ultra high performance jacket for riding trail and off trail. Enduro Race Edition jacket is lightly insulated version and with Lynx Racing color and logos.
- 100% waterproof & windproof, optimally breathable Sympatex material.
- Cordura reinforcement Sympatex fabric
- All seams sealed
- Lynx Enduro RE jacket is lightly insulated with PrimaLoft Black Eco insulation 60 grams
- Sporty and articulated fitting to give the optimal movement in riding
- Offset center front opening
- Preshaped sleeves and elbows
- E linq construction inside
- Waterproof YKK zippers
- Underarm & back ventilations
- D-ring killer loop at hem right side



## SQUADRON



NEW

## SQUADRON FLEX JACKET

650149\_90 Black  
650149\_74 Teal

XS, S, M, L, XL, 2XL, 3XL

- Light and multifunctional shell jacket for deep snow riding and winter sports now with new Stretch Shell fabric.
- RPM Max shell material
- Insulation on front chest & sleeve top: Primaloft Black 40 grams
- All seams sealed
- Preshaped sleeves and elbows
- Removable, adjustable hood
- Offset center front opening
- Waterproof YKK zippers
- D-ring killer loop at hem right side



NEW

## SQUADRON FLEX JACKET W

650150\_90 Black  
650150\_74 Teal

XS, S, M, L, XL, 2XL

- Light and multifunctional shell jacket for deep snow riding and winter sports now with new Stretch Shell fabric.
- RPM Max shell material
- Insulation on front chest & sleeve top: Primaloft Black 40 grams
- All seams sealed
- Preshaped sleeves and elbows
- Removable, adjustable hood
- Offset center front opening
- Waterproof YKK zippers
- 2 front ventilation underarm with mesh
- 1 inner mesh pocket
- D-ring killer loop at hem right side
- Lynx / Squadron prints



NEW

## SQUADRON FLEX HIGHPANTS

651137\_90 Black  
651137\_74 Teal

XS, S, M, L, XL, 2XL, 3XL

- Partly insulated shell highpants for deep snow riders and winter activities now with new Stretch Shell fabric.
- Waterproof, windproof, breathable and durable RPM Max shell material.
- All seams sealed
- Reinforcement fabric on high wear areas.
- Insulation on seating area: Primaloft Black 60 grams
- Bib construction for extra cover
- Full length side zippers
- Elastic construction at back waist for flexibility
- Adjustable suspenders, crossed at back
- One spacious cargo pocket
- Preshaped and padded knees with removable knee pads
- Flexible storm gaiters with snap system attachment to boots
- Killer loop D-ring at waist
- Waterproof YKK zippers
- Reflective film taping at back lower legs



NEW

## SQUADRON FLEX OPS

650143\_90 Black  
650143\_06 Fire Red  
650143\_03 Sand  
650143\_74 Teal

2XS, XS, S, M, L, XL, 2XL

- Light and multifunctional shell one-piece suit for deep snow riding and winter sports now with new Stretch Shell fabric.
- Waterproof, windproof, breathable and durable shell material. RPM Max.
- All seams sealed
- Reinforcement fabric on high wear areas.
- Two front ventilation underarm with mesh
- Two spacious pockets at front, one chest pocket, one sleeve pocket
- Elastic construction at back waist for flexibility
- Insulation on seating area: Primaloft Black 60 grams
- Killer loop D-ring at waist
- Waterproof YKK zippers
- Preshaped and padded knees with removable knee pads



NEW

## SQUADRON FLEX HIGHPANTS W

651138\_90 Black  
651138\_74 Teal

XS, S, M, L, XL, 2XL

- Partly insulated shell highpants for deep snow riders and winter activities now with new Stretch Shell fabric.
- Waterproof, windproof, breathable and durable shell RPM Max material.
- All seams sealed
- Cordura reinforcement fabric on high wear areas.
- Insulation on seating area: Primaloft Black 60 grams
- Bib construction for extra cover
- Elastic construction at back waist for flexibility
- Adjustable suspenders, crossed at back
- One spacious cargo pocket
- Preshaped and padded knees with removable knee pads
- Flexible storm gaiters with snap system attachment to boots
- Killer loop D-ring at waist
- Waterproof YKK zippers, Full length side zippers



NEW

## SQUADRON FLEX OPS W

650147\_90 Black  
650147\_74 Teal

XS, S, M, L, XL, 2XL

- Light and multifunctional shell one-piece suit for deep snow riding and winter sports now with new Stretch Shell fabric.
- Waterproof, windproof, breathable and durable shell material. RPM Max.
- All seams sealed
- Reinforcement fabric on high wear areas.
- Two front ventilation underarm with mesh
- Two spacious pockets at front, one chest pocket, one sleeve pocket
- Elastic construction at back waist for flexibility
- Insulation on seating area: Primaloft Black 60 grams
- Killer loop D-ring at waist
- Waterproof YKK zippers
- Preshaped and padded knees with removable knee pads



### LYNX SQUADRON SHELL JACKET W

650136\_06 Fire Red  
650136\_36 Pink

XS, S, M, L, XL, 2XL

- Partly insulated shell jacket for deep snow riders and winter activities
- RPM Max shell material
- Insulation on front chest & sleeve top: Primaloft Black 40 grams
- All seams sealed
- Preshaped sleeves and elbows
- Removable, adjustable hood
- Offset center front opening
- Waterproof YKK zippers
- 2 front ventilation underarm with mesh
- D-ring killer loop at hem right side



### LYNX SQUADRON SHELL JACKET

650135\_90 Black  
650135\_06 Fire Red  
650135\_12 Orange

XS, S, M, L, XL, 2XL, 3XL

- Partly insulated shell jacket for deep snow riders and winter activities
- RPM Max shell material
- Insulation on front chest & sleeve top: Primaloft Black 40 grams
- All seams sealed
- Preshaped sleeves and elbows
- Removable, adjustable hood
- Offset center front opening
- Waterproof YKK zippers
- 2 front ventilation underarm with mesh
- 1 inner mesh pocket
- D-ring killer loop at hem right side



### LYNX SQUADRON SHELL HIGHPANTS W

651130\_90 Black  
651130\_36 Pink

XS, S, M, L, XL, 2XL

- Partly insulated shell highpants for deep snow riders and winter activities
- All seams sealed
- Cordura reinforcement fabric on high wear areas.
- Insulation on seating area: Primaloft Black Eco 60 grams
- Bib construction for extra cover
- Full length side zippers
- Elastic construction at back waist for flexibility
- Adjustable suspenders, crossed at back
- One spacious cargo pocket
- Preshaped and padded knees with removable knee pads
- Flexible storm gaiters with snap system attachment to boots
- Killer loop D-ring at waist
- Bip pocket
- Waterproof YKK zippers
- Reflective film taping at back lower legs



### LYNX SQUADRON SHELL HIGHPANTS

651129\_90 Black  
651129\_09 Grey

XS, S, M, L, XL, 2XL, 3XL

- Partly insulated shell highpants for deep snow riders and winter activities
- All seams sealed
- Reinforcement fabric on high wear areas.
- Insulation on seating area: Primaloft Black Eco 60 grams
- Bib construction for extra cover
- Full length side zippers
- Elastic construction at back waist for flexibility
- Adjustable suspenders, crossed at back
- One spacious cargo pocket
- Preshaped and padded knees with removable knee pads
- Flexible storm gaiters with snap system attachment to boots
- Killer loop D-ring at waist
- Bip pocket
- Waterproof YKK zippers



### LYNX SQUADRON OPS INSULATED

650140\_77 Army Green

XS, S, M, L, XL, 2XL, 3XL

- Insulated one-piece suit for men for multiuse
- Insulated one-piece with 80gr Primaloft Black insulation
- RPM Max Shell
- All seams sealed
- Reinforcement fabric on high wear areas
- Waterproof YKK zippers
- Front ventilations on armpit with zipper and mesh
- Inner adjustable system on waist and removable suspenders inside.



## TEC LAYER



NEW

### LYNX HYBRID JACKET

659136\_90 Black

659136\_07 Charcoal Grey

XS, S, M, L, XL, 2XL, 3XL

- Light and versatile mid layer jacket for active riders
- Strategically placed elastic knit material and panels with insulation
- Ultralight water repellent material
- Primaloft Black Insulation
- YKK zippers
- Packable design is great for on-the-go and travel!



NEW

### LYNX HYBRID SHORTS

659137\_90 Black

XS, S, M, L, XL, 2XL, 3XL

- Light and versatile mid layer shorts for active riders
- Ultralight water repellent material
- Primaloft Black Insulation
- Higher back waist and knee length
- 2-way YKK zippers at both sides.
- Packable design is great for on-the-go and travel!



NEW

### LYNX HYBRID OPS

650146\_90 Black

XS, S, M, L, XL, 2XL, 3XL

- New light and versatile insulated mid layer one-piece for our riders. This removable liner is a perfect piece to add versatility and warmth for under shell one-piece.
- Ultralight water repellent fabric
- Strategically placed elastic knit material and panels with insulation
- Primaloft Black Insulation
- Zipper drop seat for easy access
- Full-length legs
- YKK zippers
- Packable design is great for on-the-go and travel!



NEW

### LYNX PACKABLE DOWN JACKET

659138\_14 Autumn Red

659138\_90 Black

659138\_07 Charcoal Grey

XS, S, M, L, XL, 2XL, 3XL

- Use as a light jacket for cool dry weather or as a very warm mid layer
- Drawcord hem adjustment in pockets.
- Microfleece and Spandex at underarm vents.
- Down-blend insulation with high compression.
- Shaped sleeves.
- Sold with stowable pocket.
- Shell: Polyester
- Insulation: Primaloft down blend
- Packable design is great for on-the-go and travel!



NEW

### LYNX PACKABLE DOWN JACKET W

659139\_14 Autumn Red

659139\_90 Black

XS, S, M, L, XL, 2XL

- Use as a light jacket for cool dry weather or as a very warm mid layer
- Drawcord hem adjustment in pockets.
- Microfleece and Spandex at underarm vents.
- Down-blend insulation with high compression.
- Shaped sleeves.
- Sold with stowable pocket.
- Shell: Polyester
- Insulation: Primaloft down blend
- Packable design is great for on-the-go and travel!



NEW

### QUANTUM SOFTSHELL JACKET

659129\_90 Black

659129\_09 Grey

XS, S, M, L, XL, 2XL, 3XL

- Windproof lightweight softshell with a water resistant membrane.
- Everyday use.
- Breathable wicking technology.
- Backed by micro-fleece for a soft feel.



NEW

**QUANTUM LIGHT BASE SHIRT**

659121\_09 Grey

S, M, L, XL, 2XL, 3XL

- Technical performance base layer top.
- Coconut fibers actively promote evaporative cooling and odor absorption, and to filter moisture out while trapping warmth in.
- 84% Coconut polyester, 16% spandex.

**LYNX MERINO BASE SHIRT 2.0**

659117\_90 Black

S, M, L, XL, 2XL, 3XL

- Warm and comfortable merino wool base shirt.
- Flatlock stitched seams
- Permanent anti-odor performance
- Moisture wicking

**LYNX MERINO BASE SHIRT 2.0 LADIES**

659119\_90 Black

XS, S, M, L, XL, 2XL

- Warm and comfortable merino wool base shirt.
- Flatlock stitched seams
- Permanent anti-odor performance
- Moisture wicking
- Body temperature regulator



NEW

**QUANTUM LIGHT BASE PANTS**

659122\_09 Grey

S, M, L, XL, 2XL, 3XL

- Technical performance base layer bottom.
- Coconut fibers actively promote evaporative cooling and odor absorption, and to filter moisture out while trapping warmth in.
- 84% Coconut polyester, 16% spandex

**LYNX MERINO BASE PANTS 2.0**

659118\_90 Black

S, M, L, XL, 2XL, 3XL

- Warm and comfortable merino wool base pants.
- Flatlock stitched seams
- Permanent anti-odor performance
- Moisture wicking
- Body temperature regulator
- Elastic waist band

**LYNX MERINO BASE PANTS 2.0 LADIES**

659120\_90 Black

XS, S, M, L, XL, 2XL

- Warm and comfortable merino wool base pants.
- Flatlock stitched seams
- Permanent anti-odor performance
- Moisture wicking
- Body temperature regulator
- Elastic waist band





### LYNX THERMAL BASE SHIRT

659113\_90 Black

S, M, L, XL, 2XL, 3XL

- Thermal base shirt made of high-filament polyester enhanced by slight brushing to provide softness and warmth.
- Mesh paneled under arms for better ventilation and accelerated drying.
- Antimicrobial



### LYNX THERMAL BASE PANTS

659114\_90 Black

S, M, L, XL, 2XL, 3XL

- Thermal base pants made of high-filament polyester enhanced by slight brushing to provide softness and warmth.
- Antimicrobial



### LYNX TECH FLEECE JACKET W

659101\_39 Raspberry

XS, S, M, L, XL, 2XL

- Technical fleece jacket with hood.



### LYNX THERMAL BASE SHIRT LADIES

659115\_90 Black

XS, S, M, L, XL, 2XL

- Thermal base shirt made of high-filament polyester enhanced by slight brushing to provide softness and warmth.
- Mesh paneled under arms for better ventilation and accelerated drying.
- Antimicrobial



### LYNX THERMAL BASE PANTS LADIES

659116\_90 Black

XS, S, M, L, XL, 2XL

- Thermal base pants made of high-filament polyester enhanced by slight brushing to provide softness and warmth.
- Antimicrobial



### LYNX PACKABLE DOWN JACKET W

659108\_36 Pink

XS, S, M, L, XL, 2XL

- Primaloft Down blend with lightness and warmth!
- Use alone or under shell layer for maximum warmth.
- Light Teflon waterrepellent shell material
- YKK Front zippers
- Fitted patterning



### LYNX ONE PIECE MID LAYER

659126\_90 Black • Men's

659100\_90 Black • Ladies'

XS, S, M, L, XL, 2XL, 3XL • Men's

XS, S, M, L, XL, 2XL • Ladies'

- Ideal under Onepiece suit.
- Thermal fleece midlayer onepiece for cold riding conditions and after adventures.
- Super soft stretchy Performance Fleece.
- YKK Two Way Open front zipper with semi-lock sliders.
- Rear zipper for easy seat opening.
- Flatlock seams.

**LYNX****Svala**  
OF FINLAND

## MADE IN FINLAND

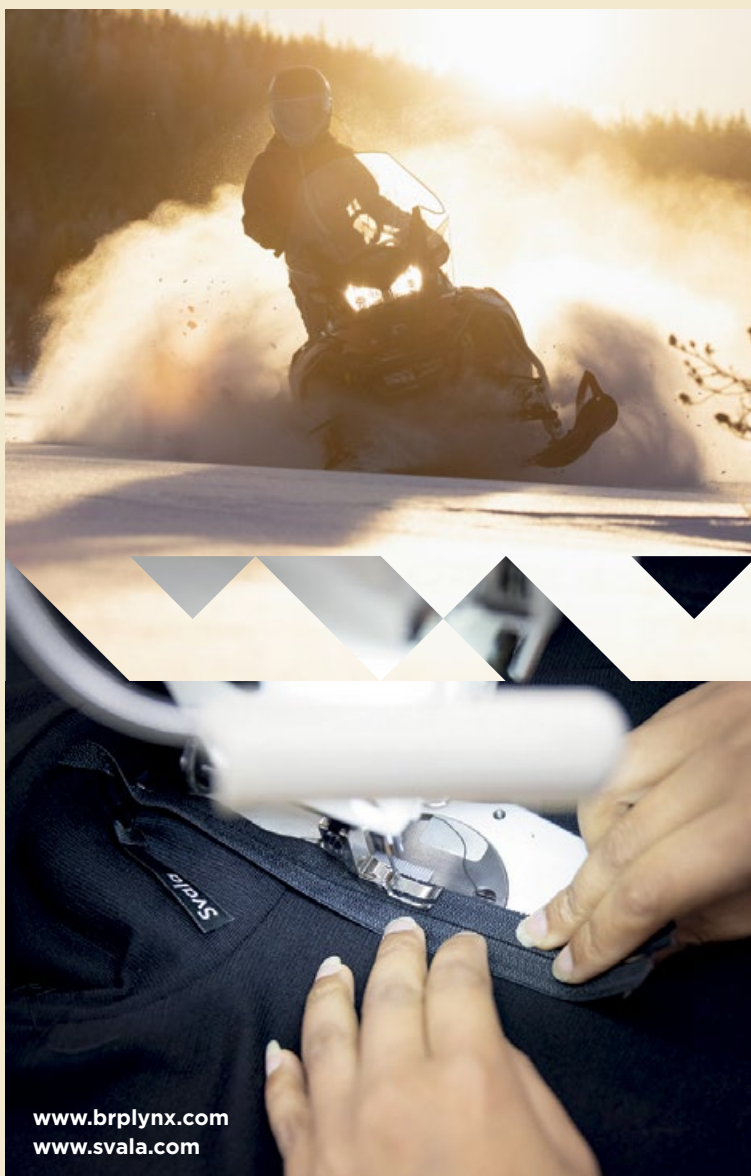
**Svala & Lynx have over 120 years of combined expertise on Nordic winters.**

**Svala's story** began in the 1940s, with the determined women of Käräsämäki, Finland, transforming old army coats into work clothes. Svala's uncompromising R&D work has led to high-quality products on which professionals like cold work specialists rely today.

**The first Lynx snowmobile** was introduced for winter 1968-1969, developing over decades into a world-wide brand loved by riders on both sides of the Atlantic. Lynx is famous for technical solutions for demanding Nordic conditions – in snowmobiles, but also in equipping the riders to stay comfortable in all winter activities.

**THE LYNX X SVALA PRODUCTS** are designed and manufactured to keep you warm and comfortable in even the most demanding conditions.

Collaboration highlights Lynx premium layering principles and importance of wearing layers starting from next to skin to perfect mid layers and Balaclavas.



## LYNX X SVALA

**NEW**

### LYNX X SVALA POWERSTRETCH PRO JACKET

659143\_90 Black  
2XS, XS, S, M, L,  
XL, 2XL, 3XL

- Exclusive Lynx x Svala Co-branding collection style.
- An elastic and warm Fleece jacket for work and leisure. This jacket is made of high-quality

Polartec Power Stretch Pro with a moisture-wicking fleece on the inside and a wear-resistant lint-free polyester on the outside.

- Unisex
- Slim-fit
- Flat seams

**NEW**

### LYNX X SVALA MERINO HYBRID JACKET

659144\_90 Black  
2XS, XS, S, M, L,  
XL, 2XL, 3XL

- Exclusive Lynx x Svala Co-branding collection style.
- Comfortable Hybrid jacket for multiuse. This jacket is made of high-quality Extra warm merino knit and added windproofness

with panels in colla, neck, chest and front sleeves.

- Merino knit and windproof panels
- Unisex
- Slim-fit
- Front zipper
- Two Front pockets with zipper
- Flat seams
- Thumb loops

**NEW**

### LYNX X SVALA MERINO HOODIE

659145\_90 Black  
2XS, XS, S, M, L,  
XL, 2XL, 3XL

- Exclusive Lynx x Svala Co-branding collection style.
- Elastic and cosy Merino hoodie for leisure. It's actually so Trendy that

you want to wear it at town and everywhere. This hoodie is made of 100% high-quality Merino wool knit.

- Unisex
- Slim-fit
- Flat seams





NEW

### LYNX X SVALA MERINO BASE LAYER TOP

659149\_90 Black

2XS, XS, S, M, L, XL, 2XL, 3XL

- Exclusive Lynx x Svala Co-branding collection style.
- Technical two-layer construction with an inner layer of moisture-wicking polypropylene
- Outer layer of SuperWash and moth-protected Merino wool
- Inherently antibacterial.
- Unisex
- Slim-fit
- Flat seams
- Round neckline
- Longer hem at back



NEW

### LYNX X SVALA MERINO BASE LAYER BOTTOM

659150\_90 Black

2XS, XS, S, M, L, XL, 2XL, 3XL

- Exclusive Lynx x Svala Co-branding collection style.
- Technical two-layer construction with an inner layer of moisture-wicking polypropylene
- Outer layer of SuperWash and moth-protected Merino wool
- Inherently antibacterial.
- Unisex
- Slim-fit
- Flat seams
- Elastic waistband



NEW

### LYNX X SVALA MESH BASE LAYER PRO TOP

659147\_90 Black

2XS, XS, S, M, L, XL, 2XL, 3XL

- Exclusive Lynx x Svala Co-branding collection style.
- Worn against the skin, the moisture-wicking antibacterial mesh knit stores air in its loops, which means that the product has a heat-balancing effect regardless of the level of activity. This means that it stays cool in the heat and provides warmth in the cold. This garment performs superbly as a base layer during heavy exercise, even if temperatures drop as low as -15°C. can be worn underneath a thermal layer in which case it wicks moisture to the external clothing layer, airs and creates a warming air layer on top of your skin.
- Unisex
- Slim-fit
- Flat seams
- Round neckline
- Longer hem at back



NEW

### LYNX X SVALA MESH BASE LAYER PRO BOTTOM

659148\_90 Black

2XS, XS, S, M, L, XL, 2XL, 3XL

- Exclusive Lynx x Svala Co-branding collection style.
- Unisex
- Slim-fit
- Flat seams
- Elastic waistband



NEW

### LYNX X SVALA ACTIVE BASE LAYER TOP

659151\_09 Grey

2XS, XS, S, M, L, XL, 2XL, 3XL

- Exclusive Lynx x Svala Co-branding collection style.
- This Merino and Tencel blend base layer is perfect for both cooler conditions and summer temperatures.
- Wicks moisture from the skin while the outer layer of Merino wool warms
- Inherently antibacterial
- Unisex
- Slim-fit
- Flat seams
- Round neckline
- Longer hem at back



NEW

### LYNX X SVALA ACTIVE BASE LAYER BOTTOM

659152\_09 Grey

2XS, XS, S, M, L, XL, 2XL, 3XL

- Exclusive Lynx x Svala Co-branding collection style.
- This Merino and Tencel blend base layer is perfect for both cooler conditions and summer temperatures.
- Wicks moisture from the skin while the outer layer of Merino wool warms
- Inherently antibacterial
- Unisex
- Slim-fit
- Flat seams
- Round neckline
- Longer hem at back



NEW

### LYNX X SVALA MERINO LOUNGE PANTS

659146\_90 Black  
2XS, XS, S, M, L, XL, 2XL, 3XL

- Exclusive Lynx x Svala Co-branding collection style.
- Elastic and cosy Merino pants for leisure.
- 100% high-quality Merino wool knit.
- Unisex
- Slim-fit
- Side pockets
- Elastic waistband
- Flat seams



NEW

### LYNX X SVALA RACE BALACLAVA

665303\_90 Black  
2XS, XS, S, M, L, XL

- Exclusive Lynx x Svala Co-branding collection style.
- Shaped & wind-protective helmet
- Ideal for racing and active riding.
- Hood is windproof and breathable.
- Coolmax fabric breathes and transfers moisture away from the skin.
- Keeps its shape perfectly
- All seams are flat sewn for the comfort.



NEW

### LYNX X SVALA TUNDRA BALACLAVA

665302\_90 Black  
2XS, XS, S, M, L, XL

- Exclusive Lynx x Svala Co-branding collection style.
- The most protective hood in Windproof hood range, which allows you to get active even in the coldest conditions.
- Coolmax fabric on top of head breathes and transports moisture.
- Wind and waterproof double layer special knit with warm fleece on the inside, neck and throat.
- Longer collar part protects neck/chin well.
- All seams are flat sewn for comfortable to wear.



NEW

### LYNX X SVALA MERINO T-SHIRT

662099\_90 Black  
662099\_09 Grey  
2XS, XS, S, M, L, XL, 2XL, 3XL

- Exclusive Lynx x Svala Co-branding collection style.
- This Merino T-shirt wicks moisture from the skin while the outer layer of Merino wool warms and stores the heat generated by the body.
- Unisex
- Slim-fit
- Flat seams
- Fitted sleeves
- Round neckline
- Longer hem at back



NEW

### LYNX X SVALA HYBRID BALACLAVA

665304\_90 Black  
2XS, XS, S, M, L, XL

- Exclusive Lynx x Svala Co-branding collection style.
- Highly versatile Balaclava
- Ideal for winter use and variety of conditions and functions.
- Hinged hood effectively protects the face from the cold.
- Hood can be easily pull down out of the way, the head area folded back or pulled under the chin.
- The seam placement has been refined
- Constructed with combination of materials all in the name of comfort.



NEW

### LYNX X SVALA BASE BALACLAVA

665305\_90 Black  
2XS, XS, S, M, L, XL

- Exclusive Lynx x Svala Co-branding collection style.
- This shaped wind-protective helmet hood is ideal for snowmobiling, whenever you're going. The forehead, ears, chin, neck and neck are all protected with our special windproof fabric that is both breathable and moisture-wicking. Coolmax fabric is used around the head and forehead to allow the skin to breath and wick moisture away.
- Longer collar part protects neck/chin well.
- The balaclava keeps its shape and sits firmly in place without slipping down.



NEW

### LYNX X SVALA LIGHT MERINO T-SHIRT

662098\_90 Black  
662098\_09 Grey  
2XS, XS, S, M, L, XL, 2XL, 3XL

- Exclusive Lynx x Svala Co-branding collection style.
- This Merino and Tencel blend T-Shirt is perfect for a base layer in both cooler conditions and summer temperatures. It can be used as a work shirt for home chores or activities.
- Unisex
- Slim-fit
- Flat seams
- Fitted sleeves
- Round neckline
- Longer hem at back



NEW

### LYNX X SVALA MERINO SOCKS

667116\_90 Black  
S, M, L, XL

- Exclusive Lynx x Svala Co-branding collection style.
- Technical warm merino socks especially for colder conditions.
- Long elastic cuff keeps socks in place.
- The inner surface with comfortable merino terry keeps the feet dry and warm.
- Socks stay dry, odorless and fresh for longer.



NEW

### LYNX X SVALA MERINO ACTIVE SOCKS

667117\_90 Black  
S, M, L, XL

- Exclusive Lynx x Svala Co-branding collection style.
- For Active riding and varying conditions.
- The soft Merino knit keeps the feet dry and warm
- Socks stay odorless and fresh for longer.
- Elastic structure of cuff keeps socks in place
- Seamless foot prevents abrasion
- Calf length





NEW

### LYNX X SVALA POWERSTRETCH PRO BEANIE

665306\_90 Black

S, M, L

- Exclusive Lynx x Svala Co-branding collection style.
- The Power Stretch Pro hat will warm you up even when your activity levels are low.
- A warm and snug fit headwear made of high quality Polartec Power Stretch Pro. The inside is made of moisture-wicking fleece and the outside is lint-free polyester.
- Flat seams



NEW

### LYNX X SVALA MERINO BEANIE

665307\_90 Black

665307\_09 Grey

S, M, L

- Exclusive Lynx x Svala Co-branding collection style.
- The Merino hat is ideal for exercise as well as everyday use
- Double layer merino beanie for winter use.
- The knitted fabric has a double layer structure with an inner layer of polypropylene that efficiently wicks moisture from your skin and an external heat-binding layer of merino wool that has gone through SuperWash and anti-moth treatments.
- Flat seams



NEW

### LYNX X SVALA MERINO URBAN BEANIE

665308\_09 Grey

665308\_30 Red

S, M, L

- Exclusive Lynx x Svala Co-branding collection style.
- Extra fine Merino beanie, equally at home in the city, the forest or whatever the temperature or time of year.
- There is no prickliness or itching under this beanie there is no hair itching thanks to the natural properties of Merino wool.
- Fold over cuff

## RACING



### LYNX RACE SNOWCROSS JACKET

650129\_19 Blue Teal

650129\_06 Fire Red

XS, S, M, L, XL, 2XL

- High performing softshell jacket for racing. Water-repellent, windproof, flexible and optimally breathable material.
- Two Racing spirited color options.
- Waterproof zippers throughout
- Ventilation pockets at front and ventilation openings at back



### LYNX RACE SNOWCROSS PANTS

651133\_19 Blue Teal

651133\_06 Fire Red

XS, S, M, L, XL, 2XL

- High performing pants for racing.
- Water-repellent, windproof, flexible and optimally breathable fabric
- Reinforcement fabric at in-seam and high wear areas
- Higher back and lower front shape for optimal comfort
- Pre-shaped knees
- Extra grip stripes added to seating area
- D-rings at crotch and at waist



### LYNX WARM-UP JACKET

652020\_18 Mixed Color

Onesize

- Ultimate protection from freezing wind and cold weather.
- Improved style and fitting
- Removable hood and spacious pockets on both sides.
- 100% waterproof & windproof
- Thermaloft insulation



### LYNX RACING JERSEY LS

660035\_19 Blue Teal

660035\_06 Fire Red

XS, S, M, L, XL, 2XL, 3XL

- Lynx Racing Jersey long sleeve shirt will keep you comfortable and protected in Racing spirited activities.
- Comfortable, technical fabric
- Perfect riding fit
- Technical collar construction
- Mesh provides high ventilation
- Longer back for perfect coverage

## ACTIVE WEAR

**LYNX ACTIVE OPS**

650133\_77 Army Green  
650133\_09 Grey

XS, S, M, L, XL, 2XL, 3XL

- Extremely light multiuse riding suit which is workable in many outdoor activities, environments and conditions. You can modify the onepiece with unique bottom leg zip offs, adjustable to biking shorts!
- 100% waterproof & windproof, optimally breathable Sympatex material.
- Cordura reinforcement fabric on high wear areas; seat, inside leg and hem
- All seams sealed
- Waterproof YKK zippers
- Detachable bottom legs with zippers (can be adjusted to biking shorts)
- Preshaped knees and elbows
- Adjustable cuffs with velcro tab
- Front and back ventilation openings with mesh
- Thigh ventilation
- Reflective weldings
- Adjustable bottom legs & waist velcro system
- Stretch fabric panel at lower back to ease the movement

**NEW****LYNX ACTIVE JERSEY T-SHIRT**

660036\_30 Red  
660036\_80 Blue

XS, S, M, L, XL, 2XL, 3XL

- Lynx Active Jersey T-shirt will keep you comfortable and protected from the top of the mountain down to the trails and in different activities.
- Comfortable, technical fabric
- Perfect riding fit
- Technical collar construction
- Mesh provides high ventilation
- Longer back for perfect coverage

**NEW****LYNX ACTIVE JACKET**

650148\_90 Black  
650148\_09 Grey

XS, S, M, L, XL, 2XL, 3XL

- Lynx Active pants for all-purpose use, for example cycling, hiking and trail running.
- Long-lasting weather protection
- Waterproof & breathable
- Cycling specific fit
- Back and underarm ventilation with mesh inserts
- Hand pocket for easy access (jacket can be packed into pocket)

**NEW****LYNX ACTIVE JERSEY LS**

660032\_30 Red  
660032\_80 Blue

XS, S, M, L, XL, 2XL, 3XL

- Lynx Active Jersey long sleeve shirt will keep you comfortable and protected from the top of the mountain down to the trails and in different activities
- Comfortable, technical fabric keeps you dry and prevents from overheating.
- Comfortable, technical fabric
- Perfect riding fit
- Technical collar construction
- Mesh provides high ventilation
- Longer back for perfect coverage

**NEW****LYNX ACTIVE PANTS**

651136\_90 Black  
651136\_09 Grey

XS, S, M, L, XL, 2XL, 3XL

- Lynx Active pants for all-purpose use, for example cycling, hiking and trail running.
- Dirt and water-repellent, breathable
- Stretch softshell fabric with elastic panels
- Pre-shaped fit for optimal ride comfort and use with knee pads
- Tapered fitting
- Zipped pockets & full length side zippers to be used for ventilation also

**NEW****LYNX ACTIVE CAP**

665287\_09 Grey  
665287\_12 Orange

Onesize

- Light weight cap for off-season activities.



## HANDWEAR



NEW

### LYNX ACTIVE GLOVES

660047\_94 Black with Graphics  
S, M, L, XL, 2XL, 3XL

- A lightweight glove without insulation for warm weather riding or for hand protection during short stops.
- Perfect for off-season activities as well.



### LYNX QUANTUM 2.0 GLOVES STX

666044\_90 Black  
XS, S, M, L, XL, 2XL

- Sympatex insert with 100% waterproof, windproof and breathability.
- Full leather fingers and palm for perfect fit and feel.
- 2 layer Shell fabric with Sympatex insert.
- Thinsulate (40g) insulation.
- Micro Active lining.
- Full leather fingers.
- Powder Cuff, Wristband, Stopper system.
- Pull and penetrate loop.



### LYNX QUANTUM LITE GLOVES

666041\_90 Black  
XS, S, M, L, XL, 2XL, 3XL

- Gloves for high-activity riding in warm conditions.
- Lightweight, windproof warmth, and ultimate breathability.
- Genuine Goat leather palm with grip reinforcement.
- Waterguard membrane.
- Adjustable Velcro tab at wrist.



### LYNX STAMINA 2.0 GLOVES

666045\_90 Black  
XS, S, M, L, XL, 2XL, 3XL

- Waterproof and breathable gloves with durable shell material.
- Warm Primaloft insulation.
- Pre-curved shape for optimal fit.
- Long, adjustable gauntlet.
- Hanging loops.



### LYNX STAMINA MITTEN

666042\_90 Black  
XS, S, M, L, XL, 2XL

- Leather palm with grip reinforcement.
- Waterproof, windproof and breathable glove insert.
- Antibacterial, stay-dry moisture management lining.
- Down-insulated on back of hand for superior warmth.



### LYNX SQUADRON NYLON GLOVES

666046\_90 Black  
XS, S, M, L, XL, 2XL, 3XL

- Waterproof, windproof and breathable glove insert
- Naturally moisture-wicking and antimicrobial wool blend lining
- Box fingertips to avoid air infiltration
- Grip control technology for a better grip in palm
- Touch screen index finger
- Visor wiper
- Top hand: 200 g PrimaLoft® Gold  
Palm: 133 g PrimaLoft® grip control.

## SPORTSWEAR FLEECE



NEW

**LYNX WARM FLEECE JACKET**

659140\_16 Dark Navy

S, M, L, XL, 2XL, 3XL

- Retro design and great durability
- Hand warming pockets
- Chest pocket
- Integrated hand gaiters
- Protective collar



NEW

**LYNX WARM FLEECE JACKET W**

659141\_16 Dark Navy

XS, S, M, L, XL, 2XL

- Retro design and great durability
- Hand warming pockets & chest pocket
- Integrated hand gaiters
- Protective collar



NEW

**LYNX RE FLEECE JACKET**

659142\_90 Black

659142\_07 Charcoal Grey

XS, S, M, L, XL, 2XL, 3XL

- Moisture-wicking fabric.
- 2 zippered hand pockets.
- Large sponsors' logo prints on sleeves and shoulders.

**LYNX LOGO FLEECE JACKET**

659111\_90 Black

659111\_30 Red

XS, S, M, L, XL, 2XL, 3XL

- Mid weight microfleece excellent for warmth as a second layer.
- Moisture-wicking fabric.
- 2 zippered hand pockets.

**LYNX LOGO FLEECE JACKET W**

659112\_09 Grey

659112\_30 Red

XS, S, M, L, XL, 2XL

- Mid weight microfleece excellent for warmth as a second layer.
- Moisture-wicking fabric.
- 2 zippered hand pockets.



## SIGNATURE COLLECTION



NEW

### LYNX SIGNATURE ZIP HOODIE

659127\_90 Black  
659127\_07 Charcoal Grey  
659127\_27 Heather Grey  
XS, S, M, L, XL, 2XL, 3XL

- Heavy weight fleece for maximum warmth.
- Printed logos.
- 2 Hip pockets.
- Thumb hole.
- Sizes XS-3XL



NEW

### LYNX SIGNATURE ZIP HOODIE W

659128\_27 Heather Grey  
659128\_07 Charcoal Grey  
659128\_29 Heather Charcoal  
XS, S, M, L, XL, 2XL

- Heavy weight fleece for maximum warmth.
- Printed logos.
- 2 Hip pockets.
- Thumb hole.



NEW

### LYNX SIGNATURE LS SHIRT W

660037\_90 Black  
660037\_29 Heather Charcoal  
XS, S, M, L, XL, 2XL

- Crew neck long sleeves T-Shirt



NEW

### LYNX SIGNATURE LS SHIRT

660038\_90 Black  
660038\_29 Heather Charcoal  
XS, S, M, L, XL, 2XL, 3XL

- Crew neck long sleeves T-Shirt



NEW

### LYNX SIGNATURE T-SHIRT

662094\_90 Black  
662094\_30 Red  
XS, S, M, L, XL, 2XL, 3XL



NEW

### LYNX SIGNATURE KNIT

660039\_90 Black  
S, M, L, XL, 2XL, 3XL

- Lynx heritage spirited knit for casual days.
- Sweater made of 60% cotton and 40% acrylic materials.
- Round neckline
- Rib hem and cuffs
- Lynx heritage patch on chest

NEW

### LYNX SIGNATURE PLAID SHIRT

660033\_30 Red  
S, M, L, XL, 2XL, 3XL

- Warm and comfortable Flannel shirt for casual days
- 4-hole plastic side engraved button.
- Corduroy inside stand collar.

## HOODIES & T-SHIRTS



NEW

### "LIMITED EDITION" LYNX RIDER HOODIE

659130\_90 Black  
XS, S, M, L, XL, 2XL, 3XL  
• Kangaroo pocket



NEW

### "LIMITED EDITION" LYNX RIDER T-SHIRT

662095\_90 Black  
XS, S, M, L, XL, 2XL, 3XL



NEW

### "LIMITED EDITION" LYNX BEAST T-SHIRT

662097\_90 Black  
XS, S, M, L, XL, 2XL, 3XL



NEW

### LYNX RE ZIP HOODIE

659131\_90 Black  
659131\_06 Fire Red  
XS, S, M, L, XL, 2XL, 3XL  
• Heavy weight fleece for maximum warmth.  
• Printed logos.  
• 2 Hip pockets.  
• Thumb hole.



NEW

### LYNX RE T-SHIRT

662096\_90 Black  
XS, S, M, L, XL, 2XL, 3XL



### LYNX RE T-SHIRT

662091\_90 Black  
XS, S, M, L, XL, 2XL, 3XL



### LYNX LOGO T-SHIRT

662092\_90 Black  
662092\_06 Fire Red  
XS, S, M, L, XL, 2XL, 3XL  
T-shirt with Lynx origin/Roots print.



### LYNX LOGO T-SHIRT W

662093\_90 Black  
662093\_06 Fire Red  
XS, S, M, L, XL, 2XL  
T-shirt with Lynx origin/Roots print.



### LYNX SQUADRON T-SHIRT

662089\_09 Grey  
X, S, M, L, XL, 2XL  
Trendy T-shirt with Lynx slogan and ladies fit.



### LYNX SQUADRON HOODIE W

659105\_09 Grey  
X, S, M, L, XL, 2XL  
Lynx hoodie with kangaroo pocket and ladies fit.



### LYNX LOGO ZIP HOODIE

659103\_09 Grey  
X, S, M, L, XL, 2XL  
Hoodie with visible Lynx design and ladies fit.



## HEADWEAR



NEW

### LYNX REVERSIBLE BEANIE

- 665300\_14 Autumn Red  
 665300\_90 Black  
 665300\_83 Royal Blue  
 665291\_90 Black  
 665291\_07 Charcoal Grey  
 665291\_06 Fire Red  
 Onesize  
 • 2 in 1 reversible beanie.  
 • Knit in Lynx logos.



NEW

### "LIMITED EDITION" LYNX RIDER CAP

- 665298\_90 Black  
 Onesize  
 • Trendy Cap with Lynx limited edition graphics.



NEW

### LYNX STAMINA FUR HAT

- 665295\_90 Black  
 S/M, L/XL  
 • Insulated hat for optimized warmth.  
 • 4 way stretch softshell.  
 • Lined with frosted fake fur.



NEW

### LYNX SIGNATURE BEANIE

- 665301\_90 Black  
 665301\_13 Coral  
 665301\_27 Heather Grey  
 Onesize  
 • Lifestyle hat with Pom-Pom and woven Lynx logo.  
 • Knitted hat with micro fleece lining.



NEW

### LYNX RE CAP

- 665296\_90 Black  
 665296\_06 Fire Red  
 Onesize



### LYNX FUR HAT

- 665278\_90 Black  
 L/XL



NEW

### LYNX URBAN BEANIE

- 665299\_90 Black  
 665299\_27 Heather Grey  
 665299\_74 Teal  
 665299\_28 Whiskey  
 Onesize  
 • Lifestyle beanie with the Lynx Cypher logo.  
 • Foldover cuff.



NEW

### LYNX SIGNATURE CAP

- 665297\_90 Black  
 665297\_30 Red  
 Onesize



### LYNX TECH THIN BEANIE

- 665285\_39 Raspberry  
 Onesize  
 • Light technical fleece beanie.  
 • 100% stretch polyester

### LYNX BASIC BALACLAVA

- 665104\_90 Black  
 Onesize  
 • Antibacterial material with Anti-itching seams  
 • 91% Polyester, 9% Spandex, brushed inner layer.

## FOOTWEAR



### TEC+ BOOTS

444253\_90 Black

5, 6, 7, 8, 9, 10, 11, 12, 13

- Tec + Boots with moisture-wicking inner liner material.
- Improved comfort and flex
- Removable insole.
- Unisex, smaller sizes added for ladies.
- Kevlar reinforced laces.
- 600 g PrimaLoft ECO FOOTWEAR insulation for maximum comfort.
- Leather outer layer incorporates HydroGuard+ waterproof membrane.
- Tapered rear shape for better achilles and ankle support.
- Abrasion and impact resistant ice breaker toe piece.
- Aggressive, durable anti-slip outsole for running board traction.



### TEC+ REC BOOTS

444240\_90 Black

5, 6, 7, 8, 9, 10, 11, 12, 13

- Tec + Rec Boots with Tough abrasion resistant leather outer.
- Breathable waterproof membrane.
- Limit of comfort temperature range: -40°C to -50°C\*.
- Rugged ultra-grip outsole design.
- Removable/inner liner.



### LADIES' TEC+ REC BOOTS

444241\_90 Black

6, 7, 8, 9, 10

- Ladies' Tec + Rec boots with Tough abrasion resistant leather outer.
- Breathable waterproof membrane.
- Limit of comfort temperature range: -40°C to -50°C\*.
- Rugged ultra-grip outsole design.
- Removable/inner liner.

## SOCKS



### LYNX COMPRESSION SOCKS

667011\_94 Black with Graphics

S, M, L, XL

- Merino blend.



### LYNX THERMAL SOCKS

667012\_94 Black with Graphics

S, M, L, XL

- Merino blend.



## BACKCOUNTRY ACCESS



NEW

### LYNX BCA DOZER 2H-S SHOVEL WITH SAW

669170\_33 Brick Red

Onesize

The BCA Dozer 2H-S shovel is the granddaddy of the shovel line, with hoe mode to provide added efficiency.

Sled-specific extendable shovel with, stowablesaw in handle, hoe-mode and extendable saw mode.

Replaces D-2 shovel with:

- + Extended saw handle mode
- + Use shovel in hoe mode and saw together
- + 150% saw cutting speed



NEW

### LYNX BCA FLOAT 25 TURBO AIRBAG

669171\_07 Charcoal Grey

Onesize

NEW COLOR!

If you are a backcountry snowmobiler, this BCA Float 25 Turbo Avalanche Airbag 2.0 pack is for you. The avalanche airbag is designed for backcountry riding. Creating buoyancy and helping you float to the surface during the avalanche. All BCA Float packs include integration for BC Link™ Radios, hydration sleeve, dual-zippered shoulder straps, and molded back panel.



### LYNX BCA FLOAT 2.0 CYLINDER PI

669131\_80 Blue

Onesize

- Refillable air cylinder to BCA Float 25 Turbo Backpack.



### BCA TRACKER 4 TRANSCEIVER

669161\_90 Black

Onesize

- TRACKER4™ Upholding the Tracker tradition.
- Rubberized overmolded case, larger LED display, and the same tracker interface that basically makes it impossible not to find your companion.
- Signal suppression and Big Picture modes for no-nonsense multiple victim searching.
- Motion-sensing auto revert-to-transmit mode.
- Upgradable software and electronics performance testing for fleet management.
- Weight: 7.6 oz / 215 g including batteries, not harness.
- Dimensions: 4.7" x 3.0" x 1.0" / 12 cm x 7.5 cm x 2.6 cm.
- Frequency: 457 kHz.
- Includes three AAA alkaline batteries & harness
- 5 years limited warranty



### LYNX BCA STEALTH 270 PROBE

669134\_12 Orange

Onesize

- Lynx BCA probe features depthmarkings that are easy to see when you're performing a rescue or logging a snow profile.



### LYNX BC LINK 2.0 EU

669157\_90 Black

Onesize

- The BC Link™ Two-Way Radio 2.0 is our next generation radio with 2 Watts of power for increased usable range. Smart Mic grill is impervious to packing with snow. On/off/channel selection dial switch is protected from inadvertent channel changing.
- Comes with long-lasting built-in rechargeable lithium-ion battery, durable cord/base unit, and new battery percentage power display.
- Integrates into all Float avalanche airbag and Stash backpacks.
- Find separated friends, communicate plans, stick your line, and share observations in real-time with the BC Link group communication system.
- The Smart Mic user interface is located at your fingertips: to change settings, no need to dig the radio from your pack.
- Long battery life even in cold temperatures
- Link 2.0 improves on our current system, with more power, more durability, and more weather resistance.

## BAGS

**LYNX BCA STASH 30 BACKPACK**

669154\_90 Black

669154\_35 Burgundy

Onesize

- Lynx BCA Stash backpack is technical and rugged.
- Stash backpack includes freeze proof Stash hydration sleeve and is compatible with BC Link™ group communication system 210 denier ripf-stop nylon / 420 denier oxford nylon

**LYNX ROLLER GEAR BAG BY OGIO**

668116\_90 Black

Onesize

- Top zippered wet/dry pocket
- Large main compartment with easy access opening to all gear
- Large end boot pocket
- Fold out changing mat
- Telescoping pull handle
- Heavy duty SKID chassis with easy glide wheels
- Lynx and Ogio branded
- 31.5"l x 16"w x 18"d
- 139 L
- 4.4 Kg
- 900D with eco friendly PVC backing

**LYNX DUFFLE BACKPACK BY OGIO**

668119\_90 Black

Onesize

- Large main compartment with U-shaped zipper for easy access
- Shoulder harness with built in grab handles
- Mesh water bottle holder
- Dimensions:  
62cm L x 29cm W x 26cm D  
45L Capacity, 0.82kg  
600D Poly x 420D Poly





## KIDSWEAR



### LYNX SQUADRON KIDS OPS

657007\_77 Army Green

4, 6, 8, 10

- Lynx Squadron Kids OPS is developed together with kids.
- Thermal loft insulation is a perfect choice for riding and playing in the snow
- RPM Max Shell for moisture management
- All seams sealed
- Front closure and pockets with waterproof YKK zippers
- Adjustable waist



### LYNX JUNIOR BOOTS

667111\_90 Black

1, 2, 3, 4, 5, 6

- Unisex boots
- Waterproof
- Rubber outline
- 6mm thick removable liner
- Height: 12" (30.5 cm)
- Comfort-rated to -61°F (-52 °C)



NEW

### LYNX SIGNATURE JUNIOR HOODIE

661016\_36 Pink

661016\_83 Royal Blue

5-6, 7-8, 10-12, 14-16

- Heavy weight fleece for maximum warmth.



### LYNX LOGO FLEECE JACKET JUNIOR

661015\_90 Black

661015\_30 Red

5-6, 7-8, 10-12, 14-16

- Mid weight microfleece excellent for warmth as a second layer.
- Moisture-wicking fabric.



NEW

### LYNX KIDS BEANIE

665293\_90 Black

665293\_27 Heather Grey

Onesize

- Knitted hat with micro fleece lining.



### LYNX LOGO T-SHIRT JUNIOR

663003\_90 Black

663003\_06 Fire Red

5-6, 7-8, 10-12, 14-16

T-shirt with Lynx origin/Roots print.



### LYNX SQUADRON MITTEN KIDS

666043\_90 Black

6-8, 10-12, 14-16

- Waterproof and breathable membrane.
- Drawstring closure.
- Adjustable hook and loop web strap with slip keep.
- Micropolyester lining with Microban anti-microbial product protection.
- Heat pack pocket built into inner mitt lining.
- Shell: Nylon, Polyurethane, Stretch Polyester
- Insulation: Top hand: 240 g Thermal Loft
- Palm: 140 g Thermal Loft

# HOW TO MEASURE

95

**HEIGHT:** without shoes, standing with heels and back against a wall.

**HEAD:** around your head, from the center of the forehead, above the ears and over the natural bump at the back of the head.

**ARM LENGTH:** let the hands hang down on the side in a slightly bent position. Measure from the center of the back of your neck, along the length of your arm, to the wrist.

**CHEST:** measure under your arm, around the fullest part of your chest.

**WAIST:** immediately below the lowest rib.

**HIPS:** across the fullest part of the seat.

**INSEAM:** without shoes, from crotch to the floor.

**GLOVES:** Measure palm width.

**BOOTS:** Foot length from heel to toe.

- For best results, have someone else take measurements.
- Measure body in underwear.
- Tape must be snug but not tight.
- If measurements fall between two sizes, order the larger size.

## SIZING CHART

### MEN'S

	XXS	XS	S	M	L	XL	2XL	3XL	4XL	5XL
Chest	84 - 89	89 - 94	94 - 102	102 - 112	112 - 122	122 - 132	132 - 142	142 - 150	150 - 160	
Waist	69 - 74	74 - 79	79 - 86	86 - 97	97 - 107	107 - 117	117 - 127	127 - 135	135 - 158	
Hips (Seat)	84 - 89	89 - 94	94 - 102	102 - 112	112 - 122	122 - 132	132 - 142	142 - 150	150 - 173	
Arm Length	76 - 79	79 - 81	81 - 84	84 - 86	86 - 89	89	89 - 91	91		
Inseam	79 - 81	81	81	81	81	81	81 - 83	83 - 84	84	

### LADIES'

	XXS	XS	S	M	L	XL	2XL	3XL
Chest	81 - 86	86 - 91	91 - 97	97 - 107	107 - 114	114 - 124	124 - 134	
Waist	61 - 66	66 - 71	71 - 76	76 - 86	86 - 94	94 - 104	104 - 114	
Hips (Seat)	86 - 91	91 - 97	97 - 102	102 - 112	112 - 119	119 - 132	132 - 140	
Arm Length	79	79 - 81	81	81 - 84	84	84 - 86	86	
Inseam	76	76	76	76	76	76	76	

### KIDS & TEEN

	2	3	4	5	6	7	8	10	12	14	16
Height	0.92	1	1	1.16	1.24	1.28	1.37	1.46	1.56	1.58	1.68
Chest	53	56	58	61	64	66	69	72	76	80	84
Waist	51	52	53	55	56	57	58	61	64	66	69
Hips (Seat)	53	56	58	61	64	66	69	72	76	80	84
Arm Length	39	43	47	51	55	58	62	72	76	80	84
Inseam	34	39	44	50	53	58	62	67	71	75	79

### HELMETS

	XS	S	M	L	XL	2XL	3XL
<b>Men &amp; Ladies</b>							
Hat Size	6 <sup>5</sup> / <sub>8</sub> - 6 <sup>3</sup> / <sub>4</sub>	6 <sup>7</sup> / <sub>8</sub> - 7	7 <sup>1</sup> / <sub>8</sub> - 7 <sup>1</sup> / <sub>4</sub>	7 <sup>3</sup> / <sub>8</sub> - 7 <sup>1</sup> / <sub>2</sub>	7 <sup>5</sup> / <sub>8</sub> - 7 <sup>3</sup> / <sub>4</sub>	7 <sup>7</sup> / <sub>8</sub> - 8	8 <sup>1</sup> / <sub>8</sub> - 8 <sup>1</sup> / <sub>4</sub>
Head (cm)	53 - 54	55 - 56	57 - 58	59 - 60	61 - 62	63 - 64	65 - 66
<b>Junior</b>		49 - 50	51 - 52	53 - 54			

### GLOVES Measure Palm Width

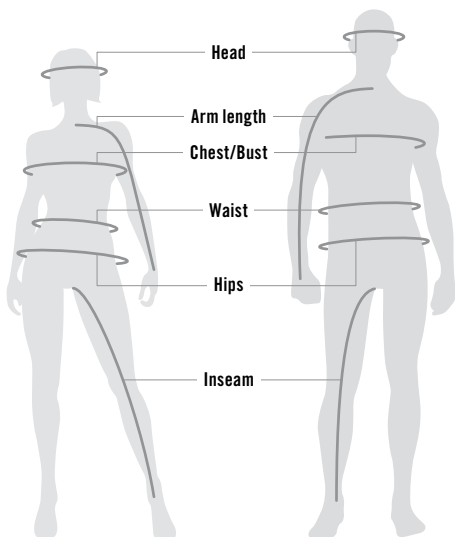
	XS	S	M	L	XL	2XL	3XL
<b>Men</b>							
cm	7 <sup>1</sup> / <sub>2</sub>	8	9	10	11 <sup>1</sup> / <sub>2</sub>	13	14
<b>Ladies</b>							
cm	6	7	8	9	10	11 <sup>1</sup> / <sub>2</sub>	-

### SOCKS

Men		Ladies		Kids	
M	L	S	M	S/M	L/XL
6-9 <sup>1</sup> / <sub>2</sub>	10-13	4-8	8 <sup>1</sup> / <sub>2</sub> -12	9 <sup>1</sup> / <sub>2</sub> -12 <sup>1</sup> / <sub>2</sub>	13-3

## BOOTS

	Men									Ladies					Kids					
	5	6	7	8	9	10	11	12	13	6	7	8	9	10	1	2	3	4	5	6
EU-Unisex Shoes Size	37	38	39.5	41	42	43	44.5	46	47	35.5	37	38	39.5	41	32	33	34	35.5	37	38
Foot (cm)	23	24	24.5	25.5	26.5	27	28	29	29.5	22	23	24	24.5	25.5	19.5	20.5	21.5	22	23	24



## WHAT CODE REPRESENTS YOUR SIZE?

- 1 Find your size.
- 2 The corresponding code is  
THE CODE you use to complete the part number on your order.  
Example: 440 227 \_\_\_\_\_ 90  
Size: M = code "06", Therefore  
440 227 **06** 90

SIZE	CODE	SIZE	CODE	SIZE	CODE
One Size	00	1	20	13	33
XXS	01	2	21	14	34
XS	02	3	22	16	35
S	04	4	23	3-4	79
M	06	5	24	5-6	52
L	09	6	25	6-8	48
XL	12	7	27	7-8	54
2XL	14	8	28	10-12	49
3XL	16	9	29	14-16	50
4XL	18	10	30	S/M	72
		11	31	M/L	91
		12	32	L/XL	73



EXPLORE AN ENTIRE WORLD OF ADVENTURE WITH ALL OF OUR BRP PRODUCTS. **BRP.COM**



***ski-doo LYNX SEA-DOO can-am ROTAX ALUMACraft Manitou EVINRUDE***

---