

正鶴工業股份有限公司

Standard Motor Corporation

CGV 500

SPARE PARTS

LIST

10 FL 65 SUNG CHIANG RD, TAIPEI TAIWAN

TEL:886-2-25066277 FAX:886-2-25071915

序 言

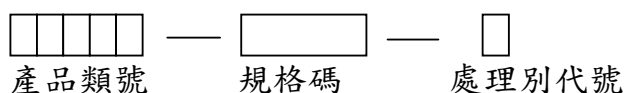
本零件手冊僅適用於本公司 CGV系列的機種,當您要訂購此機種之零件時,請參考這本手冊,並正確的引用零件號碼和零件名稱。

- 一、在本零件手冊發行後,若有修改、增訂或價格調整時,將會另行通知,當您接到變更通知時,請您務必按照變更通知更正您手中的零件手冊,以隨時保持準確度。
- 二、顏色與型式會隨著運用逐漸增加,增加之顏色、型式僅列舉在"差異表"內,當您要訂購這些零件時,請參考零件手冊中之零件號碼和零件名稱並參考"差異表"選擇您所需要的顏色、型式後,寫出正確完整的零件號碼與零件名稱並加註備註欄內容。
- 三、細小之另件以本公司之最小販賣單位為購買單位(價格另以單位價計)
- 四、零件號碼

<A>一般零件組



標準品

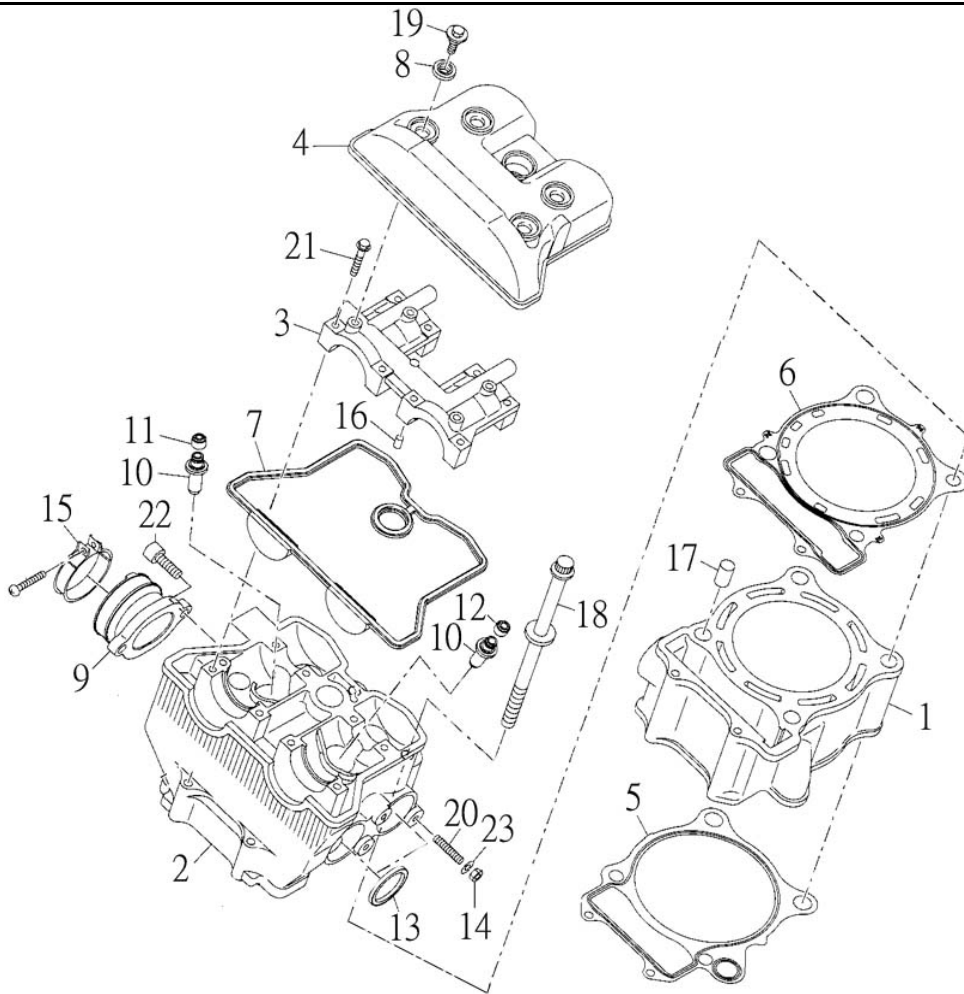


C O N T E N T

目 錄

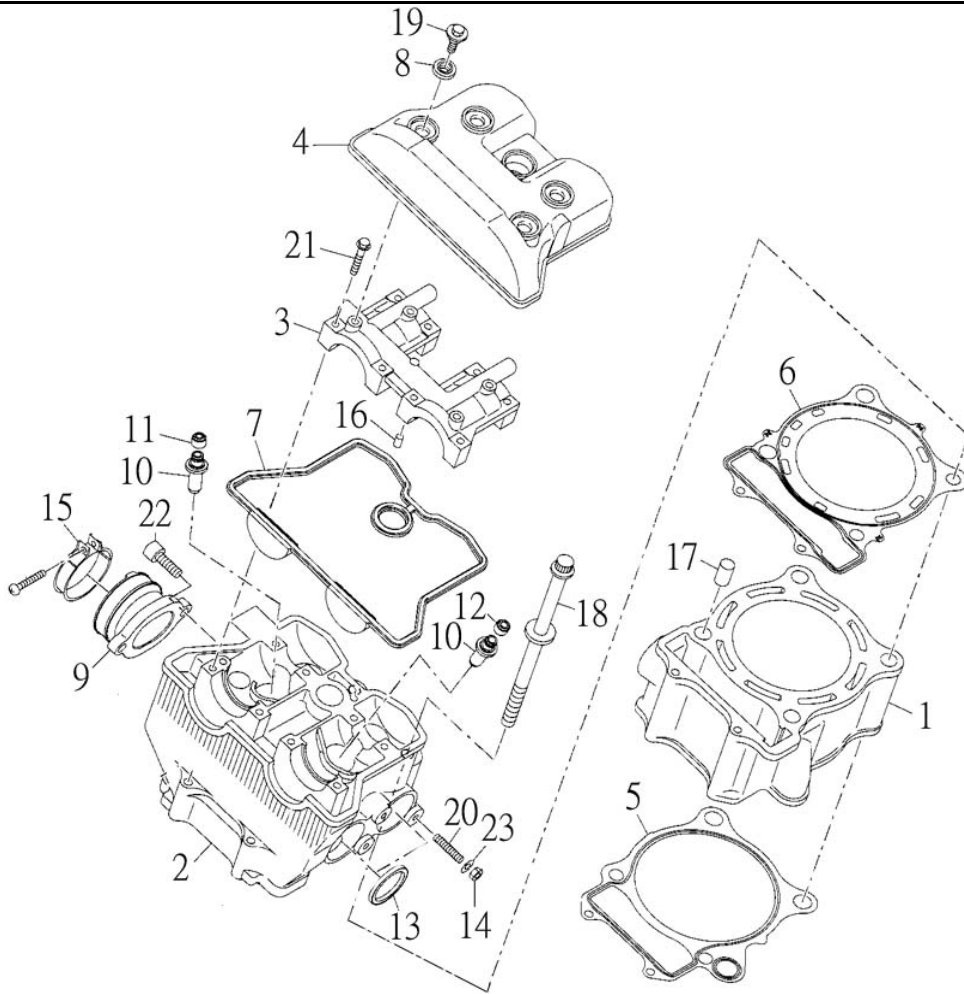
- 一． CYLINDER 汽缸
- 二． CYLINDER CRANKSHAFT, PISTON 曲軸、活塞
- 三． WATER PUMP 水泵
- 四． OIL PUMP 機油泵
- 五． CARBURETOR 化油器
- 六． CAMSHAFT, VALVE 凸輪軸,閥門
- 七． CRANKCASE 曲軸箱
- 八． LEFT CRANKCASE COVER 左曲軸箱蓋
- 九． RIGHT CRANKCASE COVER 右曲軸箱蓋
- 十． OIL FILTER 機油過濾器
- 十一． TRANSMISSION, STARTER 傳動系統
- 十二． TRANSMISSION, STARTER 傳動系統
- 十三． GENERATOR 發電機
- 十四． INTAKE 空氣吸入口
- 十五． EXHAUST MUFFLER 排氣管
- 十六． REAR ARM 擺動臂
- 十七． REAR SUSPENSION 後懸吊系統
- 十八． FRAME 車架
- 十九． GUARD 保護桿
- 二十． STEERING 轉向裝置
- 二十一． FRONT SUSPENSION 前懸吊系統
- 二十二． FRONT WHEEL 前輪
- 二十三． HUB, REAR 後輪轂
- 二十四． REAR WHEEL 後輪
- 二十五． FUEL TANK 油箱
- 二十六． OIL TANK 機油箱
- 二十七． WATER-COOLING SYSTEM 水冷卻系統
- 二十八． REAR BRAKE 後煞車系統
- 二十九． KNUCKLE, STEERING 轉向關節座
- 三十． STEERING HANDLE CABLE 轉向把手，鋼索
- 三十一． FRONT FENDER 前土除
- 三十二． SEAT 座墊
- 三十三． PEDAL BUMPER 踏板保護架
- 三十四． STAND FOOTREST 腳踏桿
- 三十五． HEADLIGHT 前燈
- 三十六． FLASHER 方向燈
- 三十七． SPEEDOMETER 速度表
- 三十八． TAIL LIGHT 後燈
- 三十九． WIRE HARNESS 主電路配線
- 四十． REVERSE RELEASE SWITCH 倒檔釋放鈕
- 四十一． HANDLE SWITCH, LEVER 把手開關、拉桿

一、CYLINDER 汽缸



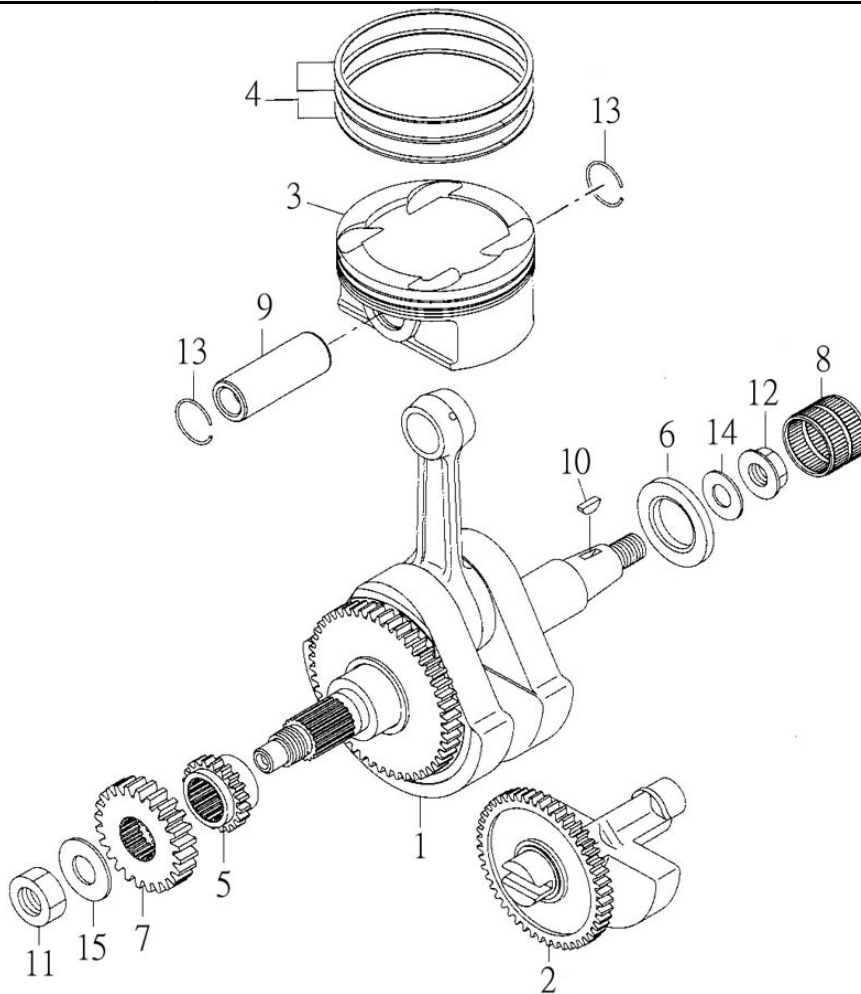
NO.	PARTS NO.	PARTS NAME		QTY	NOTE
項目	零件號碼	零件名稱		用量	備註
1	11111-CGV-00	CYLINDER	汽缸	1	
2	11121-CGV-00	HEAD COMP, CYLINDER	汽缸頭	1	
3	11131-CGV-00	HOLDER, WASHER	凸輪軸固定座	1	
4	11141-CGV-00	COVER, CYLINDER HEAD	汽缸頭蓋	1	
5	11151-CGV-00	GASKET, CYLINDER	汽缸墊片	1	
6	11181-CGV-00	GASKET, CYLINDER HEAD	汽缸頭墊片	1	
7	11191-CGV-00	GASKET, HEAD COVER	汽缸頭蓋墊圈	1	
8	11196-CGV-00	RUBBER MOUNT	頭蓋油封	4	
9	13555-CGV-00	ADAPTER COMP.	進氣歧管	1	
10	14716-CGV-00	GUIDE VALVE	氣門導管	4	
11	14731-CGV-00	SEAL-INTAKE VALVE	進氣閥門徑封	2	黑
12	14736-CGV-00	SEAL-VALVE	排氣閥門徑封	2	綠
13	31613-CGV-00	GASKET Ø32.5*Ø40*3.2t	排氣管墊片	2	
14	31622-CGV-00	NUT 8*12.5*5.86	排氣管螺帽	4	銅
15	90260-105061-C	BAND A'SSY 10.5*Ø60.6	進氣歧管夾	1	
16	94410-08010	STRAIGHT PIN Ø6.3*Ø8*10L	定位銷	2	
17	94410-14718	PIN, DOWEL Ø13*Ø14.7*18L	定位銷	2	
18	94610-11198-B	BOLT	缸頭螺栓	4	
19	94706-06022-B	BOLT M6*14/21.5	頭蓋螺栓	4	
20	94717-08030-B	BOLT, STUD	雙頭螺栓	4	
21	96411-06040-B	BOLT, FLANGE	凸緣螺栓	8	
22	96510-08020-B	BOLT, SOCKET	六角承窩螺栓	2	

一、CYLINDER 汽缸



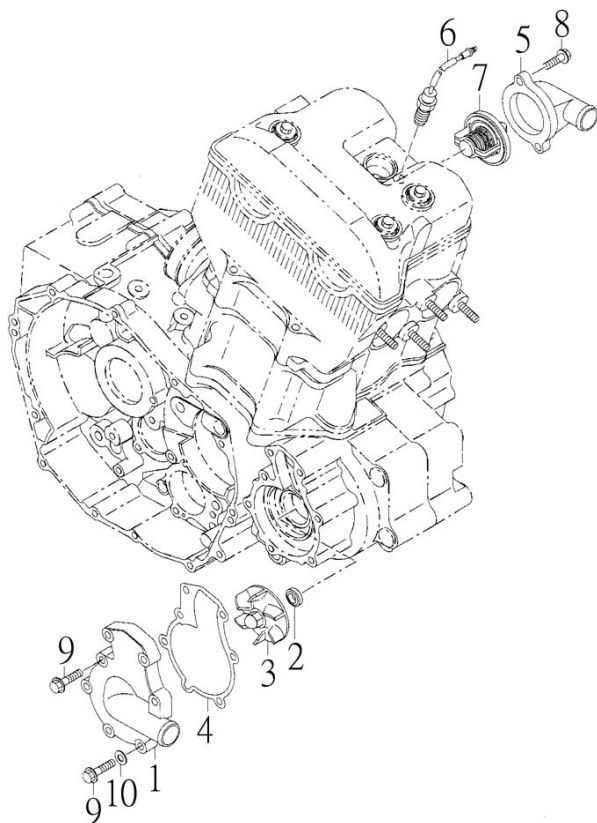
NO.	PARTS NO.	PARTS NAME	QTY	NOTE
項目	零件號碼	零件名稱	用量	備註
23	97301-081522-B	SPRING WASHER 8.5*15*22	4	彈簧墊圈

二、CYLINDER CRANKSHAFT, PISTON 曲軸、活塞



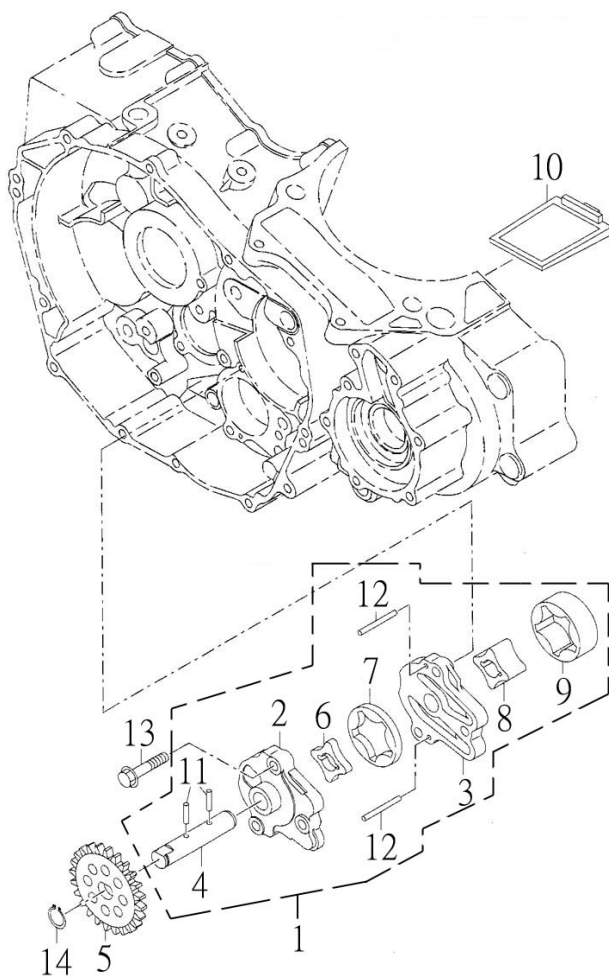
NO.	PARTS NO.	PARTS NAME	Q'TY	NOTE
項目	零件號碼	零件名稱	用量	備註
1	11400-CGV-00	CRANKSHAFT COMP	1	曲軸總成
2	11500-CGV-00	BALANCER SHAFT COMP. 47T	1	平衡軸總成
3	11631-CGV-00	PISTON SET (STD)	1	活塞
4	11636-CGV-00	RING SET, PISTON (STD)	1	活塞環組
5	14311-CGV-00	CRANK SPROCKET 21T	1	正時鏈輪
6	23632-CGV-00	SPACER Ø30.7*Ø55*8.5t	1	起動輪隔管
7	25641-CGV-00	PRIMARY GEAR 25T	1	第一驅動齒輪
8	93310-303526Z	NEEDLE BEARING K30*35*26ZW	1	滾針軸承
9	93510-122362	PIN, PISTON Ø12*Ø23*61.5L	1	活塞銷
10	94420-04013	KEY, WOODRUFF 4*13	1	半圓鍵
11	95201-182709-C	NUT, HEXAGON	1	六角螺帽
12	95401-141912-B	NUT, FLANGE	1	凸緣螺帽
13	97050-14026	CIRCLIP, PISTON PIN Ø1.4*Ø25.6	2	活塞銷止動環
14	97201-143043-B	WASHER, PLATE Ø14.5*Ø30*4.3	1	平面墊圈
15	97201-193330-B	WASHER, PLATE Ø19.2*Ø32.9*3t	1	平面墊圈

三、WATER PUMP 水泵



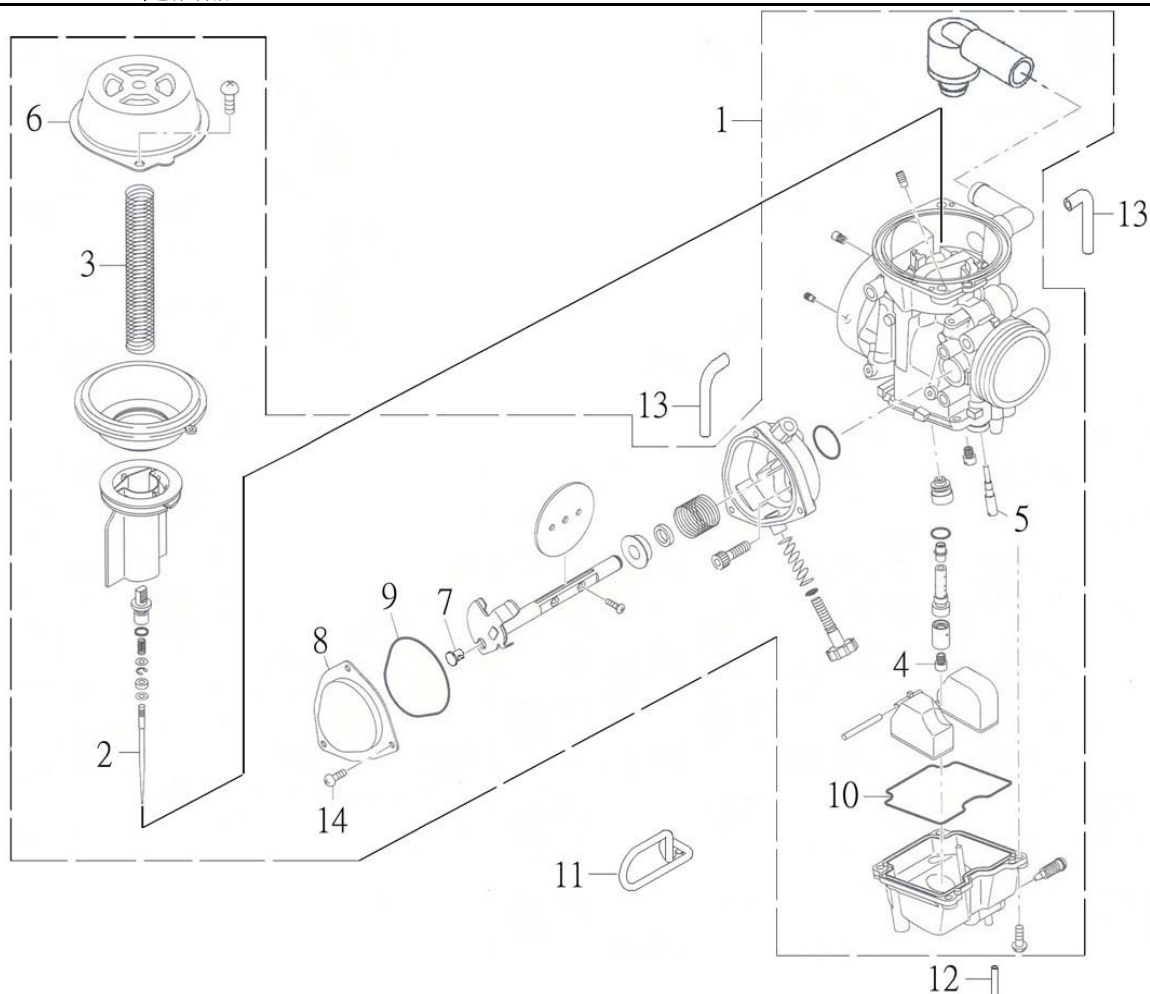
NO.	PARTS NO.	PARTS NAME		Q'TY	NOTE
項目	零件號碼	零件名稱		用量	備註
1	13012-CGV-00	WATER PUMP COVER	水泵蓋	1	
2	13023-CGV-00	WATER SEAL B	水封B	1	
3	13024-CGV-00	FAN	水泵葉輪	1	
4	13051-CGV-00	WASHER, PUMP COVER	水泵蓋墊片	1	
5	62732-CGV-00	THERMOSTAT COVER	節溫器蓋	1	
6	62740-CGV-00	THERMO SENSOR (110 DEG)	溫度感測器	1	
7	62745-CGV-00	THERMOSTAT 71°C	節溫器	1	
8	96411-06020-B	BOLT, FLANGE	凸緣螺栓	2	
9	96411-06025-B	BOLT, FLANGE	凸緣螺栓	7	
10	97230-061310	WASHER, COPPER 6.1*13*1	銅墊圈	1	

四、OIL PUMP 機油泵



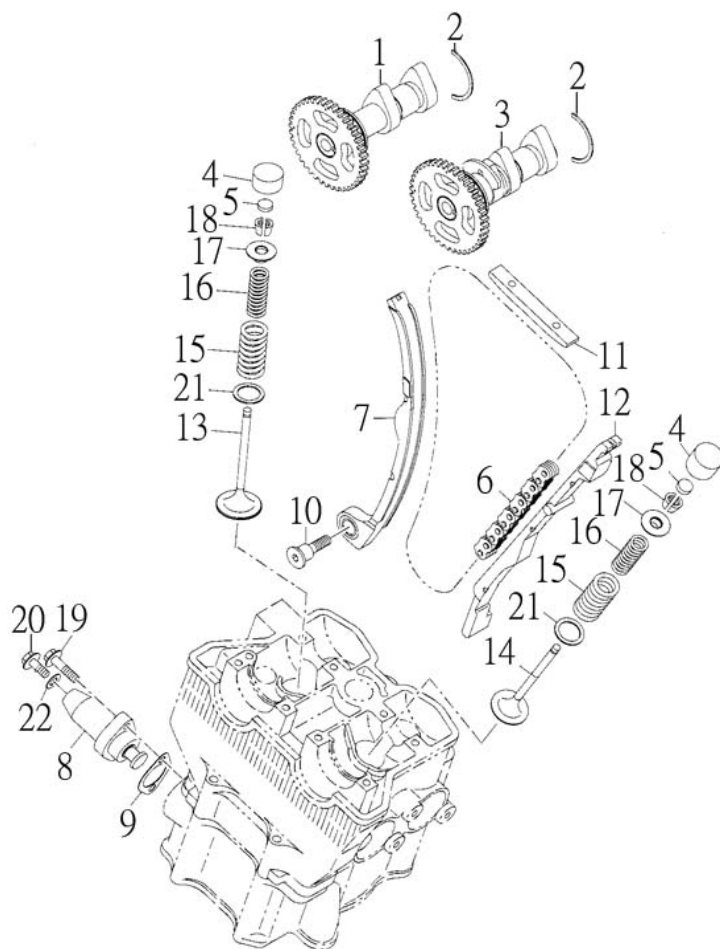
NO.	PARTS NO.	PARTS NAME	Q'TY	NOTE
項目	零件號碼	零件名稱	用量	備註
1	13100-CGV-00	PUMP ASS'Y, OIL	1	機油泵總成
2	13111-CGV-00	BODY, OIL PUMP	1	機油泵本體
3	13116-CGV-00	PLANE OIL PUMP	1	機油泵平板
4	13121-CGV-00	SHAFT, OIL PUMP	1	機油泵齒輪軸
5	13124-CGV-00	OIL PUMP GEAR 25T	1	機油泵傳動齒輪
6	13141-CGV-00	INNER ROTOR (FEED)	1	機油泵進油內轉子
7	13142-CGV-00	OUTER ROTOR (FEED)	1	機油泵進油外轉子
8	13146-CGV-00	INNER ROTOR (SCAV)	1	機油泵排油內轉子
9	13147-CGV-00	OUTER ROTOR (SCAV)	1	機油泵排油外轉子
10	15536-CGV-00	OIL STRAINER UNIT	1	機油濾網
11	94510-30016	PIN, DOWEL A3*15.8	2	滾針
12	94510-30020	PIN, DOWEL A3*19.8	2	滾針
13	96411-06030-B	BOLT, FLANGE	3	凸緣螺栓
14	97010-12010-K	CIRCLIP STW-12	1	C形扣環

五、CARBURETOR 化油器



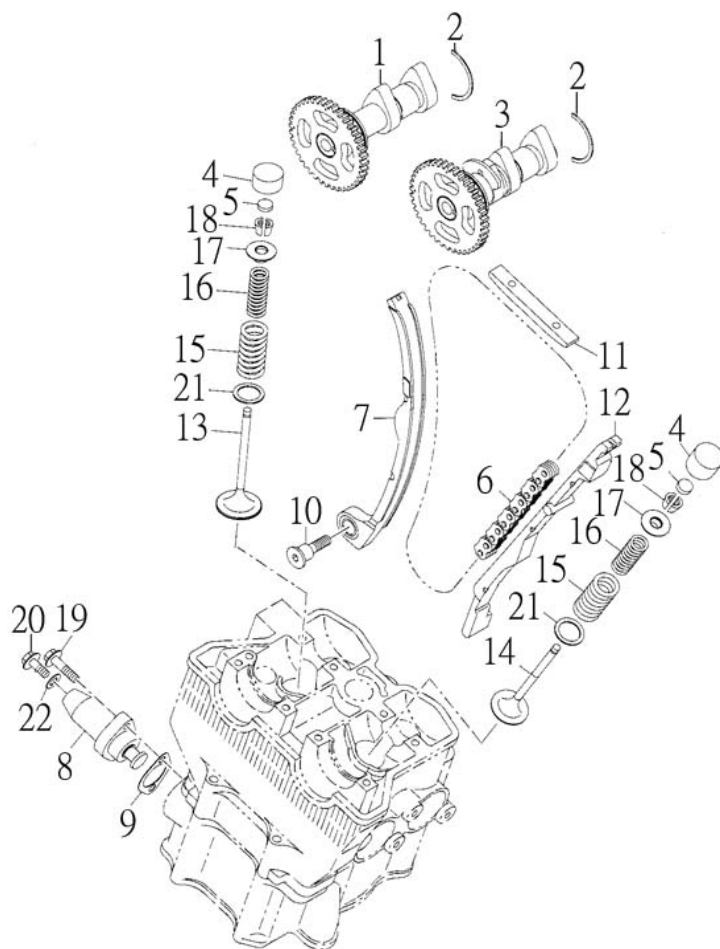
NO. 項目	PARTS NO. 零件號碼	PARTS NAME 零件名稱		Q'TY 用量	NOTE 備註
1	13201-CGV-00	CARBURETOR ASSEMBLY	化油器總成	1	
	13201-CGV-01	CARBURETOR ASSEMBLY	化油器總成	1	E認證
2	13211-CGV-00	NEEDLE SET	油針	1	
	13211-CGV-01	NEEDLE SET	油針	1	E認證
3	13233-CGV-00	SPRING, COMPRESSION COIL	節流閥彈簧	1	
4	13240-CGV-00	JET, MAIN #147.5	主噴口	1	
	13240-CGV-01	JET, MAIN #135	主噴口	1	E認證
5	13242-CGV-00	JET, PILOT #45	引導噴口	1	
6	13258-CGV-00	TOP COMP	真空活塞閥蓋	1	
7	13261-CGV-00	CABLE GUIDE	鋼索導塊	1	
8	13276-CGV-00	COVER	節流閥蓋	1	
9	13296-CGV-00	SEAL	封圈	1	
10	13297-CGV-00	SEAL	封圈	1	
11	61393-URO-00	HOLDER, CABLE	鋼索固定座	1	
12	90311-35050500	TUBE	洩油管	1	
13	90311-65095500	TUBE	通氣管	2	
14	96310-04008-B	SCREW, PAN HEAD	十字孔頭螺絲	3	

六、CAMSHAFT, VALVE 凸輪軸, 閥門



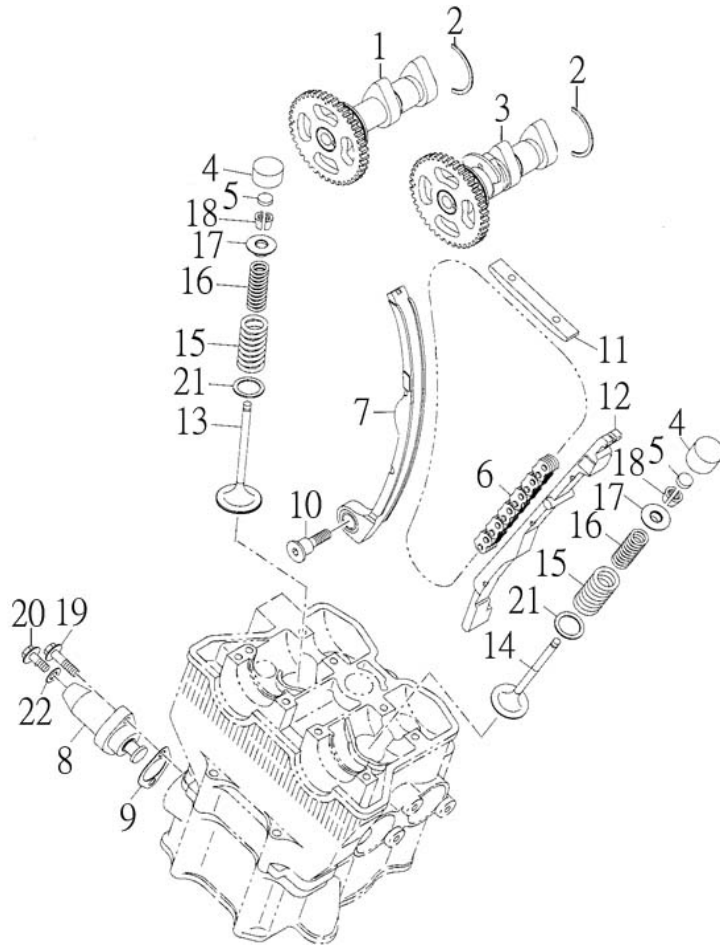
NO.	PARTS NO.	PARTS NAME	Q'TY	NOTE
項目	零件號碼	零件名稱	用量	備註
1	14110-CGV-00	CAMSHAFT (IN) COMP 42T	1	進氣凸輪軸整體
2	14118-CGV-00	BEARING STOPPER	2	軸承扣環
3	14120-CGV-00	CAMSHAFT (EX) COMP 42T	1	排氣凸輪軸整體
4	14436-CGV-00	VALVE LIFTER	4	閥門頂桶
5	14437-CGV-00145	ADJUSTING PAD	4	閥門襯墊 T=1.450
	14437-CGV-00150	ADJUSTING PAD	4	閥門襯墊 T=1.500
	14437-CGV-00155	ADJUSTING PAD	4	閥門襯墊 T=1.550
	14437-CGV-00160	ADJUSTING PAD	4	閥門襯墊 T=1.600
	14437-CGV-00163	ADJUSTING PAD	4	閥門襯墊 T=1.625
	14437-CGV-00165	ADJUSTING PAD	4	閥門襯墊 T=1.650
	14437-CGV-00168	ADJUSTING PAD	4	閥門襯墊 T=1.675
	14437-CGV-00170	ADJUSTING PAD	4	閥門襯墊 T=1.700
	14437-CGV-00173	ADJUSTING PAD	4	閥門襯墊 T=1.725
	14437-CGV-00175	ADJUSTING PAD	4	閥門襯墊 T=1.750
	14437-CGV-00178	ADJUSTING PAD	4	閥門襯墊 T=1.775
	14437-CGV-00180	ADJUSTING PAD	4	閥門襯墊 T=1.800
	14437-CGV-00183	ADJUSTING PAD	4	閥門襯墊 T=1.825
	14437-CGV-00185	ADJUSTING PAD	4	閥門襯墊 T=1.850
	14437-CGV-00188	ADJUSTING PAD	4	閥門襯墊 T=1.875
	14437-CGV-00190	ADJUSTING PAD	4	閥門襯墊 T=1.900
	14437-CGV-00193	ADJUSTING PAD	4	閥門襯墊 T=1.925
	14437-CGV-00195	ADJUSTING PAD	4	閥門襯墊 T=1.950

六、CAMSHAFT, VALVE 凸輪軸, 閥門



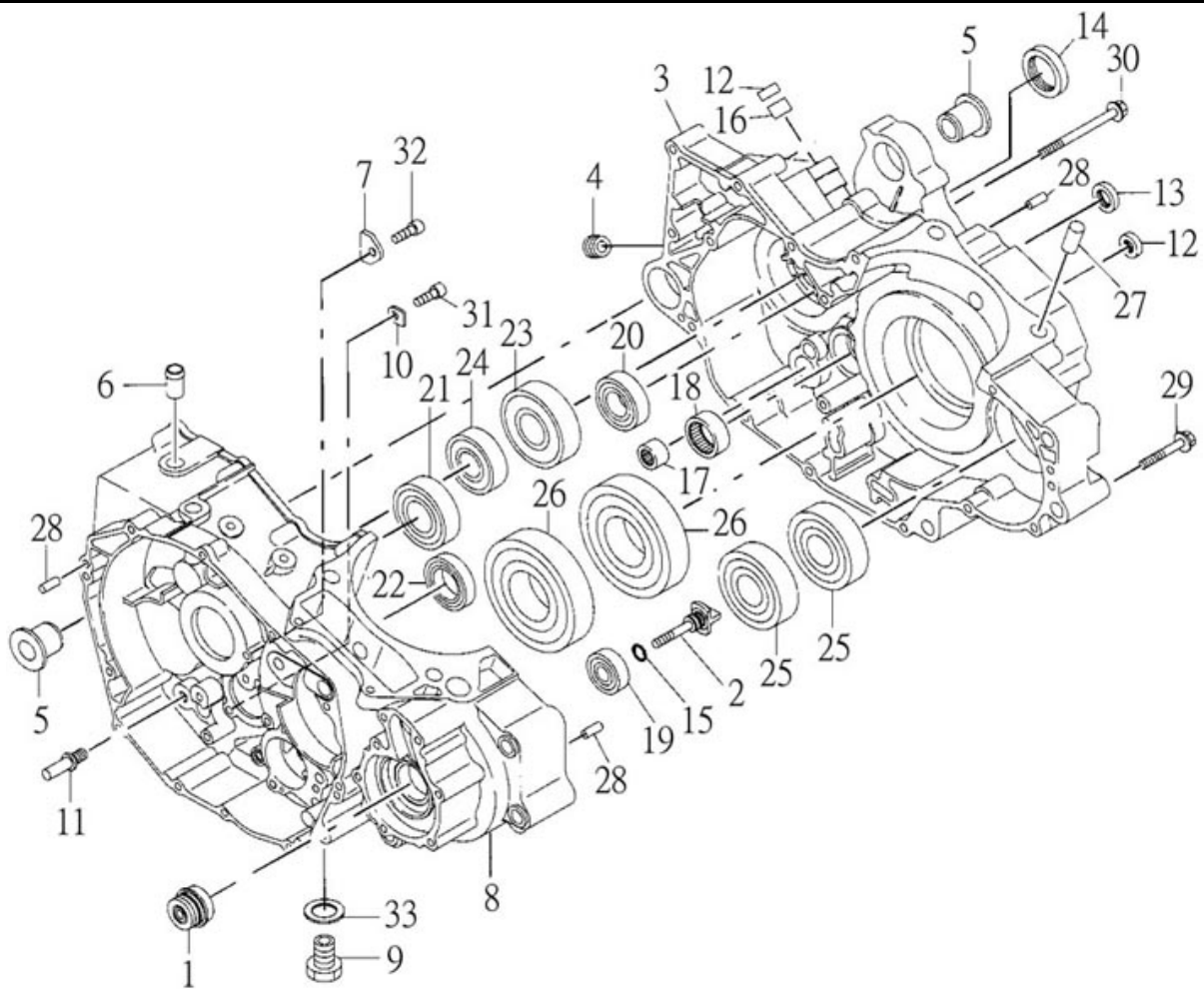
NO.	PARTS NO.	PARTS NAME	Q'TY	NOTE
項目	零件號碼	零件名稱	用量	備註
	14437-CGV-00198	ADJUSTING PAD	4	T=1.975
	14437-CGV-00200	ADJUSTING PAD	4	T=2.000
	14437-CGV-00203	ADJUSTING PAD	4	T=2.025
	14437-CGV-00205	ADJUSTING PAD	4	T=2.050
	14437-CGV-00208	ADJUSTING PAD	4	T=2.075
	14437-CGV-00210	ADJUSTING PAD	4	T=2.100
	14437-CGV-00213	ADJUSTING PAD	4	T=2.125
	14437-CGV-00215	ADJUSTING PAD	4	T=2.150
	14437-CGV-00220	ADJUSTING PAD	4	T=2.200
	14437-CGV-00225	ADJUSTING PAD	4	T=2.250
	14437-CGV-00230	ADJUSTING PAD	4	T=2.300
6	14501-CGV-00	TIMING CHAIN	1	凸輪軸內鏈條
7	14510-CGV-00	TENSIONER, CAM CHAIN	1	鏈條拉力桿
8	14520-CGV-00	LIFTER ASS'Y, TENSIONER	1	鏈條調整器
9	14523-CGV-00	GASKET, TENSIONER LIFTER	1	鏈條調整器墊片
10	14531-CGV-00	PIVOT BOLT M8*22.5/34	1	拉力桿螺絲
11	14550-CGV-00	CHAIN CUIDE 2	1	鏈條上導件
12	14560-CGV-00	CHAIN CUIDE 1	1	鏈條導件
13	14711-CGV-00	VALVE, IN	2	進氣閥門
14	14721-CGV-00	VALVE, EX	2	排氣閥門
15	14751-CGV-00	SPRING, VALVE OUTER	4	閥門外彈簧
16	14761-CGV-00	SPRING, VALVE INNER	4	閥門內彈簧

CAMSHAFT, VALVE 凸輪軸, 閥門



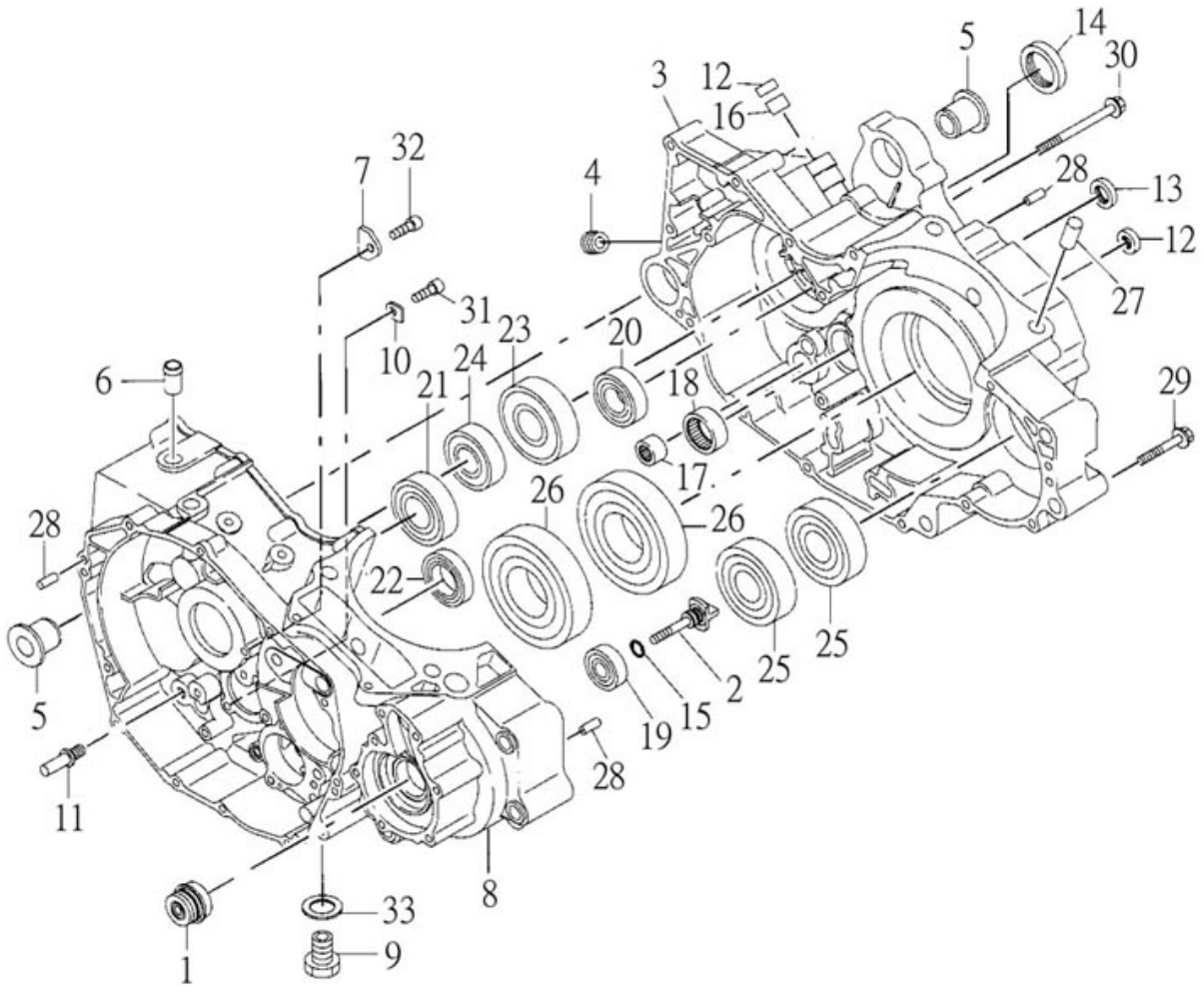
NO.	PARTS NO.	PARTS NAME		Q'TY	NOTE
項目	零件號碼	零件名稱		用量	備註
17	14771-CGV-00	RETAINER, VALVE SPRING	閥門彈簧承盤	4	
18	14781-CGV-00	COTTER, VALVE	閥門鎖扣	8	
19	96411-06025-B	BOLT, FLANGE	凸緣螺栓	2	
20	96414-06008-C	BOLT, FLANGE	凸緣螺栓	1	
21	97201-182512	SEAT, VALVE SPRING Ø18.5*Ø24.56*1.2	彈簧座	4	
22	97231-061510	WASHER, ALUMINUM 6.2*14.6*1	鋁墊圈	1	

七、CRANKCASE 曲軸箱



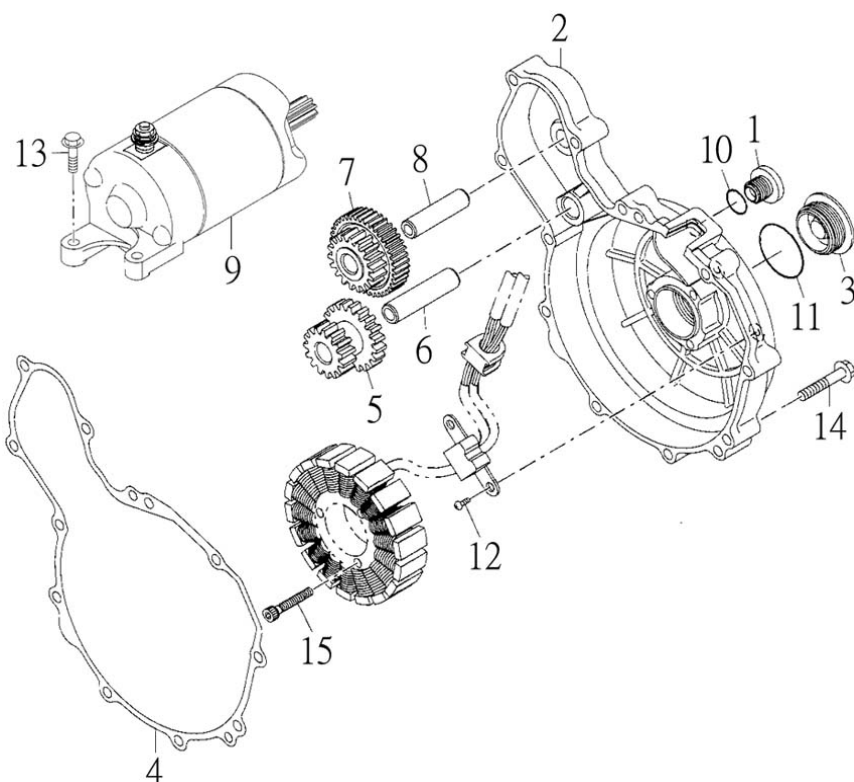
NO.	PARTS NO.	PARTS NAME		Q'TY	NOTE
項目	零件號碼	零件名稱		用量	備註
1	13018-CGV-00	MECHANICAL SEAL COMP.	水封A	1	
2	13021-CGV-00	WATER PUMP SHAFT COMP.	水泵軸	1	
3	15111-CGV-00	CRANKCASE, LEFT	左曲軸箱	1	
4	15113-CGV-00	BLIND PLUG PT1/8	栓塞	1	
5	15118-CGV-00	COLLAR	引擎吊架套	2	
6	15171-CGV-00	PIPE-BREATHER	通風管接頭	1	
7	15174-CGV-00	STOPPER PLATE 4.2t	軸承壓板	1	
8	15211-CGV-00	CRANKCASE, RIGHT	右曲軸箱	1	
9	15223-CGV-00	PLUG	洩油螺栓	1	
10	15374-CGV-00	STOPPER PLATE 2t	軸承壓板	2	
11	24216-CGV-00	STOPPER PIN	變速導向桿	1	
12	93110-12185	OIL SEAL SDD 12*18*5	油封	2	
13	93110-13225	OIL SEAL SDD 13*22*5	油封	1	
14	93110-25387	OIL SEAL HMSA 25*38*7	油封	1	
15	93210-19088	Q-RING Ø1.9*Ø8.8	護油圈	1	
16	93310-121812	NEEDLE BEARING (HK 1212)	滾針軸承	1	
17	93310-131912	NEEDLE BEARING (HK 1312)	滾針軸承	1	
18	93310-2532120	NEEDLE BEARING (HK 2512)	滾針軸承	1	
19	93320-123210UU	BALL BEARING 6201DU2	滾珠軸承	1	
20	93320-204212	BALL BEARING 6004	滾珠軸承	1	
21	93320-204714	BALL BEARING 6204	滾珠軸承	1	
22	93320-254209	BALL BEARING 6905	滾珠軸承	1	

七、CRANKCASE 曲軸箱



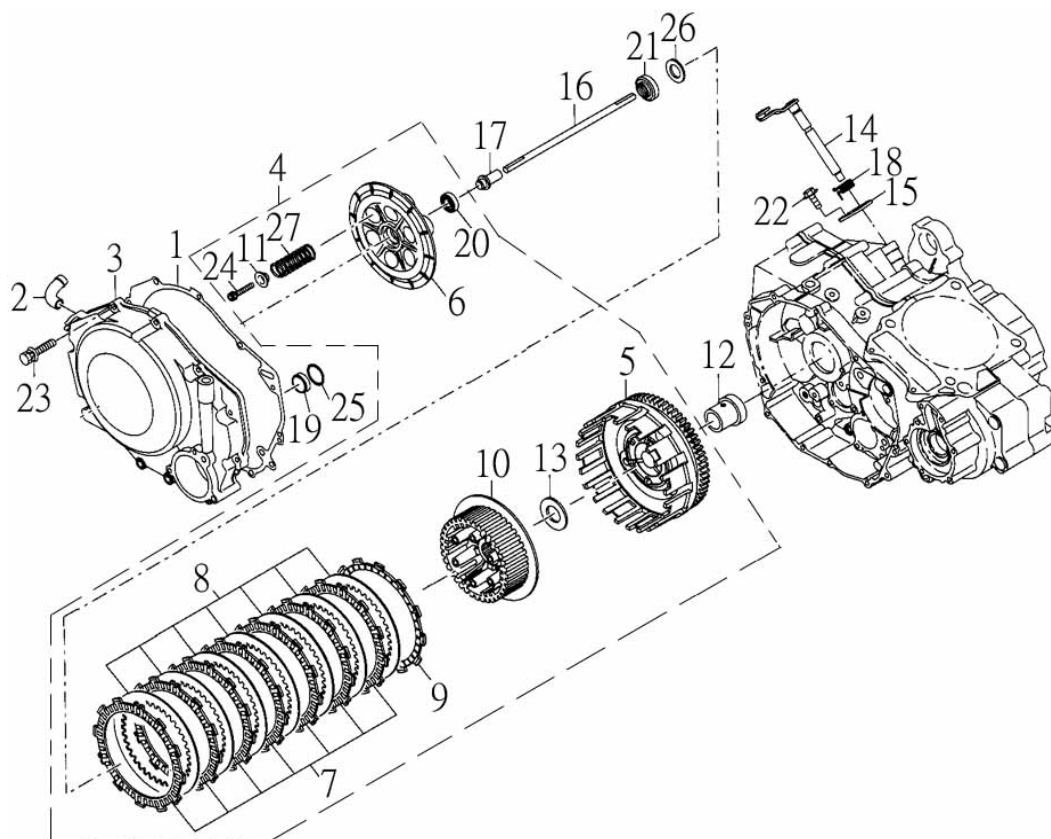
NO. 項目	PARTS NO. 零件號碼	PARTS NAME 零件名稱		QTY 用量	NOTE 備註
23	93320-256217	BALL BEARING 6305	滾珠軸承	1	
24	93321-255215	BALL BEARING	滾珠軸承	1	TMB 205
25	93321-256217	BALL BEARING	滾珠軸承	2	TMB 305X77
26	93321-409023M	BALL BEARING 6308X50CM40	滾珠軸承	2	TMBX39/35
27	94410-14718	PIPE KNOCK Ø12*Ø14.7*18L	定位銷	2	
28	94510-60012	DOWEL PIN Ø6*12	滾針	6	
29	96411-06040-B	FLANGE BOLT	凸緣螺栓	7	
30	96411-06075-B	FLANGE BOLT	凸緣螺栓	7	
31	96510-06012-C	BOLT, SOCKET	六角承窩螺栓	2	
32	96510-06016-C	BOLT, SOCKET	六角承窩螺栓	1	
33	97231-142010	GASKET	鋁墊圈	1	

八、LEFT CRANKCASE COVER 左曲軸箱蓋



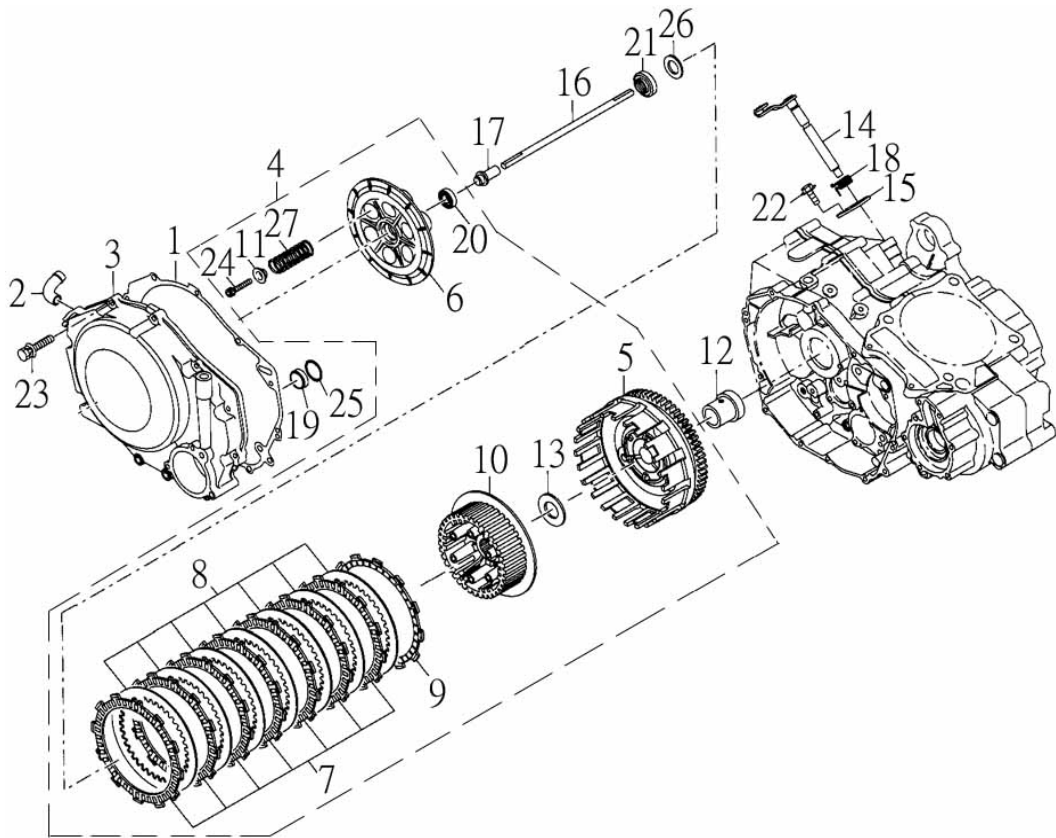
NO.	PARTS NO.	PARTS NAME	Q'TY	NOTE
項目	零件號碼	零件名稱	用量	備註
1	12655-CGV-00	CAP, A.C.G	1	A.C.G蓋
2	15411-CGV-00	COVER, L CRANKCASE	1	左曲軸箱蓋
3	15417-CGV-00	CAP, L CRANKCASE COVER	1	左曲軸箱蓋飾蓋
4	15481-CGV-00	GASKET, L CRANKCASE COVER	1	左曲軸箱蓋墊片
5	23612-CGV-00	REDUCTION GEAR 1	1	減速齒輪1
6	23613-CGV-00	SHAFT 1 21T/14T	1	減速齒輪軸1
7	23660-CGV-00	REDUCTION GEAR 2	1	減速齒輪2
8	23663-CGV-00	SHAFT 2 40T/17T	1	減速齒輪軸2
9	35800-CGV-00	MOTOR ASS'Y, STARTER	1	起動馬達總成
10	93210-23127	O-RING Ø2.3*Ø12.7	1	護油圈
11	93210-23277	O-RING Ø2.3*Ø27.7	1	護油圈
12	96312-05012-C	SCREW, PAN HEAD WITH WASHER	2	十字孔頭螺絲附墊圈
13	96411-06025-B	BOLT, FLANGE	2	凸緣螺栓
14	96411-06035-B	BOLT, FLANGE	11	凸緣螺栓
15	96510-05030-K	BOLT, SOCKET	3	六角承窩螺栓

九、RIGHT CRANKCASE COVER 右曲軸箱蓋



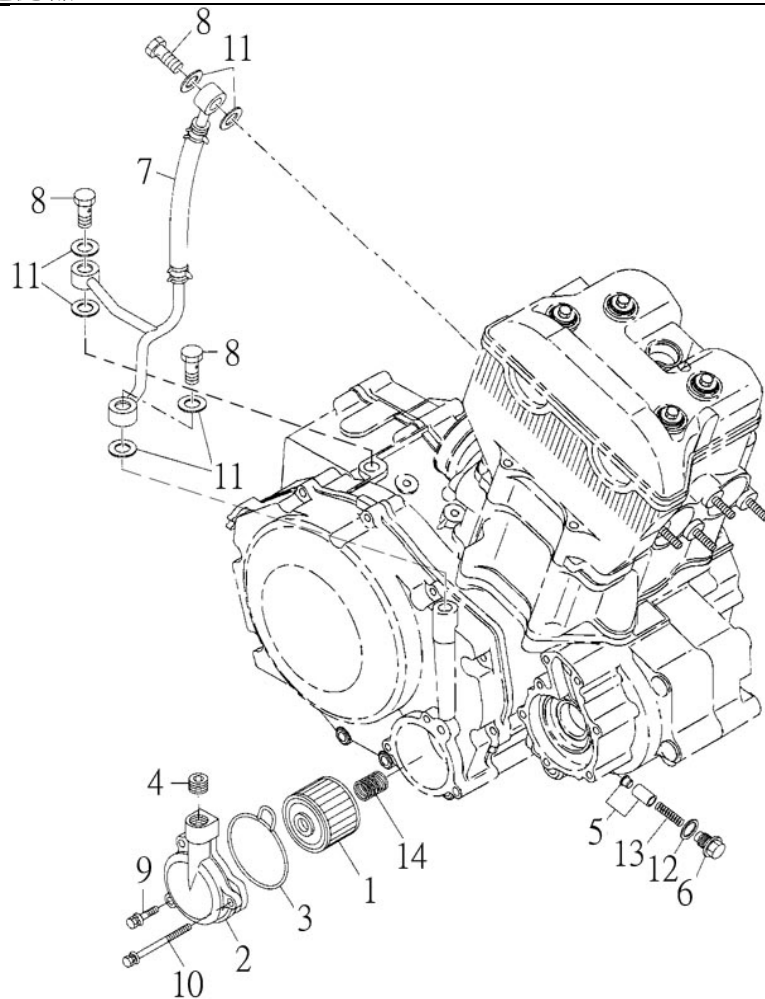
NO.	PARTS NO.	PARTS NAME	Q'TY	NOTE
項目	零件號碼	零件名稱	用量	備註
1	15221-CGV-00	GASKET, R CRANKCASE COVER	1	右曲軸箱蓋墊片
2	15271-CGV-00	PIPE COMP.	1	通氣管接頭
3	15511-CGV-00	COVER, R CRANKCASE COMP	1	右曲軸箱蓋
4	25602-CGV-00	CLUTCH COMP	1	離合器組
5	25611-CGV-00	OUTER COMP, CLUTCH 72T	1	離合器外套
6	25621-CGV-00	PLATE, CLUTCH PRESSURE	1	離合器壓力板
7	25622-CGV-00	DISK A, CLUTCH FRICTION	7	離合器摩擦板A
8	25623-CGV-00	PLATE, CLUTCH	7	離合器板
9	25627-CGV-00	DISK B, CLUTCH FRICTION	1	離合器摩擦板B
10	25661-CGV-00	CENTER, CLUTCH	1	離合器中心體
11	25670-CGV-00	WASHER, CLUTCH SPRING	6	離合器彈簧座
12	25687-CGV-00	DISTANCE COLLAR	1	離合器襯套
13	25688-CGV-00	WASHER, SPLINE Ø22.1*Ø41.9*2.5	1	離合器墊圈
14	25723-CGV-00	LEVER, CLUTCH	1	離合器拉桿
15	25726-CGV-00	PLATE	1	離合器拉桿固定板
16	25731-CGV-00	PUSH ROD	1	離合器連推桿
17	25732-CGV-00	PUSHING PLATE	1	離合器推桿
18	25753-CGV-00	SPRING, CLUTCH LEVER	1	離合器拉桿彈簧
19	93110-14245	OIL SEAL 14*24*5	1	油封
20	93320-122808	BALL BEARING 6001	1	滾珠軸承
21	95211-182711	LOCK NUT	1	六角制止螺帽
22	96411-06020-B	BOLT, FLANGE	1	凸緣螺栓

九、RIGHT CRANKCASE COVER 右曲軸箱蓋



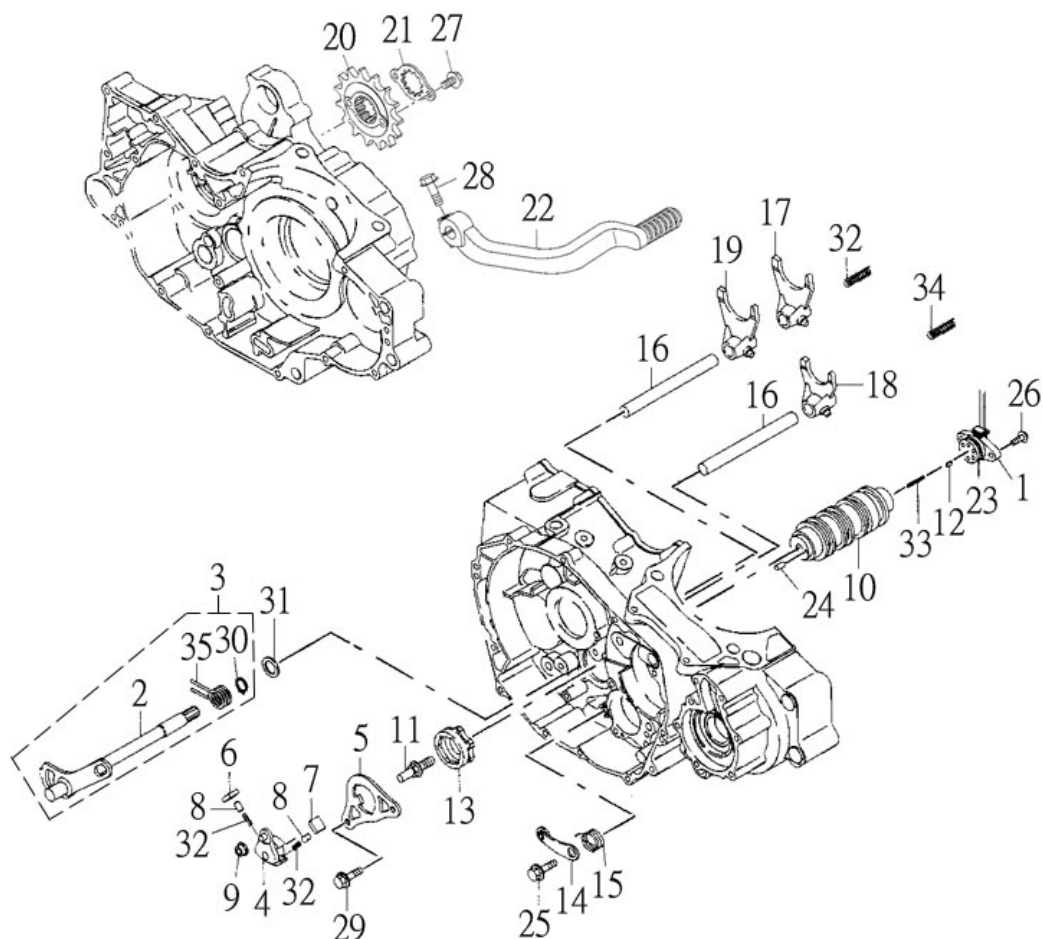
NO.	PARTS NO.	PARTS NAME	Q'TY	NOTE
項目	零件號碼	零件名稱	用量	備註
23	96411-06025-B	BOLT, FLANGE	11	凸緣螺栓
24	96510-06035-K	BOLT, SOCKET	6	六角承窩螺栓
25	97012-24012-K	CIRCLIP RTW-24	1	C形扣環
26	97310-182323	WASHER, CONICAL SPRING 18.5*30*2.3/2.6	1	錐形彈簧墊圈
27	97501-2420054	SPRING, CLUTCH Ø2.35*54	6	離合器彈簧

十、OIL FILTER 機油過濾器



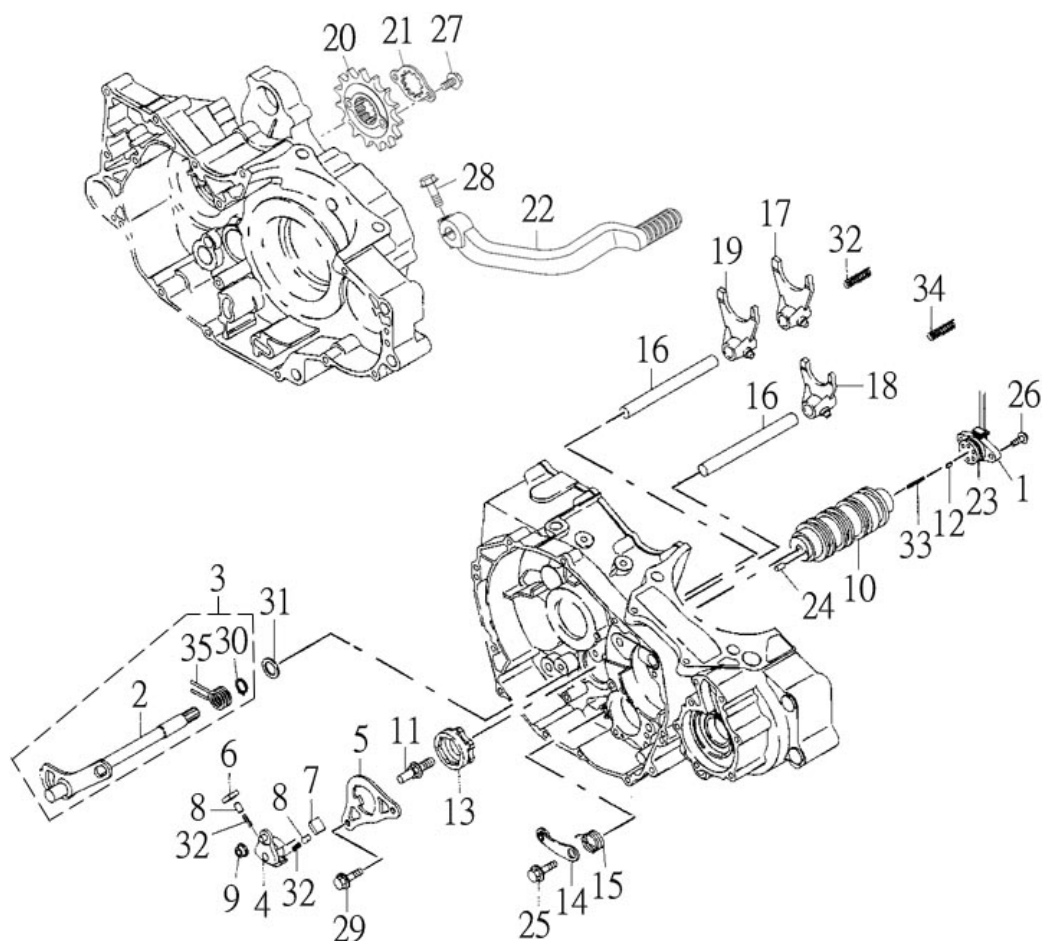
NO. 項目	PARTS NO. 零件號碼	PARTS NAME 零件名稱	Q'TY 用量	NOTE 備註
1	15533-CGV-00	OIL FILTER COMP. Ø50*35.6	1	機油過濾器
2	15551-CGV-00	FILTER COVER ASS'Y	1	過濾器飾蓋
3	15552-CGV-00	SEAL	1	過濾器飾蓋封圈
4	15553-CGV-00	PLUG PT1/4*9L	1	栓塞
5	15556-CGV-00	VALVE (ONEWAY) ASS'Y	1	單向閥門
6	15558-CGV-00	PLUG (ONEWAY)	1	單向閥門栓塞
7	43322-CGV-00	PIPE, LUBRICATION	1	油管組件
8	94716-12030-B	BOLT, UNION	3	接合螺栓
9	96411-06025-B	BOLT, FLANGE	2	凸緣螺栓
10	96411-06065-B	BOLT, FLANGE	1	凸緣螺栓
11	97230-121810	WASHER, COPPER 12.5*18*1	6	銅墊圈
12	97231-111910	WASHER, ALUMINUM Ø11.4*Ø19.1*1	1	鋁墊圈
13	97501-0507025	SPRING (ONEWAY VALVE) Ø0.5*24.6	1	單向閥門彈簧
14	97501-1416020	SPRING (FILTER) Ø1.4*19.5L	1	機油過濾器彈簧

十一、TRANSMISSION, STARTER 傳動系統



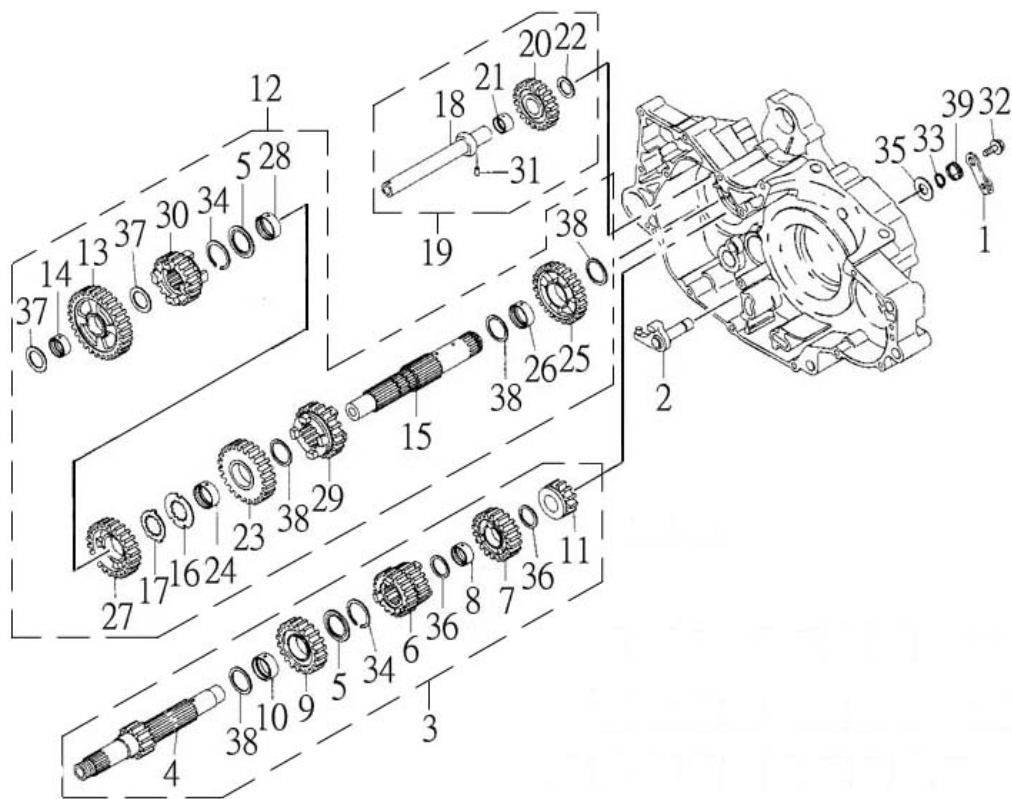
NO. 項目	PARTS NO. 零件號碼	PARTS NAME 零件名稱	Q'TY 用量	NOTE 備註
1	15130-CGV-00	SWITCH ASS'Y	1	檔位開關組
2	24201-CGV-00	SHIFT SHAFT	1	變速踏桿軸
3	24210-CGV-00	SHIFT SHAFT COMP.	1	變速踏桿軸組
4	24211-CGV-00	DRUM SHIFTER	1	換檔器
5	24212-CGV-00	GUIDE PLATE	1	換檔器導板
6	24213-CGV-00	RATCHET PAWL A	1	制轉爪A
7	24214-CGV-00	RATCHET PAWL B	1	制轉爪B
8	24215-CGV-00	PAWL PLUNGER	2	制轉爪活塞
9	24217-CGV-00	SHIFTER COLLAR	1	換檔器軸環
10	24220-CGV-00	DRUM, GEAR SHIFT	1	齒輪變速筒
11	24221-CGV-00	SHIFTER PIN	1	變速凸輪固定軸
12	24223-CGV-00	POINT, NEUTRAL 3.9*6.9	1	空檔轉子
13	24226-CGV-00	SHIFT CAM	1	齒輪變速凸輪
14	24228-CGV-00	STOPPER ARM COMP.	1	變速凸輪制止器
15	24229-CGV-00	SPRING, STOPPER	1	制止器彈簧
16	24236-CGV-00	FORK SHAFT 12*122.3	2	變速叉樞軸
17	24237-CGV-00	SHIFT FORK L	1	齒輪變速左叉
18	24238-CGV-00	SHIFT MAIN FORK	1	齒輪變速中叉
19	24239-CGV-00	SHIFT FORK R	1	齒輪變速右叉
20	25713-CGV-00	SPROCKET 520-14T	1	驅動鏈輪
21	25716-CGV-00	PLATE, FIXING	1	驅動鏈輪固定板
22	53210-CGV-00	CHANGE PEDAL ASS'Y	1	變速踏板總成

十一、TRANSMISSION, STARTER 傳動系統



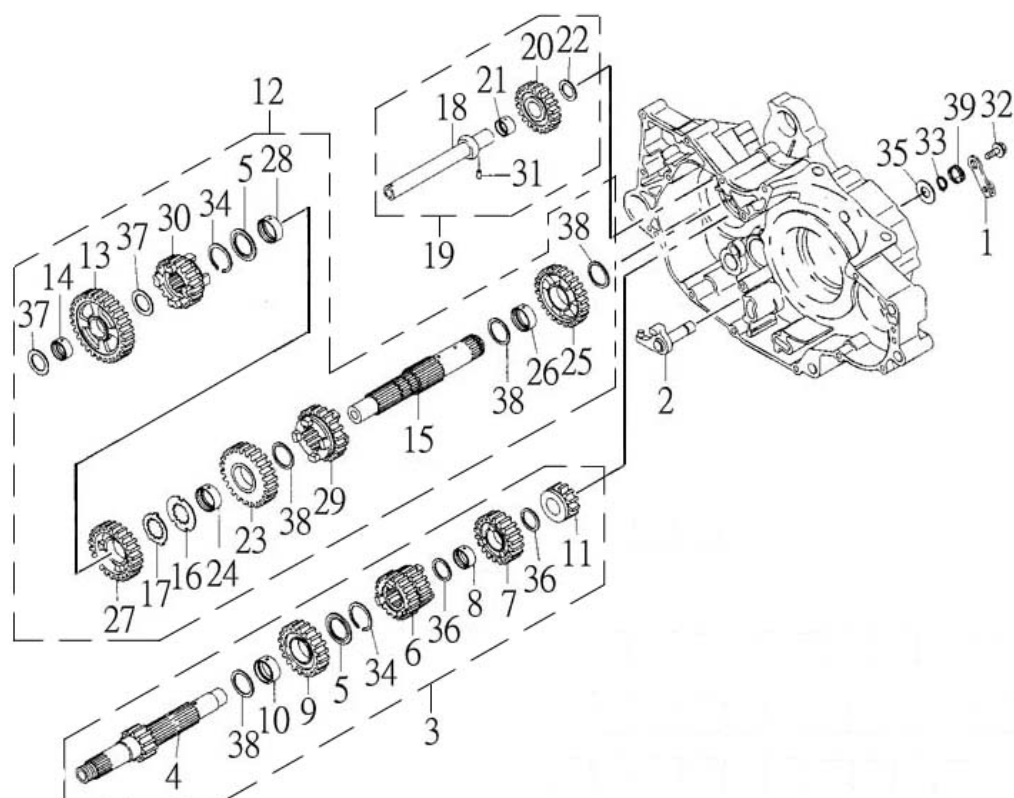
NO. 項目	PARTS NO. 零件號碼	PARTS NAME 零件名稱	Q'TY 用量	NOTE 備註
23	93210-25210	O-RING 2.5*21	1	護油圈
24	94510-40013	DOWEL PIN	1	滾針
25	94710-06021	BOLT, STOPPER	1	制止器固定軸
26	96314-05020-C	SCREW, PAN HEAD WITH WASHER	2	十字孔頭螺絲附墊圈
27	96411-06012-B	BOLT, FLANGE	2	凸緣螺栓
28	96411-06025-B	BOLT, FLANGE	1	凸緣螺栓
29	96414-06020-B	BOLT, FLANGE	2	凸緣螺栓
30	97010-13010-K	CIRCLIP STW-13	1	C形扣環
31	97201-132110-K	WASHER 13.8*20.9*1	1	平面墊圈
32	97501-0504012	SPRING, PLUNGER 0.5*3.86*12.1	2	制轉爪活塞彈簧
33	97501-0604022	SPRING, POINT 0.6*3.6*21.6	1	轉子彈簧
34	97501-0808032	SPRING, FORK SHAFT 0.8*7.5*31.7	2	變速叉彈簧
35	97510-3214000	RETURN SPRING	1	變速踏桿回位彈簧

十二、TRANSMISSION, STARTER 傳動系統



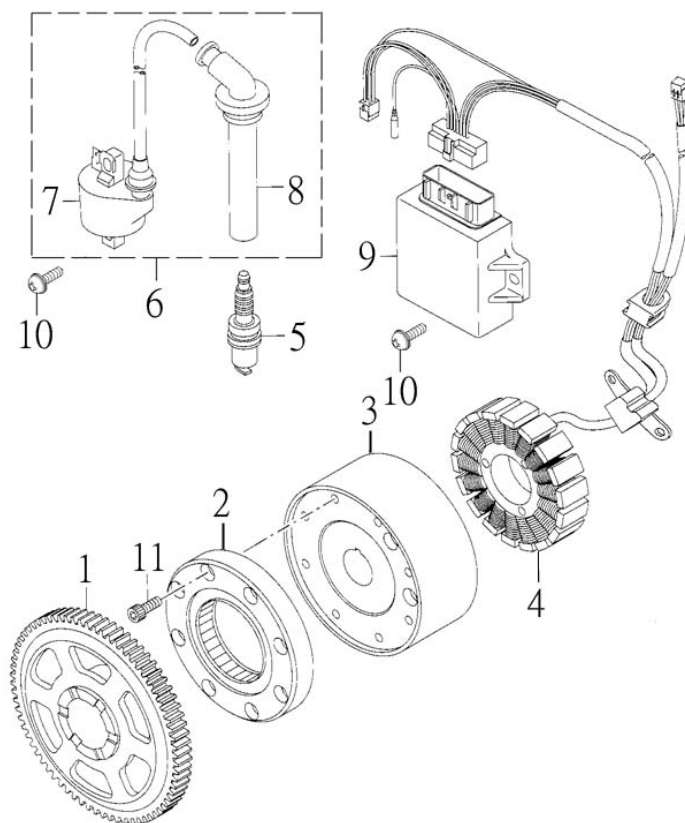
NO.	PARTS NO.	PARTS NAME	Q'TY	NOTE
項目	零件號碼	零件名稱	用量	備註
1	24206-CGV-00	REVERSE ARM LEVER	1	倒檔臂拉桿
2	24233-CGV-00	REVERSE ARM COMP.	1	倒檔臂組
3	26100-CGV-00	MAIN SHAFT ASS'Y	1	主軸總成
4	26111-CGV-00	MAIN SHAFT, TRANSMISSION 14T	1	傳動主軸
5	26118-CGV-00	WASHER, SPLINE	2	齒輪墊圈
6	26120-CGV-00	GEAR, MAIN SHAFT SECOND 18T/21T	1	主軸二三速齒輪
7	26140-CGV-001	GEAR, MAIN SHAFT FOURTH 23T	1	主軸四速齒輪
8	26140-CGV-002	COLLAR	1	主軸四速齒輪軸襯
9	26150-CGV-001	GEAR, MAIN SHAFT FIFTH 25T	1	主軸五速齒輪
10	26150-CGV-002	COLLAR	1	主軸五速齒輪軸襯
11	26190-CGV-00	REVERSE GEAR 14T	1	主軸倒檔齒輪
12	26400-CGV-00	COUNTER SHAFT ASS'Y	1	副軸總成
13	26410-CGV-001	GEAR, COUNTER SHAFT FIRST 34T	1	副軸低速齒輪
14	26410-CGV-002	COLLAR	1	副軸低速齒輪軸襯
15	26411-CGV-00	COUNTER SHAFT, TRANSMISSION	1	傳動副軸
16	26413-CGV-00	WASHER, SPLINE	1	齒輪墊圈
17	26414-CGV-00	LOCK WASHER	1	制止墊圈
18	26415-CGV-00	AXLE, IDLE GEAR	1	倒檔惰齒輪軸
19	26415-CGV-00A	REVERSE GEAR ASS'Y	1	倒檔惰齒輪總成
20	26416-CGV-001	IDLE GEAR, REVERSE 23T	1	倒檔惰齒輪
21	26416-CGV-002	COLLAR	1	倒檔惰齒輪軸襯
22	26417-CGV-00	WASHER	1	齒輪襯片

十二、TRANSMISSION, STARTER 傳動系統



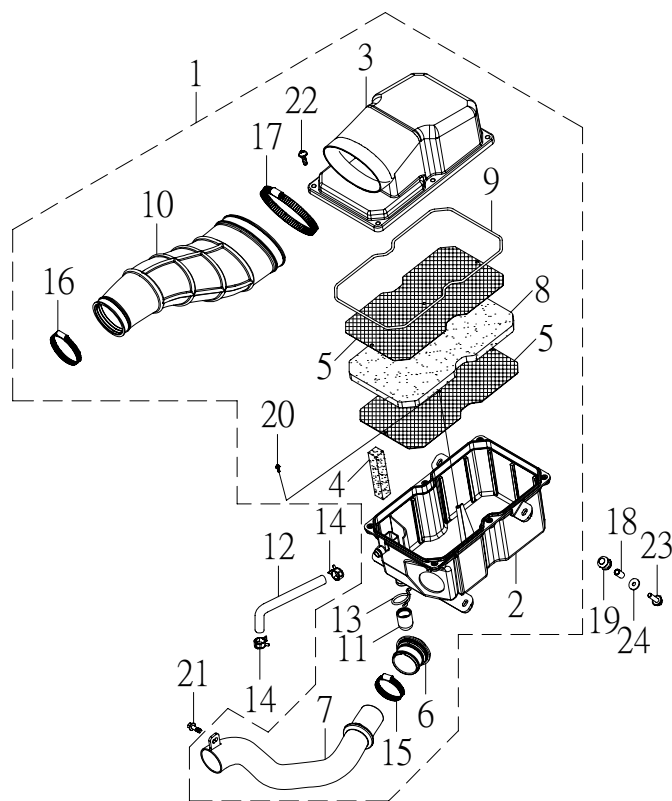
NO. 項目	PARTS NO. 零件號碼	PARTS NAME 零件名稱	Q'TY 用量	NOTE 備註
23	26420-CGV-001	GEAR, COUNTER SHAFT SECOND 29T	1	副軸二速齒輪
24	26420-CGV-002	COLLAR	1	副軸二速齒輪軸襯
25	26426-CGV-001	GEAR, COUNTER SHAFT REVERSE 29T	1	副軸倒檔齒輪
26	26426-CGV-002	COLLAR	1	副軸倒檔齒輪軸襯
27	26430-CGV-001	GEAR, COUNTER SHAFT THIRD 27T	1	副軸三速齒輪
28	26430-CGV-002	COLLAR	1	副軸三速齒輪軸襯
29	26440-CGV-00	GEAR, COUNTER SHAFT FOURTH 25T	1	副軸四速齒輪
30	26450-CGV-00	GEAR, COUNTER SHAFT FIFTH 23T	1	副軸五速齒輪
31	94510-40013	DOWEL PIN 4*13	1	滾針
32	96411-06012-B	BOLT, FLANGE	1	凸緣螺栓
33	97010-12010-K	CIRCLIP STW-12	1	C形扣環
34	97012-22012	CIRCLIP	2	C形同心扣環
35	97201-122710-C	WASHER 12.3*26.9*1	1	平面墊圈
36	97201-202610	WASHER	2	齒輪襯片
37	97201-203010	WASHER 20.3*29.9*1	2	齒輪襯片
38	97201-253110	WASHER 25.3*31*1	4	齒輪襯片
39	97508-2219090-B	REVERSE ARM SPRING	1	倒檔臂彈簧

十三、GENERATOR 發電機



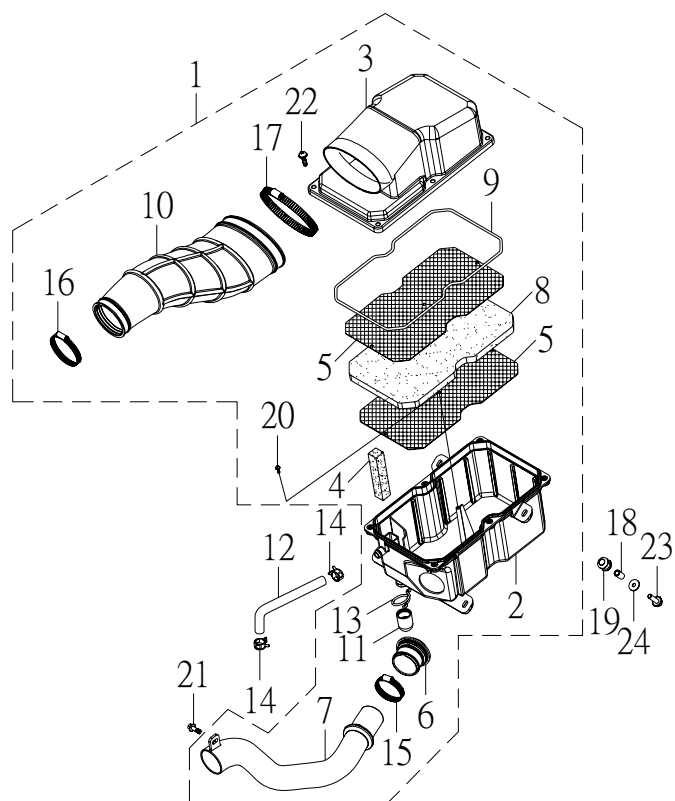
NO.	PARTS NO.	PARTS NAME		Q'TY	NOTE
項目	零件號碼	零件名稱		用量	備註
1	23524-CGV-00	STARTER GEAR 72T	起動輪	1	
2	23570-CGV-00	ONE WAY CLUTCH ASS'Y	起動離合器總成	1	
3	35550-CGV-00	ROTOR ASSEMBLY	轉子總成	1	
4	35560-CGV-00	BASE ASSEMBLY	發電機座總成	1	
5	62210-CGV-00	PLUG, SPARK (DCPR8E)	火星塞	1	
6	62310-CGV-00	IGNITION COIL ASS'Y	點火線圈總成	1	
7	62311-CGV-00	IGNITION COIL	點火線圈	1	
8	62320-CGV-00	PLUG CAP ASS'Y	火星塞蓋總成	1	
9	62540-CGV-00	C.D.I UNIT ASS'Y	C.D.I 組件總成	1	
10	96312-06020-C	SCREW, PAN HEAD WITH WASHER	十字孔頭螺絲附墊圈	4	
11	96510-06018-K	BOLT, SOCKET	六角承窩螺栓	8	

十四、INTAKE 空氣吸入口



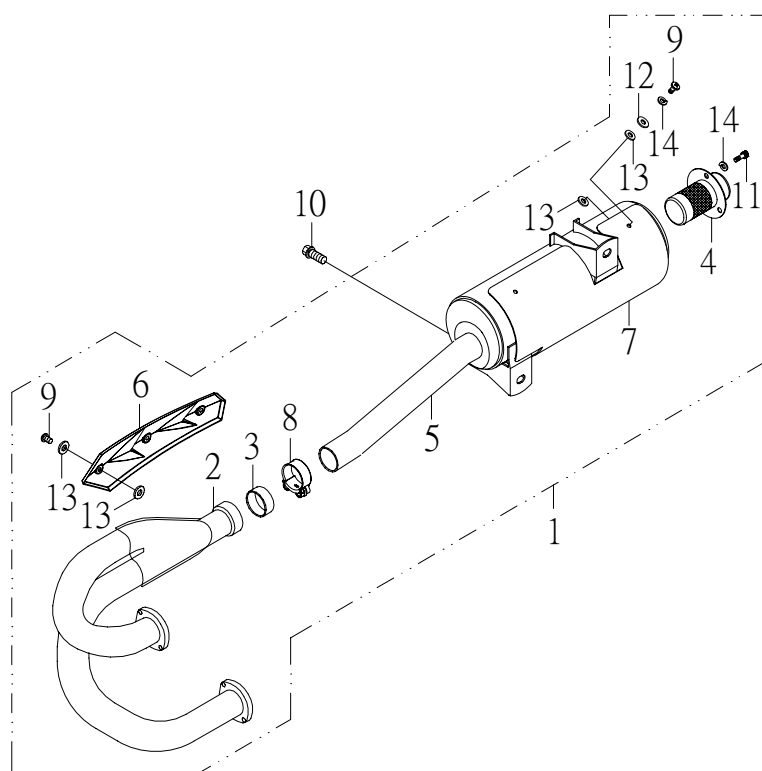
NO.	PARTS NO.	PARTS NAME	Q'TY	NOTE	
項目	零件號碼	零件名稱	用量	備註	
1	13410-CGV-00	AIR CLEANER ASSEMBLY	1	空氣濾清器總成	
2	13411-CGV-00	CASE, AIR CLEANER	1	空氣濾清器箱	
3	13412-CGV-00	CAP, CLEANER CASE	1	空氣濾清器箱蓋	
4	13426-CGV-00	FILTER BREATHER	1	集油室空氣濾綿	
5	13433-CGV-00	PLATE, ELEMENT SET	2	濾清網固定板	
6	13436-CGV-00	RUBBER RING, DUCT	1	進氣管橡皮環	
7	13437-CGV-00	DUCT	1	進氣管	
8	13451-CGV-00	ELEMENT, AIR CLEANER	1	空氣濾清網	
9	13452-CGV-00	SEAL, AIR CLEANER COVER	1	濾清箱封圈	
10	13453-CGV-00	JOINT, AIR CLEANER	1	濾清箱接頭	
11	13492-CGV-00	CAP DRAIN	1	排水蓋	
12	15172-CGV-00	HOSE, BREATH	1	曲軸箱通氣管	
13	90210-16023-C	CLIP	1	管夾	
14	90220-12178-C	CLIP 12*17.8	2	板型管夾	
15	90280-127051	CLIP HC1 304SS	1	美式管夾	12.7*Ø27~Ø51
16	90281-090070	CLIP ZHC 304SS	1	斑馬式管夾	9*Ø50~Ø70
17	90281-120120	CLIP ZHC 304SS	1	斑馬式管夾	12*Ø100~Ø120
18	93510-071017-B	COLLAR	4	機油箱軸環	
19	93580-101919	GROMMET	4	機油箱套環	
20	96112-41218-K	SCREW, TAPPING	5	自攻螺絲	
21	96218-06016-B	BOLT, HEXAGON WITH WASHER	1	六角螺栓附墊圈	
22	96313-06020-K	SCREW, PAN HEAD WITH WASHER	6	十字孔頭螺絲附墊圈	

十四、INTAKE 空氣吸入口



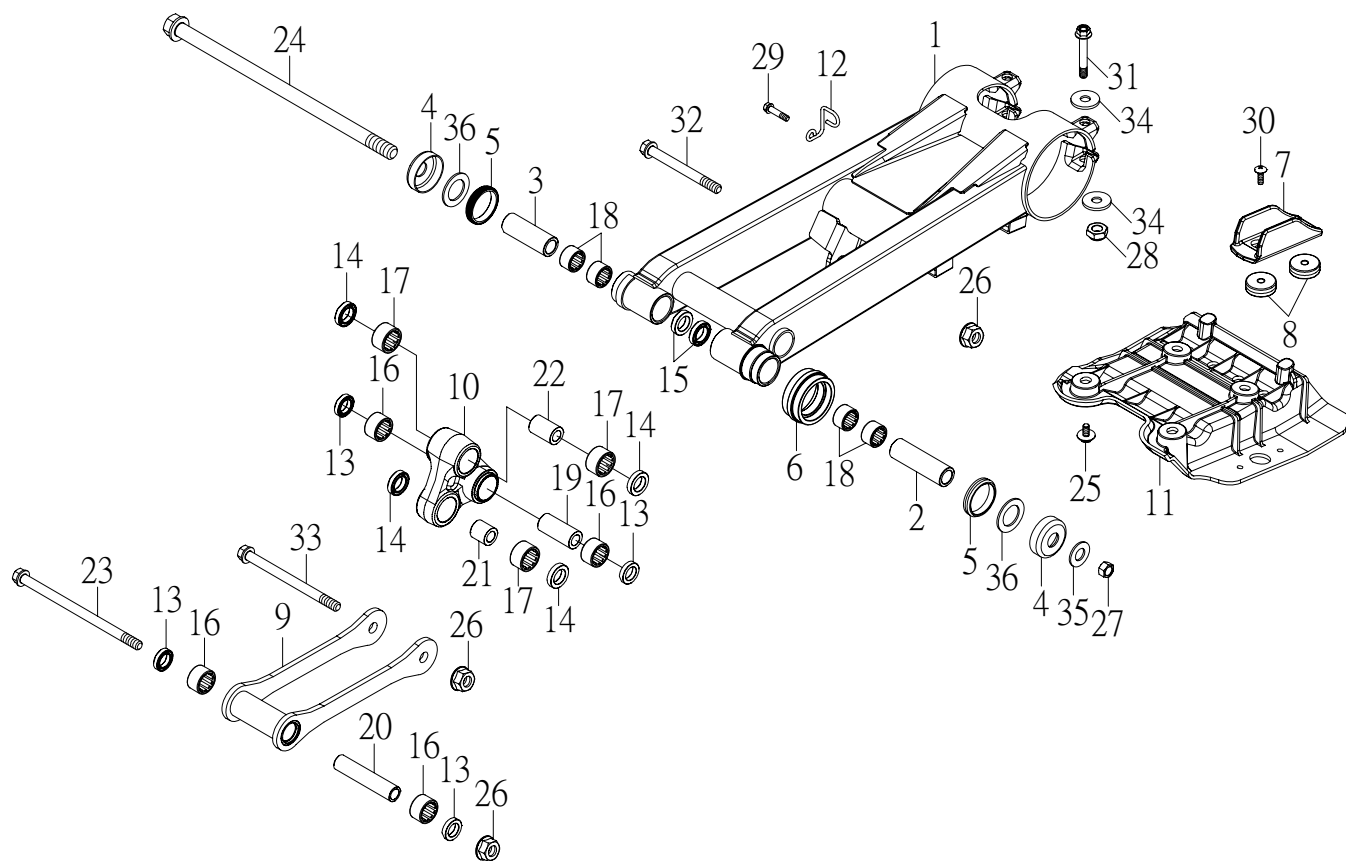
NO.	PARTS NO.	PARTS NAME	Q'TY	NOTE
項目	零件號碼	零件名稱	用量	備註
23	96414-06028-B	BOLT, FLANGE	4	凸緣螺栓
24	97201-062220-B	WASHER, PLATE	4	平面墊圈

十五、EXHAUST MUFFLER 排氣管



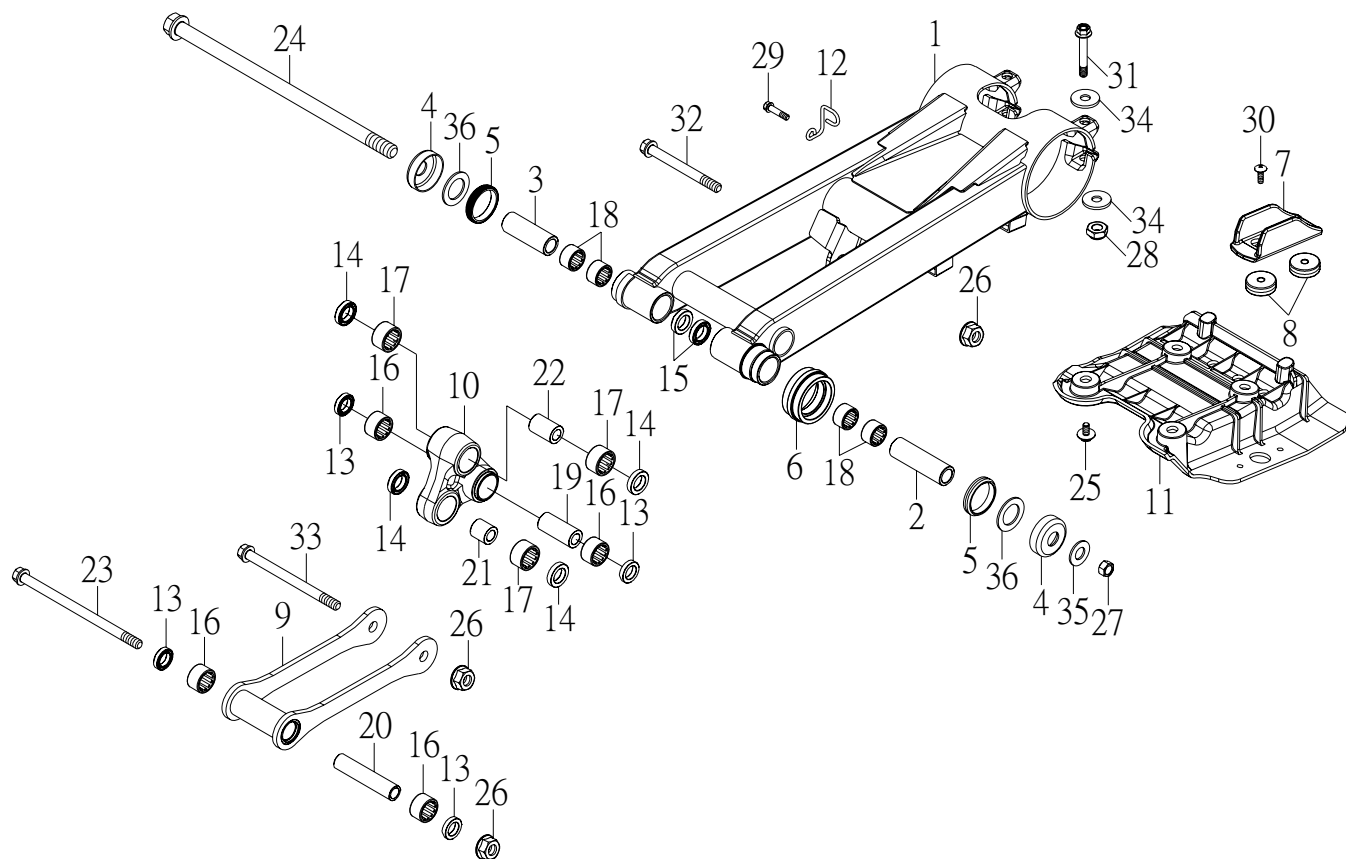
NO.	PARTS NO.	PARTS NAME		Q'TY	NOTE
項目	零件號碼	零件名稱		用量	備註
1	31610-CGV-00	EXHAUST MUFFLER ASS'Y	排氣管總成	1	
	31610-CGV-00C	EXHAUST MUFFLER ASS'Y	排氣管總成	1	E 認證
2	31611-CGV-00	PIPE, EXHAUST	排氣導管	1	
	31611-CGV-00C	PIPE, EXHAUST	排氣導管	1	E 認證
3	31614-CGV-00	GASKET, MUFFLER	消音筒墊片	1	
4	31616-CGV-00	ARRESTOR, SPARK Ø 25	火花捕捉器	1	
	31616-CGV-00C	ARRESTOR, SPARK Ø 15	火花捕捉器	1	E 認證
5	31617-CGV-00	MUFFLER COMP	消音筒	1	
6	31618-CEW-00	PROTECTOR, EXHAUST	排氣管護罩	1	
7	31619-CGV-00	PROTECTOR, ELIMINATOR	消音筒護罩	1	
8	31624-CGV-00	CLIP	消音筒管束	1	
9	96316-06010-K	SCREW, PAN HEAD	十字孔頭螺絲	7	
10	96414-08016-B	BOLT, FLANGE	凸緣螺栓	1	
11	96510-06020-K	BOLT, SOCKET	六角承窩螺栓	3	
12	97201-061310-K	WASHER, PLATE 6*18*2.0	平面墊圈	4	
13	97210-061215	WASHER, PLATE	石棉墊圈	14	
14	97301-061112-K	WASHER, SPRING	彈簧墊圈	7	

十六、REAR ARM 擺動臂



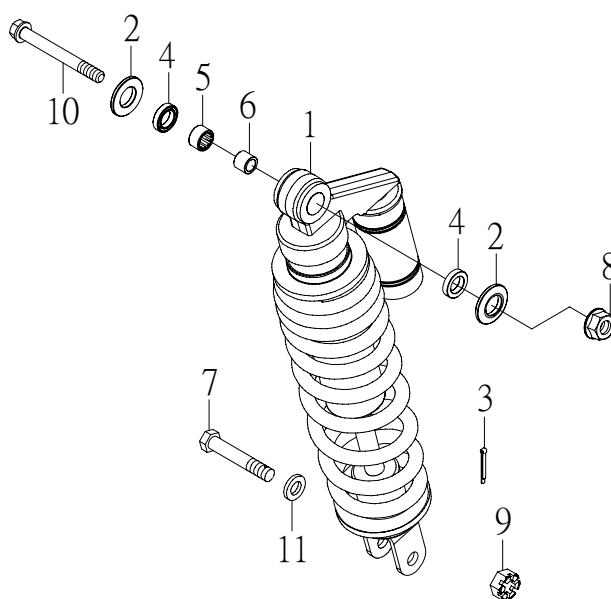
NO. 項目	PARTS NO. 零件號碼	PARTS NAME 零件名稱	Q'TY 用量	NOTE 備註	
1	32100-CGV-00	REAR ARM	1	擺動臂	
2	32115-CGV-00	BUSH	1	擺動臂軸襯左	
3	32116-CGV-00	BUSH	1	擺動臂軸襯右	
4	32118-RAM-00	COVER, THRUST	2	擺動臂塵封蓋	
5	32119-RAM-00	OIL SEAL	2	擺動臂防塵封	
6	32160-RAM-00	SEAL, GUARD	1	鏈條導環	
7	32165-CGV-00	SUPPORT, CHAIN	1	鏈條支持塊	
8	32166-CGV-00	WASHER	0	鏈條支持塊墊塊	
	32166-CGV-00	WASHER	2	鏈條支持塊墊塊	認證
9	32181-CGV-00	CONNECTING ARM	1	連接臂	
10	32186-CGV-00	TRANSFER ARM	1	轉接臂	
11	32190-CGV-00	COVER	1	下護蓋	
12	41189-CFS-00	STRG LOWER	1	導線環	
13	93110-18243	OIL SEAL KC 18*24*3	4	油封	
14	93110-20264	OIL SEAL KC 20*26*4	4	油封	
15	93110-22284	OIL SEAL TC 22*28*4	2	油封	
16	93310-182416	NEEDLE BEARING HK-1816	4	滾針軸承	
17	93310-202616	NEEDLE BEARING HK-2016	3	滾針軸承	
18	93310-222820	NEEDLE BEARING HK-2220	4	滾針軸承	
19	93510-121869	BUSH	1	軸襯	
20	93510-121882	BUSH	1	軸襯	
21	93510-122030	BUSH	1	軸襯	

十六、REAR ARM 擺動臂



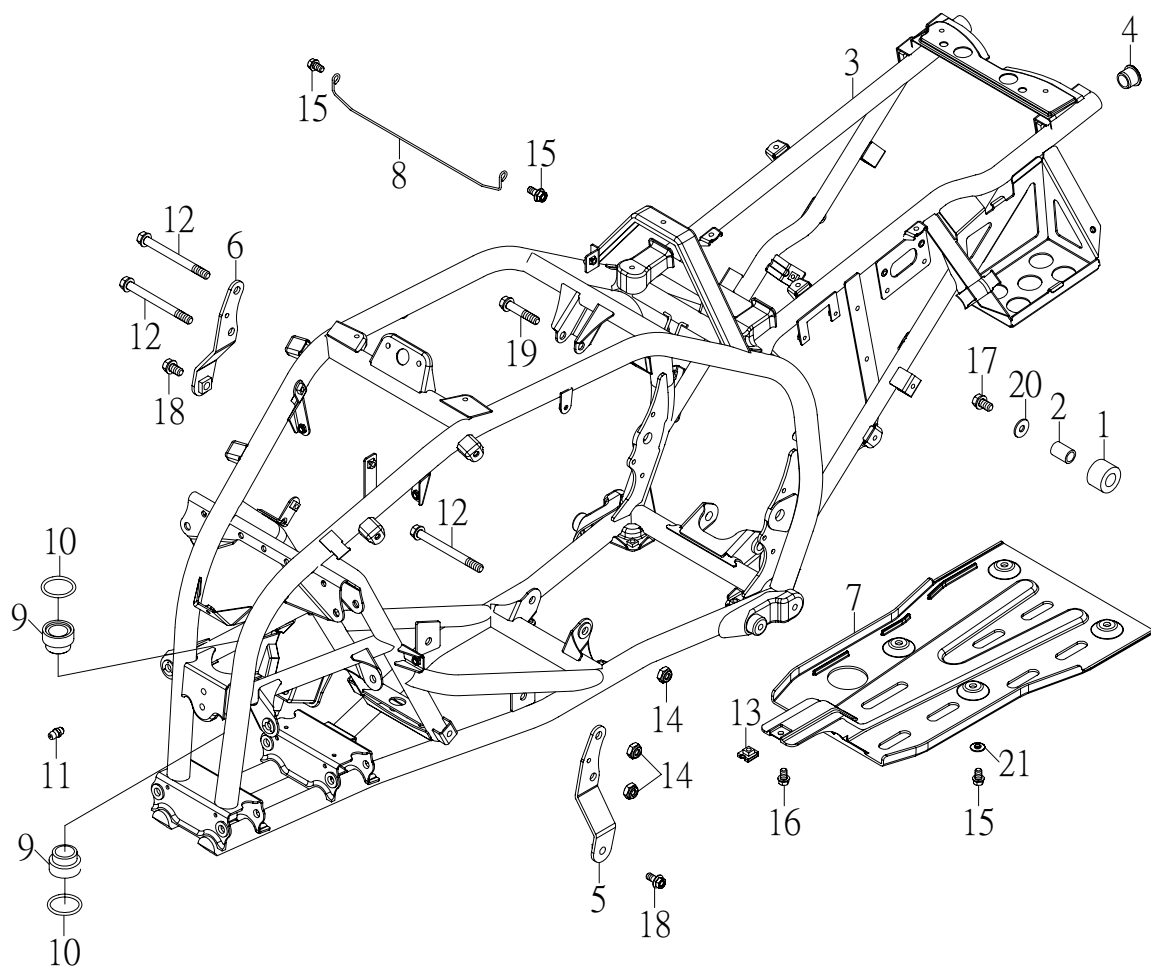
NO.	PARTS NO.	PARTS NAME	Q'TY	NOTE
項目	零件號碼	零件名稱	用量	備註
22	93510-122048	BUSH	1	軸襯
23	94610-12114-B	BOLT, FLANGE	1	連接臂固定軸
24	94610-15258-B	SHAFT, PIVOT	1	擺動臂軸
25	94710-06016-C	BOLT, FLANGE	4	置物箱固定螺栓
26	95301-121713-B	NUT, LOCK	3	止鬆螺帽
27	95301-142212-B	NUT, LOCK 14MM	1	止鬆螺帽
28	95311-101710-B	NUT, NYLON	2	尼龍螺帽
29	96218-06012-B	BOLT, HEXAGON WITH WASHER	1	六角螺栓附墊圈
30	96318-06015-G	SCREW, PAN HEAD	2	十字孔頭螺絲
	96318-06025-G	SCREW, PAN HEAD	2	十字孔頭螺絲
31	96414-10065-B	BOLT, FLANGE	2	凸緣螺栓
32	96414-12072-B	BOLT, FLANGE	1	凸緣螺栓
33	96414-12095-B	BOLT, FLANGE	1	凸緣螺栓
34	97201-102020-B	WASHER, PLATE	4	平面墊圈
35	97201-142820-B	WASHER, PLATE 14.2*28.4*2.0	1	平面墊圈
36	97201-243820	WASHER, PLATE	2	平面墊圈

十七、REAR SUSPENSION 後懸吊系統



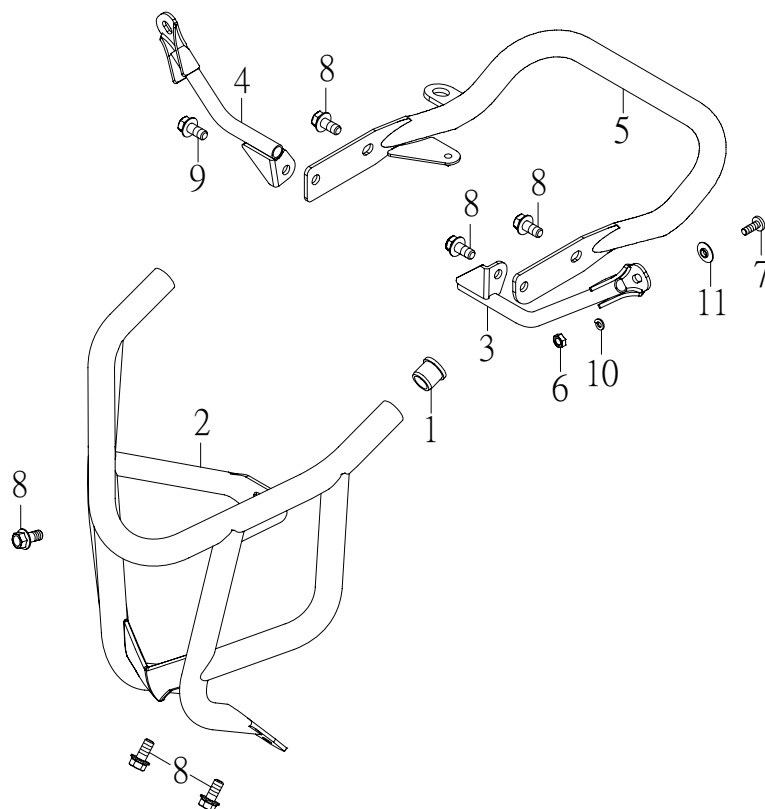
NO.	PARTS NO.	PARTS NAME		Q'TY	NOTE
項目	零件號碼	零件名稱		用量	備註
1	32210-CGV-00	SHOCK ABSORBER ASS'Y, REAR	後緩衝器總成	1	
2	32231-CGV-00	WASHER	後緩衝器墊圈	2	
3	90240-23020-B	COTTER PIN 2.3*20	開口銷	1	
4	93110-18243	OIL SEAL KC 18*24*3	油封	2	
5	93310-182416	NEEDLE BEARING HK-1816	滾針軸承	1	
6	93510-121832	BUSH	軸襯	1	
7	94716-12051-B	BOLT, KEYHOLE	栓孔螺栓	1	
8	95301-121713-B	NUT, LOCK	止鬆螺帽	1	
9	95321-121710-B	NUT, CASTLE	有槽螺帽	1	
10	96414-12060-B	BOLT, FLANGE	凸緣螺栓	1	
11	97201-122415-B	WASHER, PLATE	平面墊圈	1	

十八、FRAME 車架



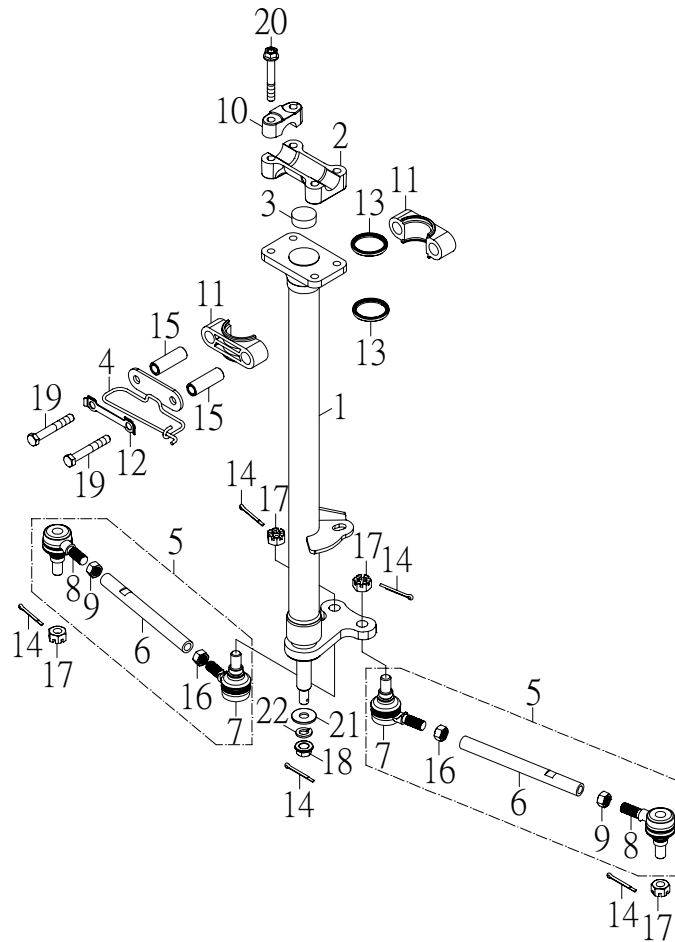
NO. 項目	PARTS NO. 零件號碼	PARTS NAME 零件名稱	Q'TY 用量	NOTE 備註
1	32167-RAM-00	TENSIONER	2	拉緊環
2	32168-RAM-00	BUSH	2	拉緊環軸襯
3	41110-CGV-00	FRAME COMP	1	車架整體
4	41154-RAM-00	PLUG, SPECIAL SHAPE	2	管塞
5	41181-CGV-00L	ENGINE HANGER FRONT	1	引擎前固定座右
6	41181-CGV-00R	ENGINE HANGER FRONT	1	引擎前固定座右
7	41199-CJW-00	FRAME BASEPLATE	1	車架底板
8	42117-CGV-00	CLIP	1	配線夾
9	46412-RAM-00	BUSH, SOLID	2	轉向桿襯套
10	93210-24148	O-RING 2.4*14.8	2	護油圈
11	94340-06010-B	NIPPLE, GREASE M6*P1.0	1	黃油嘴
12	94610-10113-B	BOLT, FLANGE	3	吊架固定軸
13	95101-061820-C	NUT, SPRING	1	U型板螺帽
14	95311-101710-B	NUT, NYLON	4	尼龍螺帽
15	96414-06012-B	BOLT, FLANGE	6	凸緣螺栓
16	96414-06016-B	BOLT, FLANGE	1	凸緣螺栓
17	96414-08012-B	BOLT, FLANGE	2	凸緣螺栓
18	96414-10016-B	BOLT, FLANGE	2	凸緣螺栓
19	96414-10047-C	BOLT, FLANGE	1	凸緣螺栓
20	97201-082420-B	WASHER, PLATE 8.7*24*2.0	2	平面墊圈
21	97321-061825-G	WASHER, FLANGE	4	凸緣墊圈

十九、GUARD 保護桿



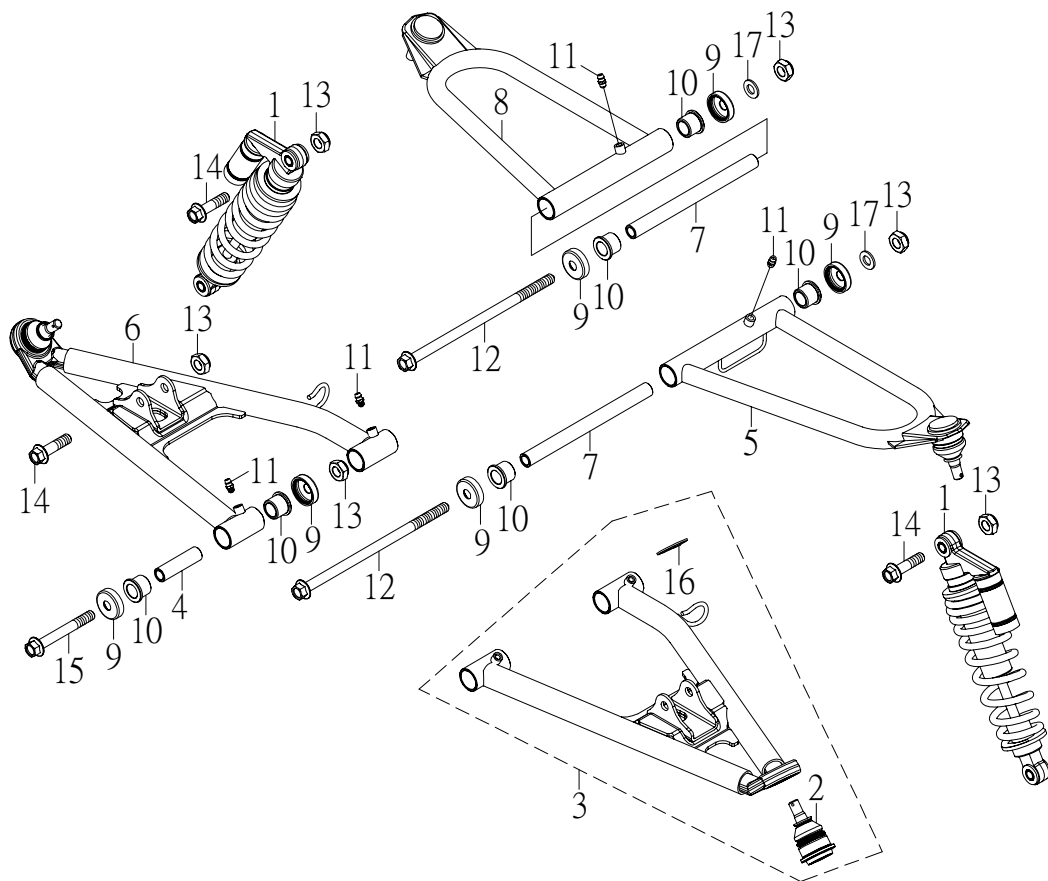
NO.	PARTS NO.	PARTS NAME		Q'TY	NOTE
項目	零件號碼	零件名稱		用量	備註
1	41154-JOW-00	PLUG, SPECIAL SHAPE	管塞	2	
2	41601-CGW-00	SHIELD, FRONT	前保護桿	1	
3	51175-CGW-00	STAY COVER, L	後蓋左固定座	1	
4	51176-CGW-00	STAY COVER, R	後蓋右固定座	1	
5	52850-CEW-00	SHIELD, REAR	後保護桿	1	
6	95201-061005-B	NUT, HEXAGON	六角螺帽	2	
7	96318-06020-G	SCREW, PAN HEAD	十字孔頭螺絲	2	
8	96414-08016-B	BOLT, FLANGE	凸緣螺栓	6	
9	96414-08020-B	BOLT, FLANGE	凸緣螺栓	1	
10	97301-061215-B	WASHER, SPRING	彈簧墊圈	2	
11	97321-061825-G	WASHER, FLANGE	凸緣墊圈	2	

二十、STEERING 轉向裝置



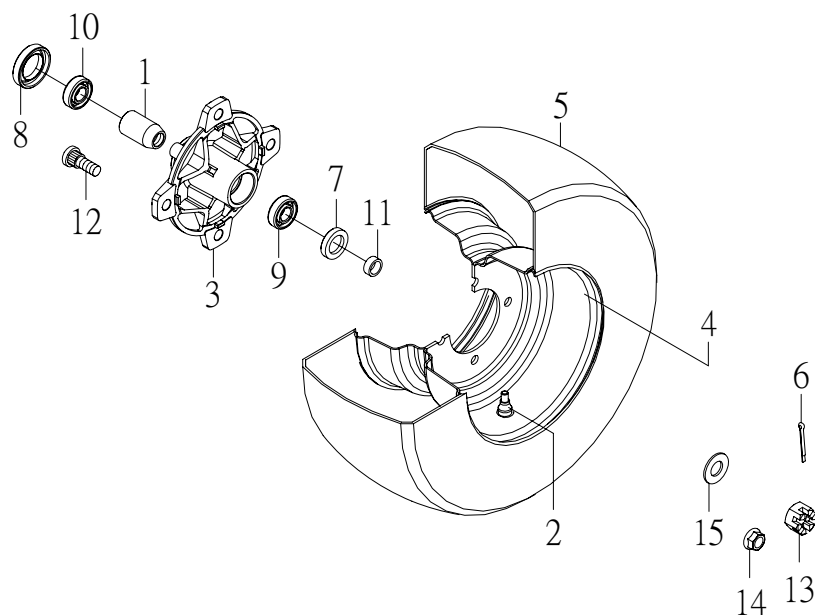
NO.	PARTS NO.	PARTS NAME	Q'TY	NOTE
項目	零件號碼	零件名稱	用量	備註
1	42101-CGV-00	COLUMN, STEERING	1	轉向桿
2	42106-SK9-00	BRIDGE, TOP	1	頂樑
3	42111-RAM-00	PLUG, TAPER	1	塞子
4	42118-AAM-00	BRACKET, STRG LOWER	1	導線環
5	42140-CGV-00	ROD, TIE ASS'Y	2	連桿總成
6	42141-CGV-00	ROD, TIE	2	連桿
7	42142-RAM-00	JOINT, UNIVERSAL 1	2	萬向接頭 內
8	42143-RAM-00	JOINT, UNIVERSAL 2	2	萬向接頭 外
9	42146-RAM-00	NUT	2	連桿螺帽
10	46125-RAM-00	HOLDER, HANDLE UPPER	2	把手上固定座
11	46411-RAM-00	BEARING, STEERING	2	轉向桿固定座
12	46416-RAM-00	WASHER, LOCK	1	制止片
13	46417-RAM-00	OIL SEAL	2	轉向桿封圈
14	90240-23020-B	COTTER PIN 2.3*20	5	開口銷
15	93510-081442-C	COLLAR	2	轉向桿座隔管
16	95201-101408-C	NUT, HEXAGON	2	六角螺帽
17	95321-101710-C	NUT, CASTLE	4	有槽螺帽
18	95401-101409-B	NUT, FLANGE	1	凸緣螺帽
19	96210-08060-B	BOLT, HEXAGON	2	六角螺栓
20	96414-08050-B	BOLT, FLANGE	4	凸緣螺栓
21	97201-102620-B	WASHER, PLATE	1	平面墊圈
22	97301-101720-B	WASHER, SPRING	1	彈簧墊圈

二十一、FRONT SUSPENSION 前懸吊系統



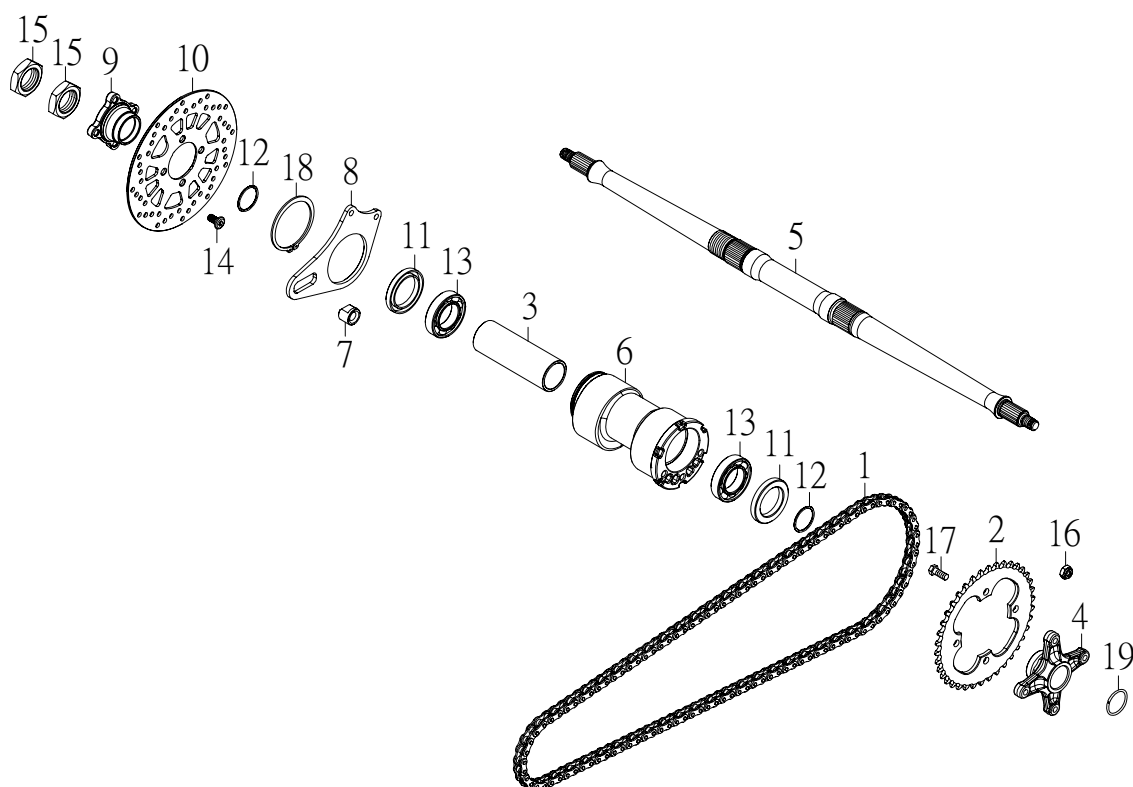
NO. 項目	PARTS NO. 零件號碼	PARTS NAME 零件名稱	Q'TY 用量	NOTE 備註
1	42126-CGV-00	SHOCK ABSORBER ASS'Y	2	前緩衝器總成
2	42150-CGW-00	UNIVERSAL JOINT COMP	2	下萬向接頭組
3	42161-CGV-00	FRT.LWR, ARM LEFT	1	左前下搖臂
4	42163-RAM-00	COLLAR	4	下搖臂軸襯
5	42166-CGV-00	FRT.UPPER, ARM LEFT	1	左前上搖臂
6	42171-CGV-00	FRT.LWR, ARM RIGHT	1	右前下搖臂
7	42173-RAM-00	COLLAR	2	上搖臂軸襯
8	42176-CGV-00	FRT.UPPER, ARM RIGHT	1	右前上搖臂
9	42183-RAM-00	COVER, THRUST	12	塵封蓋
10	93330-152118	BUSH, SOLID	12	羅龍滑動軸承
11	94340-06010-B	NIPPLE, GREASE M6*P1.0	6	黃油嘴
12	94610-10208-B	SHAFT, PIVOT	2	上搖臂固定軸
13	95311-101710-B	NUT, NYLON	10	尼龍螺帽
14	96414-10055-B	BOLT, FLANGE	4	凸緣螺栓
15	96414-10080-B	BOLT, FLANGE	4	凸緣螺栓
16	97010-30015-K	CIRCLIP	2	C型扣環
17	97201-102020-B	WASHER, PLATE 10.5*20*2	2	平面墊圈

二十二、FRONT WHEEL 前輪



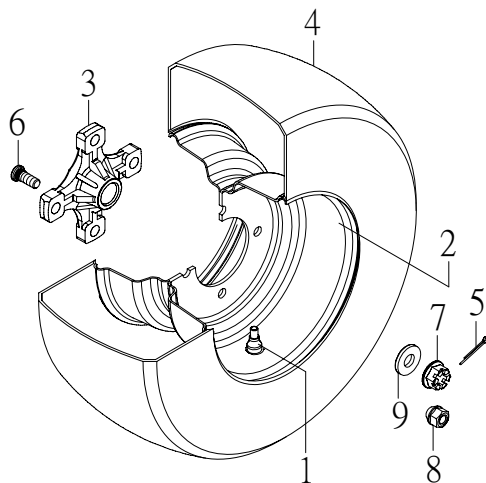
NO.	PARTS NO.	PARTS NAME	Q'TY	NOTE
項目	零件號碼	零件名稱	用量	備註
1	42515-RAM-00	SPACER, BEARING	2	
2	42570-CBW-00	VALVE, RIM	2	鋁圈用
	42570-RAM-00	VALVE, RIM	2	
3	42581-RAM-01	HUB, FRONT	2	
4	42582-CBW-02	WHEEL, FRONT AT10*5.5AT	2	鋁圈
	42582-RAM-00	WHEEL, FRONT AT10*5.5AT	2	
5	42590-CEW-01	TIRE, FRONT AT21*7-10 K532F 25N	2	
6	90240-29025-B	COTTER PIN 2.9*25	2	
7	93110-22357	OIL SEAL TC 22*35*7	2	
8	93110-26427	OIL SEAL TC26*42*7/10	2	
9	93320-153511S	BALL BEARING 6202 CS05/2A	2	
10	93320-204212M	BALL BEARING 6004CM/2A	2	
11	93510-152209-C	COLLAR	2	
12	94710-10037-C	BOLT, RIBBED NECK	8	鋁圈用
	94710-10032-C	BOLT, RIBBED NECK	8	
13	95321-142215-C	NUT, CASTLE	2	
14	95801-101718-C	LOCK NUT, FLANGE	8	鋁圈用
	95401-101409-C	NUT, FLANGE	8	
15	97201-142820-C	WASHER, PLATE 14.2*28.4*2	2	

二十三、HUB, REAR 後輪轂



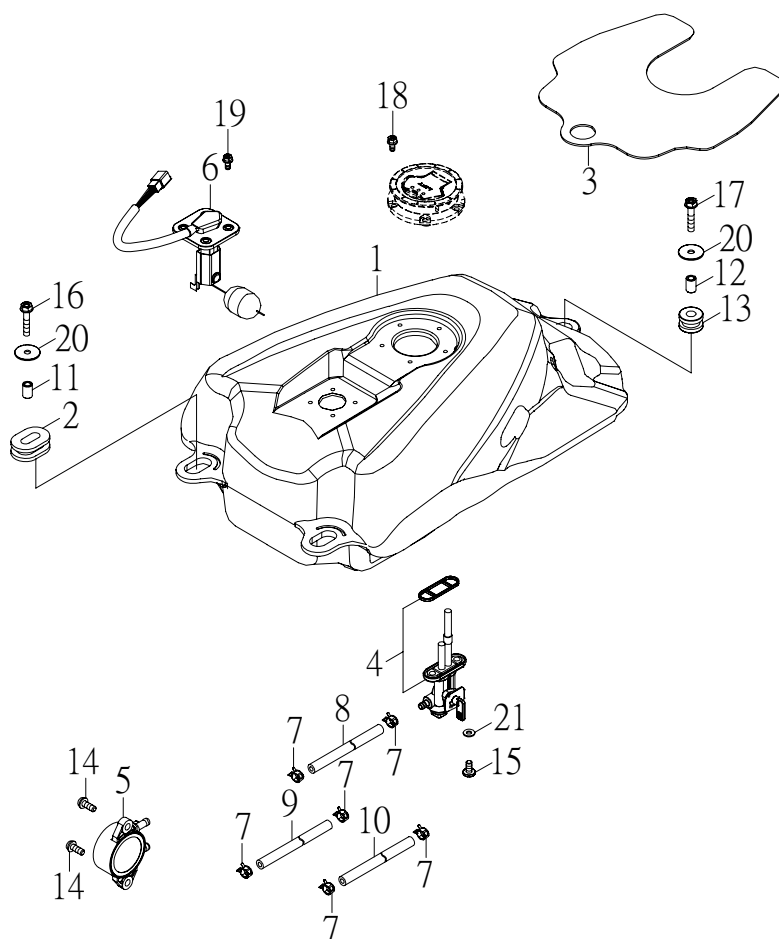
NO.	PARTS NO.	PARTS NAME	Q'TY	NOTE
項目	零件號碼	零件名稱	用量	備註
1	25743-CGV-00	CHAIN 520 UO 94L	1	
	25743-CGV-01	CHAIN 520 UO 92L	1	E 認證
2	42812-CGV-00	SPROCKET, DRIVEN 520-38T	1	
	42812-CGV-01	SPROCKET, DRIVEN 520-36T	1	使用92L鏈條
	42812-CGV-02	SPROCKET, DRIVEN 520-34T	1	E 認證
3	42815-CGV-00	SPACER, BEARING	1	
4	42821-CGV-01	DRIVE SPROCKET BASE	1	
5	42835-CGV-01	AXLE, WHEEL	1	
6	42881-CGV-00	HUB, REAR	1	
7	45809-CGV-00	BUSHING, CALIPER	1	
8	45810-CGV-00	BRACKET, CALIPER	1	
9	45830-CGV-01	BRACKET, DISC	1	
10	45831-RAM-00	DISC, BRAKE	1	
11	93110-50688	OIL SEAL TC 50*68*8	2	
12	93210-25350	O-RING 2.5*35	2	
13	93320-406815	BALL BEARING 6008/2A	2	
14	94706-08017-B	BOLT, BUTTON	4	
15	95201-365014-C	NUT, HEXAGON	2	
16	95311-101710-B	NUT, NYLON	4	
17	96210-10032-B	BOLT, HEXAGON	4	
18	97010-78025-K	CIRCLE	1	
19	97050-30040-C	CIRCLE	1	

二十四、REAR WHEEL 後輪



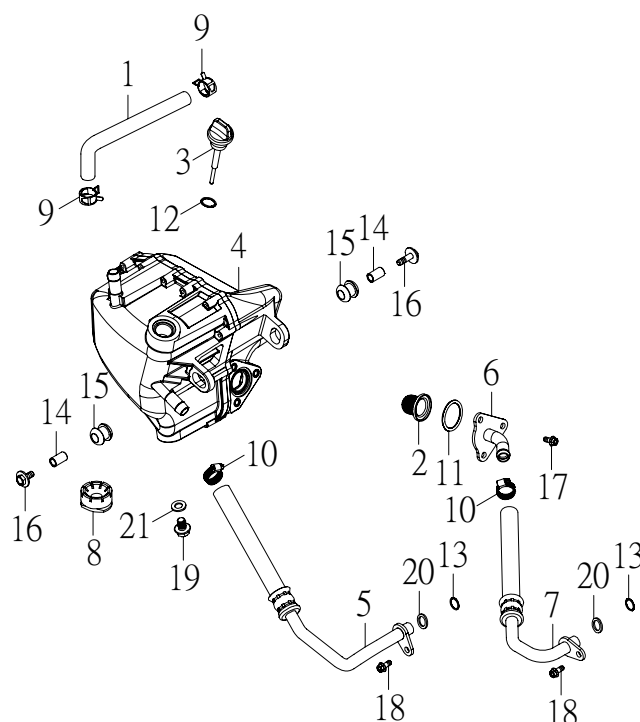
NO.	PARTS NO.	PARTS NAME	Q'TY	NOTE
項目	零件號碼	零件名稱	用量	備註
1	42570-CBW-00	VALVE, RIM	2	
	42570-RAM-00	VALVE, RIM	2	
2	42882-CGV-00	WHEEL, REAR 9*8	2	同一
	42882-CGV-01	WHEEL, REAR 9*8.5	2	
3	42885-CBT-00	COLLAR, WHEEL	2	
4	42890-CGV-00	TIRE, REAR AT 20*11-9 K533 43N	2	
5	90240-37028-B	COTTER PIN	2	
6	94710-10037-C	BOLT, RIBBED NECK	8	
7	95326-162415-C	NUT, CASTLE FLANGE	2	
8	95801-101718-C	LOCK NUT, FLANGE	8	
9	97201-163840-C	WASHER, PLATE	2	

二十五、FUEL TANK 油箱



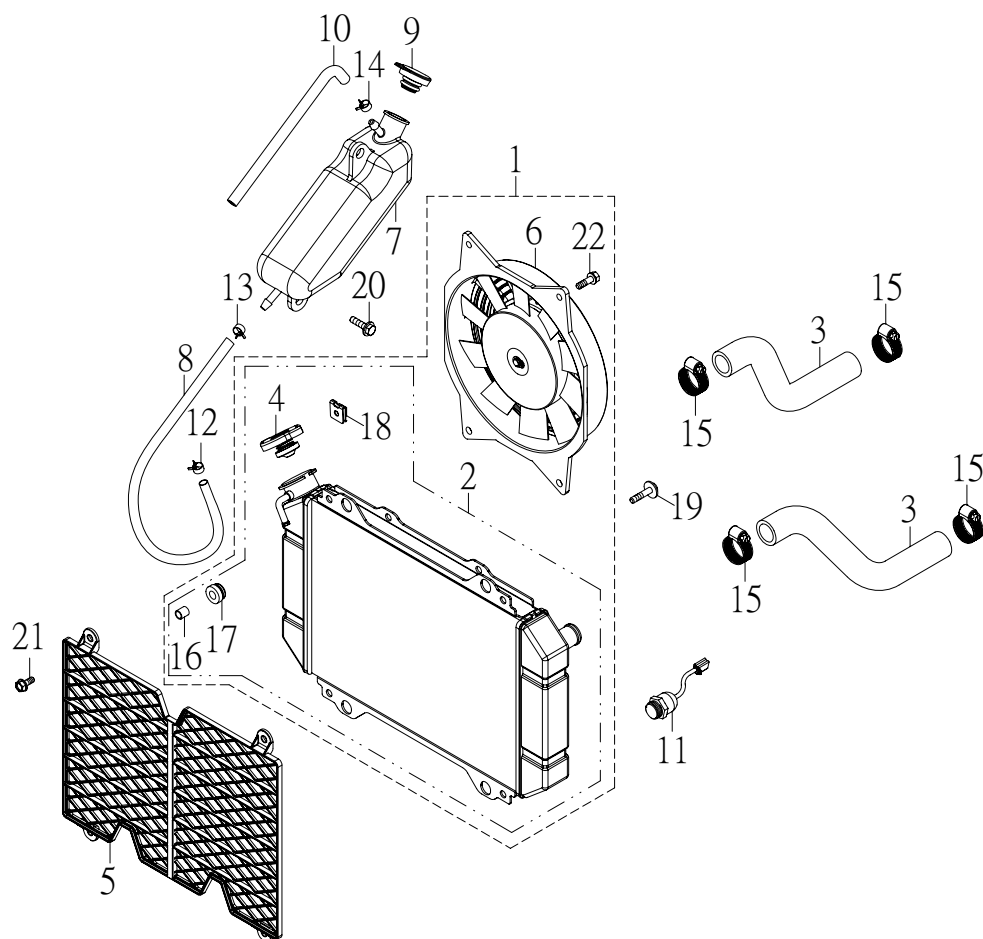
NO.	PARTS NO.	PARTS NAME	Q'TY	NOTE
項目	零件號碼	零件名稱	用量	備註
1	43110-CGV-00	FUEL TANK	1	汽油箱
2	43151-RAM-00	GROMMET F	2	油箱套環 前
3	43154-CGV-00	GUARD	1	保護板
4	43500-CBT-00	FUEL COCK ASS'Y	1	油杯
5	43550-CGV-00	FUEL PUMP	1	汽油泵
6	62770-CEW-00	SENDER UNIT ASSEMBLY	1	汽油油面感應器
7	90220-08100-B	CLIP	6	板型管夾
8	90310-60210	HOSE 6*210	1	汽油管
9	90310-60520	HOSE 6*520	1	負壓管
10	90310-60650	HOSE 6*650	1	汽油管
11	93510-061015-B	COLLAR F	2	油箱隔管 前
12	93510-061021-B	COLLAR R	1	油箱隔管 後
13	93580-102416	GROMMET R	1	油箱套環 後
14	96312-06020-C	SCREW, PAN HEAD	2	十字孔頭螺絲
15	96318-06012-G	SCREW, PAN HEAD	2	十字孔頭螺絲
16	96414-06025-B	BOLT, FLANGE	2	凸緣螺栓
17	96414-06032-B	BOLT, FLANGE	1	凸緣螺栓
18	96612-05012-B	BOLT, HEXAGON WITH WASHER	5	六角十字穴螺栓附墊圈
19	96612-05012-C	BOLT, HEXAGON WITH WASHER	4	六角十字穴螺栓附墊圈
20	97201-062220-B	WASHER, PLATE	3	平面墊圈
21	97210-061315	WASHER, PLATE	2	石棉墊圈

二十六、OIL TANK 機油箱



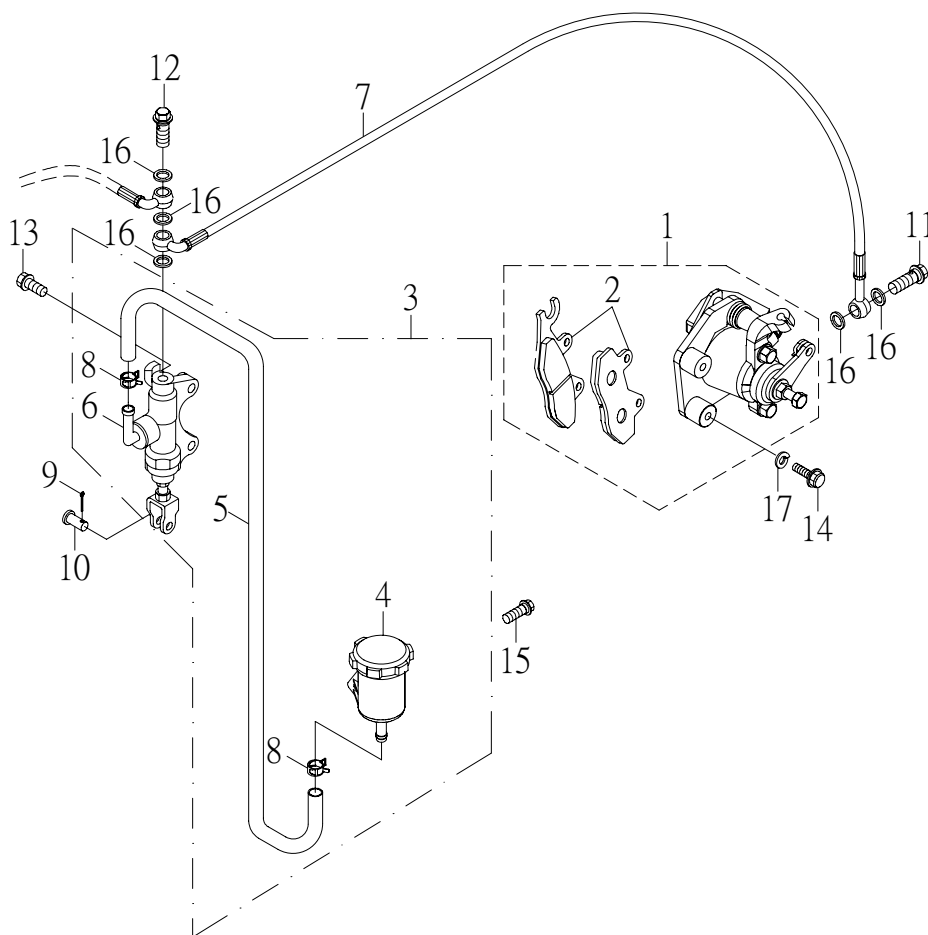
NO. 項目	PARTS NO. 零件號碼	PARTS NAME 零件名稱		Q'TY 用量	NOTE 備註
1	13424-CGV-00	HOSE	機油箱通氣管	1	
2	15536-CHP-00	SCREEN, OIL FILTER	濾油網	1	
3	15563-CGV-00	GAUGE, OIL LEVEL	量油尺	1	
4	43310-CGV-00	OIL TANK	機油箱	1	
5	43320-CGV-00	HOSE, OIL IN	機油箱入油管	1	
6	43323-CGV-00	JOINT, HOSE	出油管接頭	1	
7	43325-CGV-00	HOSE, OIL EX	機油箱出油管	1	
8	52735-KHB-00	RUBBER REAR FENDER	座墊後減震墊	1	
9	90220-12178-C	CLIP 12*17.8	板型管夾	2	
10	90280-080023-B	CLIP HC1 430SS	美式管夾	2	8*Ø13~Ø23
11	9321V-20280	O-RING 2.0*28	護油圈	1	
12	9321V-30180	O-RING 3.0*18	護油圈	1	
13	9321V-35125	O-RING 3.55*12.5	護油圈	2	
14	93510-071017-B	COLLAR	機油箱軸環	2	
15	93580-101919	GROMMET	機油箱套環	2	
16	96218-06025-B	BOLT, HEXAGON WITH WASHER	六角螺栓附墊圈	2	
17	96414-06010-B	BOLT, FLANGE	凸緣螺栓	3	
18	96414-06016-C	BOLT, FLANGE	凸緣螺栓	2	
19	96414-12015-B	BOLT, FLANGE 12*15	凸緣螺栓	1	
20	97221-131830	WASHER, PLASTIC	塑膠墊圈	2	
21	97231-122020	WASHER, ALUMINUM	鋁墊圈	1	

二十七、WATER-COOLING SYSTEM 水冷卻系統



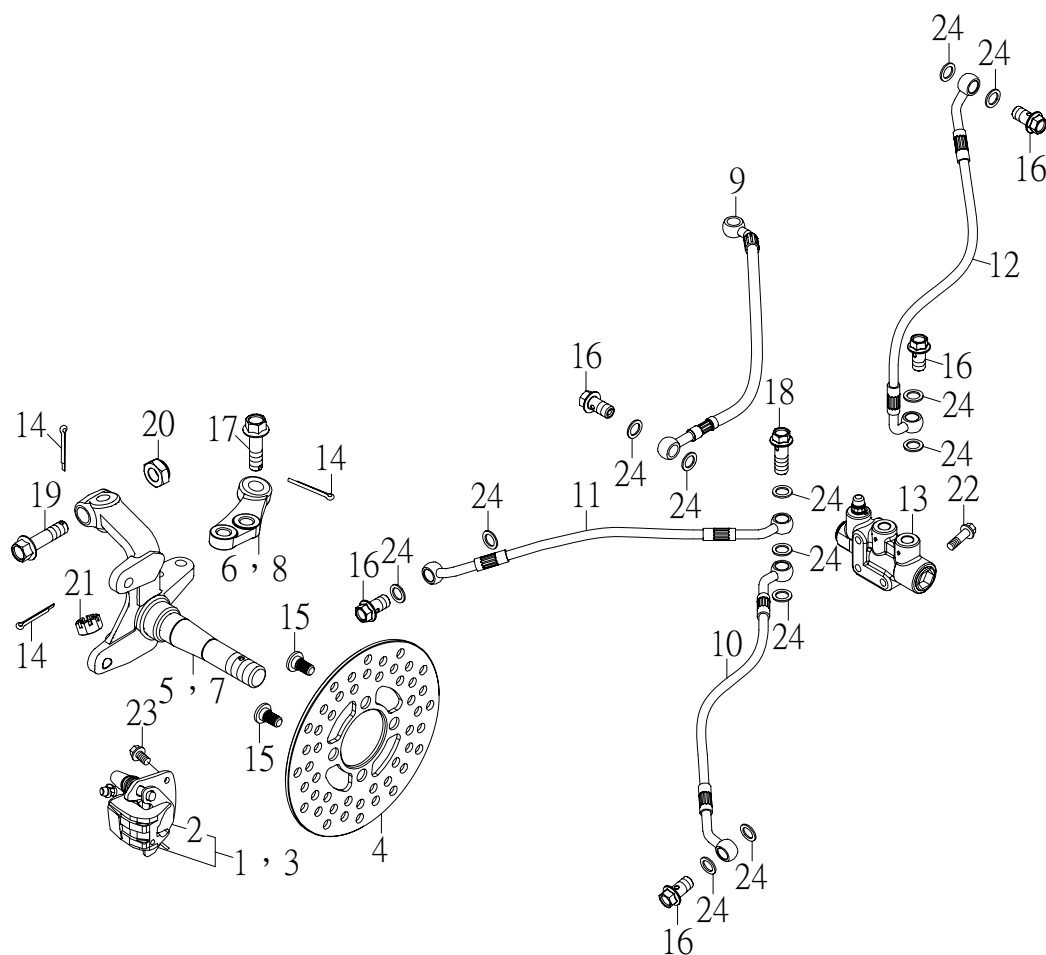
NO.	PARTS NO.	PARTS NAME	Q'TY	NOTE
項目	零件號碼	零件名稱	用量	備註
1	43400-CGV-00	RADIATOR ASS'Y	1	
2	43410-CGV-00	RADIATOR	1	
3	43425-CGV-00	HOSE, WATER PUMP IN	2	
4	43430-CGV-00	RADIATOR CAP	1	
5	43440-CGV-00	RADIATOR DEFEND	1	
6	43450-CGV-00	FAN MOTOR ASS'Y	1	
7	43460-CEE-00	WATER TANK	1	
8	43463-CGV-00	HOSE 1, WATER TANK	1	
9	43466-CEE-00	CAP, WATER TANK	1	
10	43468-CEE-00	HOSE 2, WATER TANK	1	
11	62750-CGV-00	FAN MOTOR SWITCH	1	
12	90220-08100-B	CLIP 8*10	1	
13	90220-08110-B	CLIP 8*11	1	
14	90220-10138-K	CLIP 10*13.8	1	
15	90281-090032-C	CLIP ZHC 430SS	4	9*Ø20~Ø32
16	93510-070910-B	COLLAR 7.5*9.5*10.5	4	
17	93580-091911	GROMMET	4	
18	95101-091320	NUT, SPRING	8	
19	96214-06022-B	BOLT, HEXAGON WITH WASHER	4	
20	96218-06016-B	BOLT, HEXAGON WITH WASHER	2	
21	96414-06012-B	BOLT, FLANGE	4	
22	96614-06018-B	BOLT, HEXAGON WITH WASHER	4	

二十八、REAR BRAKE 後煞車系統



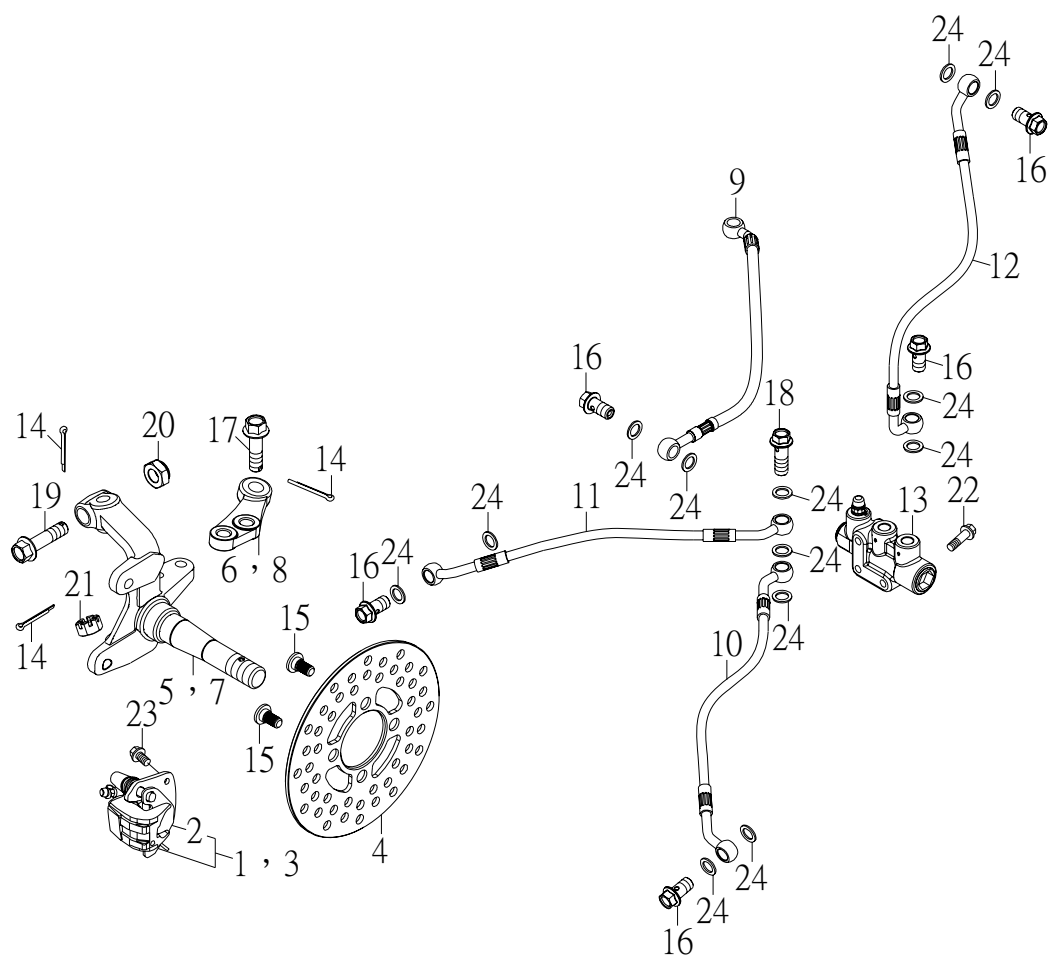
NO.	PARTS NO.	PARTS NAME	Q'TY	NOTE
項目	零件號碼	零件名稱	用量	備註
1	45801-CGV-00	CALIPER ASS'Y	1	卡鉗總成
2	45815-RAM-01	PAD, CALIPER	1	剎車片組
3	45870-CGV-00	MASTER CYLINDER SUB ASS'Y	1	主缸總成
4	45871-CGV-00	RESERVOIR	1	油槽總成
5	45874-CGV-00	HOSE 8*13*380	1	油管
6	45877-RAM-01	CYLINDER KIT, MASTER	1	推進器組
7	61320-CGV-00	HOSE, BRAKE	1	剎車油管
8	90220-80013	CLAMP	2	管夾
9	90240-14016-B	COTTER PIN	1	開口銷
10	94610-06016-B	PIN, CLEVIS	1	帶頭銷
11	94716-10022-G	BOLT, UNION	1	接合螺栓
12	94716-10033-G	BOLT, UNION	1	接合螺栓
13	96414-06022-B	BOLT, FLANGE	2	凸緣螺栓
14	96414-08028-B	BOLT, FLANGE	2	凸緣螺栓
15	96612-05012-B	BOLT, HEXAGON WITH WASHER	1	六角十字穴螺栓附墊圈
16	97230-101512	WASHER, COPPER 10.3*15*1.2	5	銅墊圈
17	97301-081520-B	WASHER, SPRING	2	彈簧墊圈

二十九、KNUCKLE, STEERING 轉向關節座



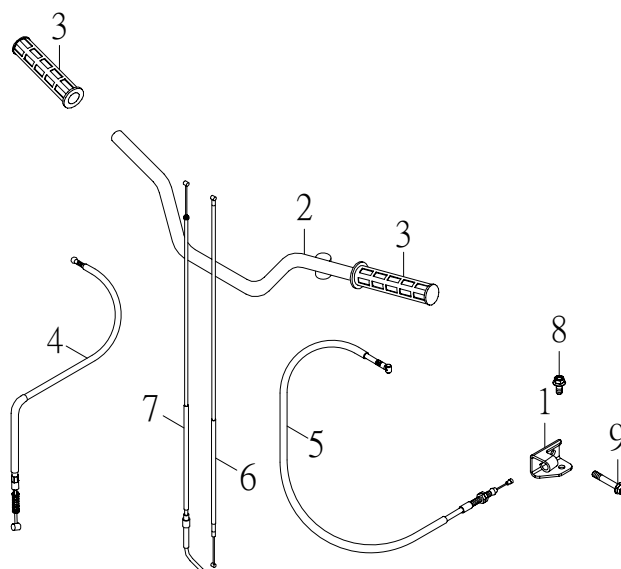
NO.	PARTS NO.	PARTS NAME	Q'TY	NOTE
項目	零件號碼	零件名稱	用量	備註
1	45811-RAM-02	CALIPER ASS'Y, L FRONT	1	左前卡鉗總成
2	45815-RAM-01	PAD, CALIPER	2	剎車片組
3	45821-RAM-02	CALIPER ASS'Y, R FRONT	1	右前卡鉗總成
4	45831-RAM-01	DISK, BRAKE	2	剎車圓盤
5	45861-RAM-01	KNUCKLE, STEERING L	1	左前轉向關節座
6	45862-RAM-00	JOINT, ROD L	1	左前連結片
7	45866-RAM-01	KNUCKLE, STEERING R	1	右前轉向關節座
8	45867-RAM-00	JOINT, ROD R	1	右前連結片
9	61811-CGV-00	HOSE, BRAKE	1	腳剎車油管
10	61812-CJW-01L	HOSE, FRONT BRAKE L	1	左前剎車油管
11	61812-CGV-00R	HOSE, FRONT BRAKE R	1	右前剎車油管
12	61820-CGV-00	HOSE, HANDBRAKE	1	手剎車油管
13	61860-JOW-01	BRAKE SHUNT ASS'Y	1	分流閥組
14	90240-23020-B	COTTER PIN 2.3*20	8	開口銷
15	94706-08017-B	BOLT, BUTTON	8	剎車盤固定螺栓
16	94716-10022-G	BOLT, UNION	5	接合螺栓
17	94716-10030-C	BOLT, KEYHOLE	4	栓孔螺栓
18	94716-10033-G	BOLT, UNION	1	接合螺栓
19	94716-10040-C	BOLT, KEYHOLE	2	栓孔螺栓
20	95311-101710-C	NUT, NYLON	2	尼龍螺帽
21	95321-101710-C	NUT, CASTLE	2	有槽螺帽
22	96414-06035-B	BOLT, FLANGE	2	凸緣螺栓

二十九、KNUCKLE, STEERING 轉向關節座



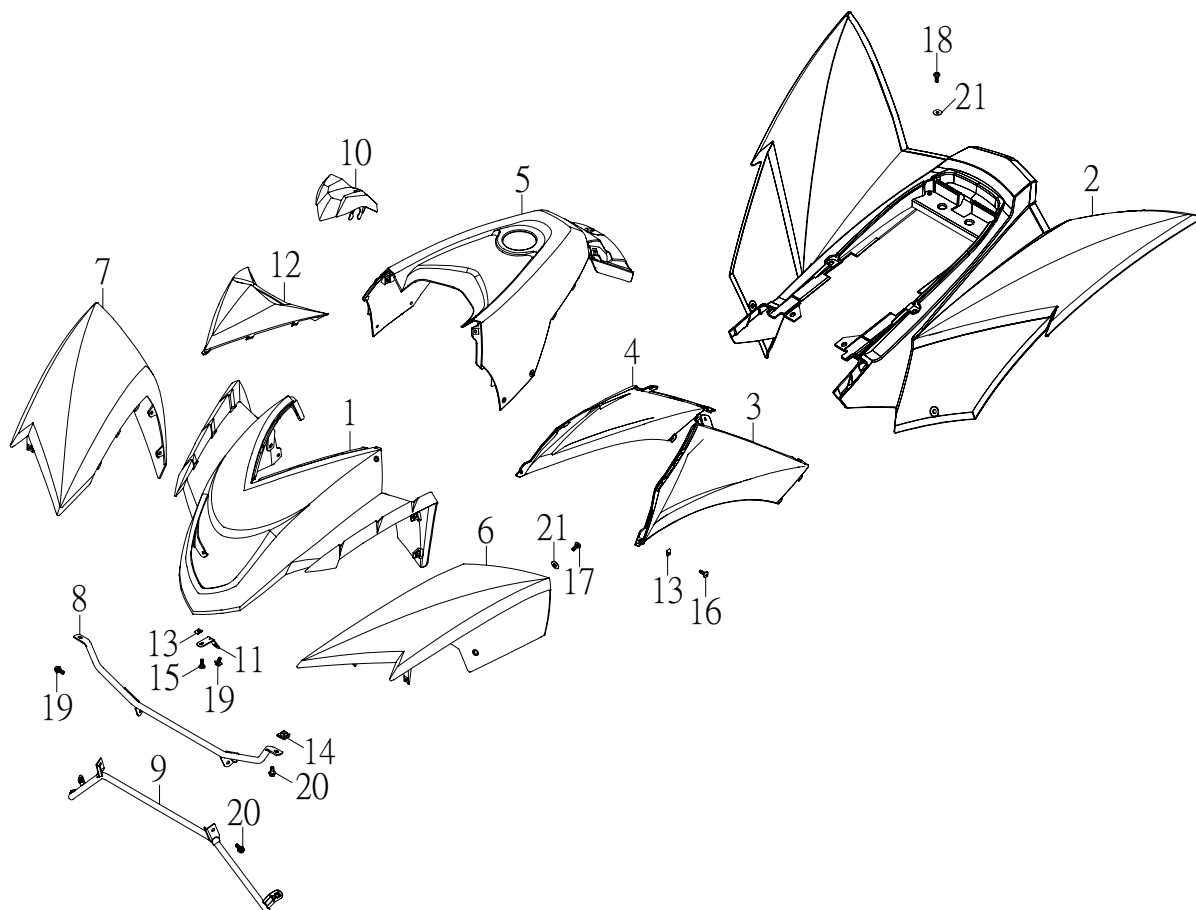
NO.	PARTS NO.	PARTS NAME	Q'TY	NOTE
項目	零件號碼	零件名稱	用量	備註
23	96414-08016-B	BOLT, FLANGE	4	凸緣螺栓
24	97230-101512	WASHER, COPPER	13	銅墊圈

三十、STEERING HANDLE CABLE 轉向把手，鋼索



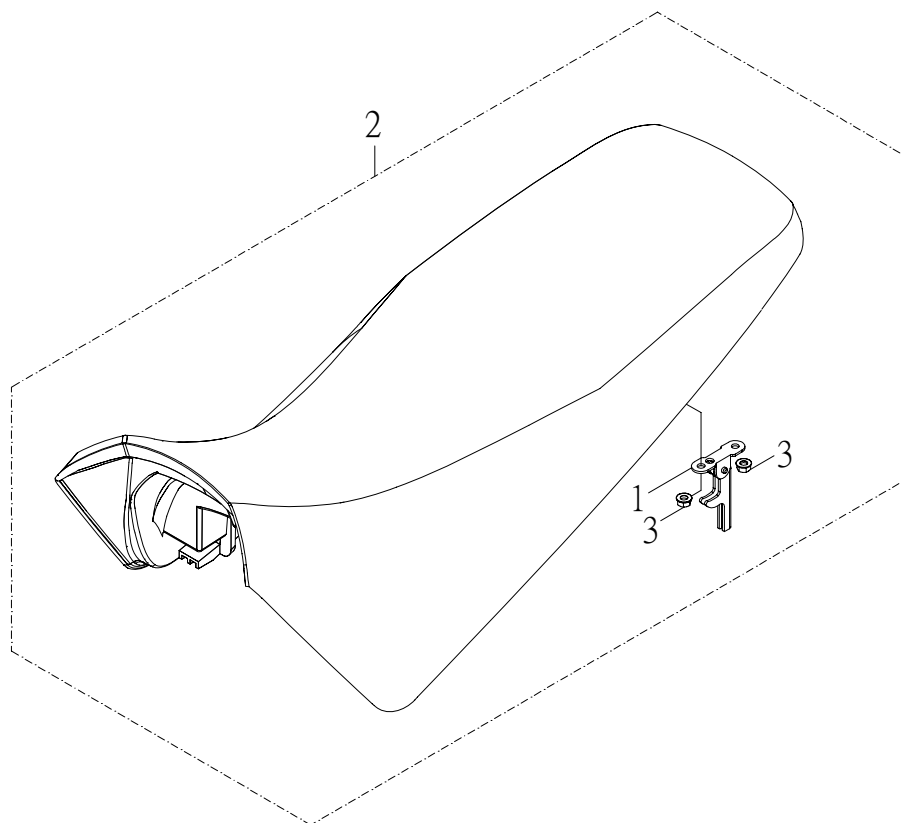
NO.	PARTS NO.	PARTS NAME		Q'TY	NOTE
項目	零件號碼	零件名稱		用量	備註
1	25793-CGV-00	HOLDER, CLUTCH WIRE	離合器導線固定座	1	
2	46110-CJW-00	HANDLEBAR	把手整體	1	
3	46240-RAM-00	GRIP	握把	2	
4	61340-CGV-00	CABLE, HANDBRAKE	手剎車鋼索	1	
5	61420-CGV-00	CABLE, CLUTCH	離合器導線	1	
6	61620-CGV-00	CABLE, THROTTLE	節流鋼索	1	
7	61720-CGV-00	CABLE, CHOKE	阻風導線	1	
8	96411-06016-B	BOLT, FLANGE	凸緣螺栓	1	
9	96411-06050-B	BOLT, FLANGE	凸緣螺栓	1	

三十一、FRONT FENDER 前土除



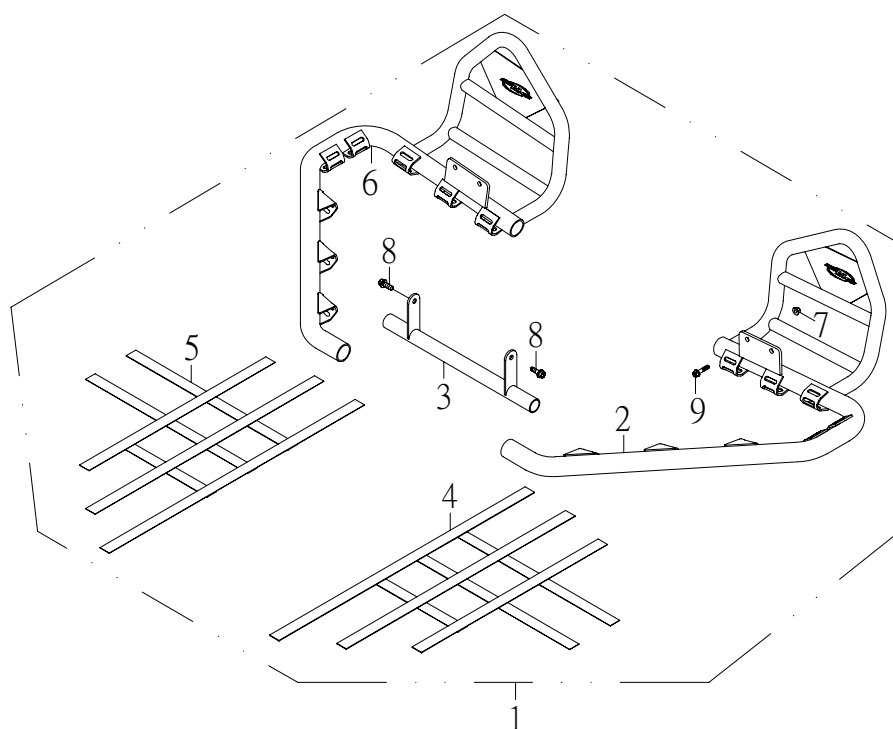
NO.	PARTS NO.	PARTS NAME	Q'TY	NOTE
項目	零件號碼	零件名稱	用量	備註
1	51151-CGW-00	PANEL, FRONT	1	前燈座
2	51171-CGV-00	COVER, SIDE	1	後蓋
3	51172-CGW-00	SIDE COVER L	1	左側蓋
4	51173-CGW-00	SIDE COVER R	1	右側蓋
5	51532-CGV-00	COVER, TOP	1	油箱上蓋
6	51552-CGW-00	FENDER, FRONT L	1	左前土除
7	51553-CGW-00	FENDER, FRONT R	1	右前土除
8	51554-CGV-00	STAY, FENDER UPPER	1	前蓋固定座上
9	51556-CGV-00	STAY, FENDER LOWER	1	前蓋固定座下
10	55213-CGW-00	PROTECTOR, HANDLEBAR	1	把手上蓋
11	55315-STG-00	STAY, HEAD LIGHT	1	前燈固定片
12	55516-CGW-00	HOLDER, SPEEDOMETER	1	速度表固定座
13	95101-05012	NUT, SPRING	21	U型板螺帽
14	95101-061820-C	NUT, SPRING	2	U型板螺帽
15	96108-51216-K	SCREW, TAPPING	1	自攻螺絲
16	96112-51216-K	SCREW, TAPPING	16	自攻螺絲
17	96318-06012-G	SCREW, PAN HEAD	2	十字孔頭螺絲
18	96318-06015-G	SCREW, PAN HEAD	6	十字孔頭螺絲
19	96414-06012-B	BOLT, FLANGE	3	凸緣螺栓
20	96414-06016-B	BOLT, FLANGE	4	凸緣螺栓
21	97321-061825-G	WASHER, FLANGE	8	凸緣墊圈

三十二、SEAT 座墊



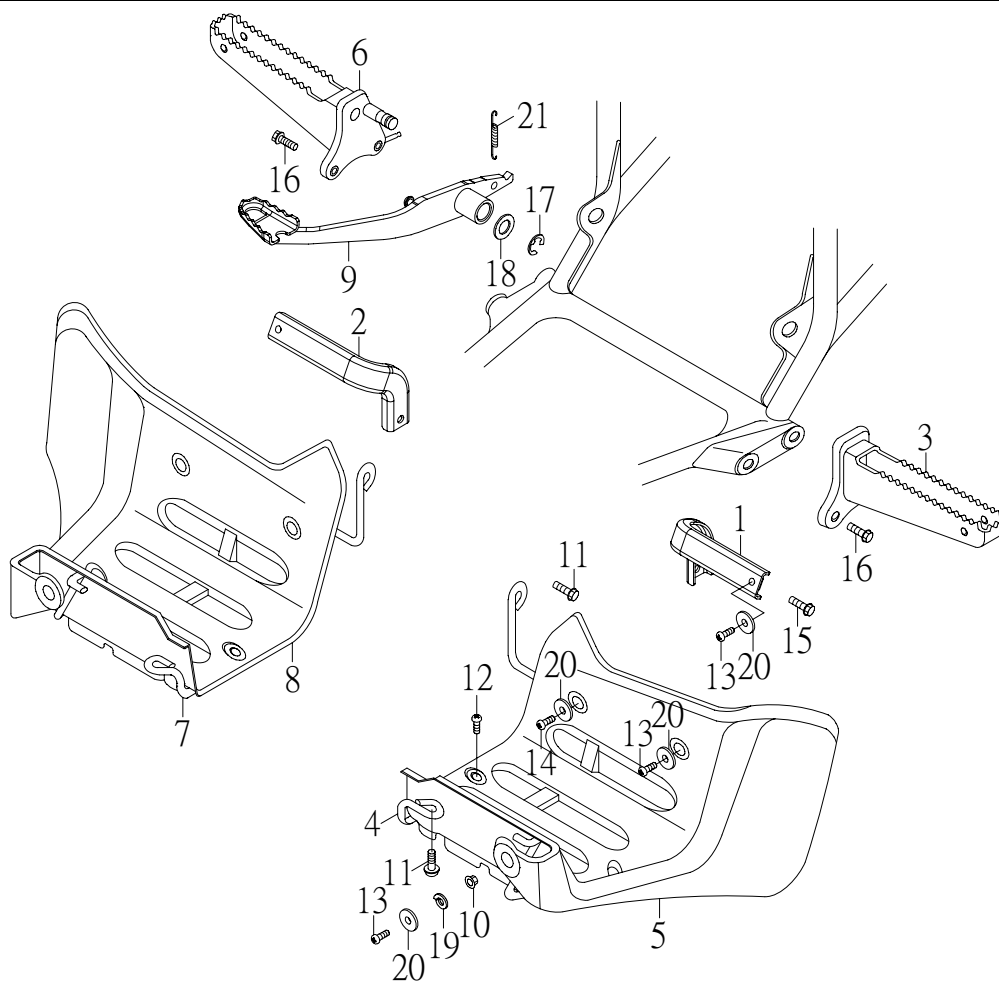
NO.	PARTS NO.	PARTS NAME	Q'TY	NOTE
項目	零件號碼	零件名稱	用量	備註
1	52710-RAM-00	CATCH COMP, SEAT	1	座墊扣鉤組
2	52730-CDW-00	SEAT ASS'Y	1	座墊總成
3	95401-061006-C	NUT, FLANGE	2	凸緣螺帽

三十三、PEDAL BUMPER 踏板保護架



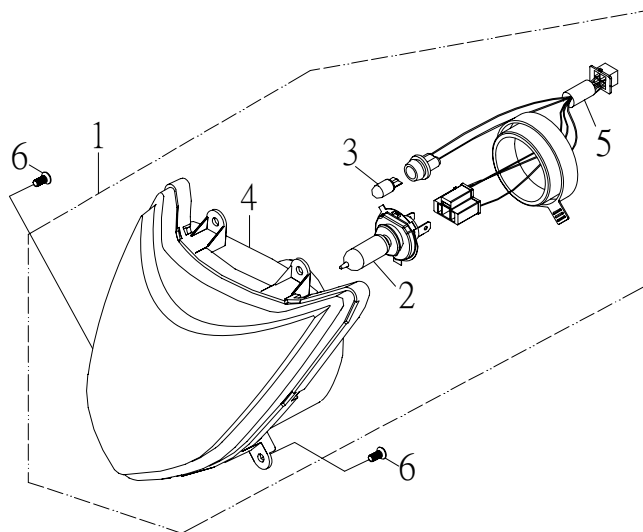
NO.	PARTS NO.	PARTS NAME		Q'TY	NOTE
項目	零件號碼	零件名稱		用量	備註
1	53230-CGV-00	PEDAL BUMPER ASS'Y	踏板保護架總成	1	
2	53237-CGV-00	PEDAL BUMPER LEFT	左踏板保護架	1	
3	53238-CGV-00	PEDAL BUMPER SUPPORT	踏板保護架支持管	1	
4	53239-CGV-00L	PEDAL BUMPER BIND BELT L	踏板保護架束帶左	1	
5	53239-CGV-00R	PEDAL BUMPER BIND BELT R	踏板保護架束帶右	1	
6	53247-CGV-00	PEDAL BUMPER RIGHT	右踏板保護架	1	
7	95401-081208-B	NUT, FLANGE	凸緣螺帽	4	
8	96414-08012-B	BOLT, FLANGE	凸緣螺栓	2	
9	96414-08020-B	BOLT, FLANGE	凸緣螺栓	4	

三十四、STAND FOOTREST 腳踏桿



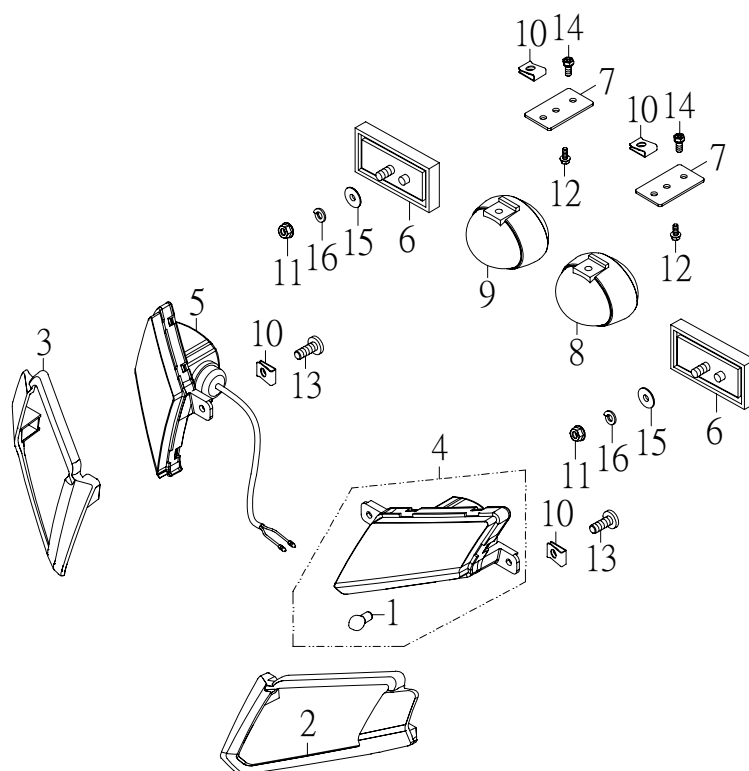
NO. 項目	PARTS NO. 零件號碼	PARTS NAME 零件名稱	Q'TY 用量	NOTE 備註
1	51177-CGW-00	STAY COVER L	1	後蓋前固定座左
2	51178-CGW-00	STAY COVER R	1	後蓋前固定座右
3	53231-CEW-00	FOOTREST L	1	左腳踏桿
4	53233-CEW-00	MUDGUARD STAY	1	左擋泥板架
5	53234-RAM-00	MUDGUARD L	1	左擋泥板
6	53241-CBS-00	FOOTREST R	1	右腳踏桿
7	53243-CEW-00	MUDGUARD STAY	1	右擋泥板架
8	53244-RAM-00	MUDGUARD R	1	右擋泥板
9	53261-CGV-00	PEDAL, BRAKE	1	後剎車踏板
10	95401-061006-B	NUT, FLANGE	2	凸緣螺帽
11	96214-06020-B	BOLT, HEXAGON WITH WASHER	4	六角螺栓附墊圈
12	96318-06012-G	SCREW, PAN HEAD	4	十字孔頭螺絲
13	96318-06015-G	SCREW, PAN HEAD	6	十字孔頭螺絲
14	96318-06020-G	SCREW, PAN HEAD	2	十字孔頭螺絲
15	96414-06012-B	BOLT, FLANGE	2	凸緣螺栓
16	96414-10025-B	BOLT, FLANGE	4	凸緣螺栓
17	97011-12010-B	CIRCLIP 12*1.0	1	E形扣環
18	97201-152620-B	WASHER, PLANE 15.2*25.6*2.0	1	平面墊圈
19	97301-061215-B	WASHER, SPRING	2	彈簧墊圈
20	97321-061825-G	WASHER, FLANGE	8	凸緣墊圈
21	97506-14050-B	SPRING, TENSION	1	後剎車拉伸彈簧

三十五、HEADLIGHT 前燈



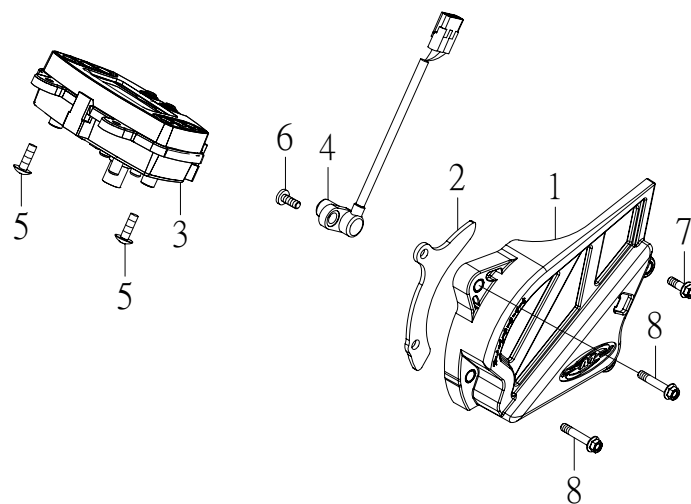
NO.	PARTS NO.	PARTS NAME		Q'TY	NOTE
項目	零件號碼	零件名稱		用量	備註
1	55300-CEW-00	HEAD LIGHT ASS'Y	前燈總成	1	
2	55314-CEW-00	BULB, HEAD LIGHT H4 12V35/35W	前燈燈泡	1	
3	55316-NGF-00	BULB, POSITION LAMP 12V 5W	位置燈燈泡	1	
4	55320-CEW-00	LENS ASS'Y	前燈單元總成	1	
5	55340-CEW-00	SOCKET CORD ASS'Y	燈座總成	1	
6	96112-51216-K	SCREW, TAPPING	自攻螺絲	4	

三十六、FLASHER 方向燈



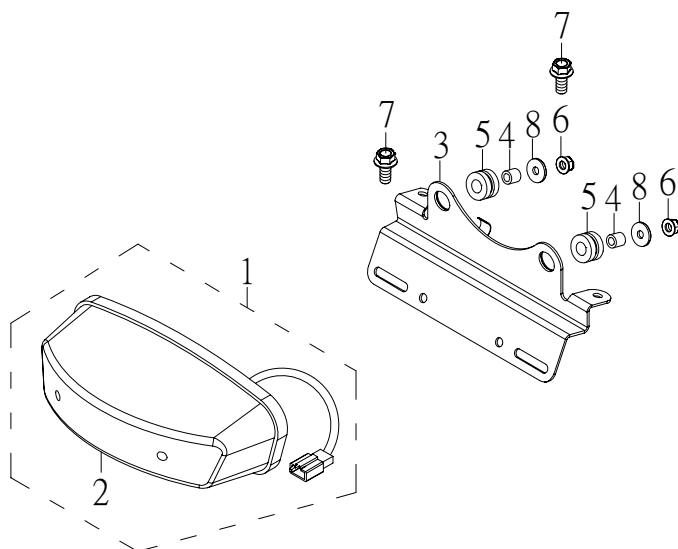
NO.	PARTS NO.	PARTS NAME		Q'TY	NOTE
項目	零件號碼	零件名稱		用量	備註
1	55311-JOW-00	BULB FLASHER RY10W 12V 10W	方向燈泡	2	
2	55336-CGW-00	FLASHER STEADY, L FRT	左前方向燈固定座	1	
3	55346-CGW-00	FLASHER STEADY, R FRT	右前方向燈固定座	1	
4	55350-CGW-00	WINKER ASS'Y, L FRONT	前方向燈組左	1	
5	55360-CGW-00	WINKER ASS'Y, R FRONT	前方向燈組右	1	
6	55722-NCF-01	REFLECTOR	反射片	2	
7	55736-CGW-00	LOCK, WINKER	後方向燈固定座	2	
8	55750-CGV-00B	WINKER ASS'Y, L REAR	後方向燈組左	1	
9	55760-CGV-00B	WINKER ASS'Y, R REAR	後方向燈組右	1	
10	95101-05012	NUT, SPRING	U型板螺帽	8	
11	95401-050805-B	NUT, FLANGE	凸緣螺帽	2	
12	96108-51216-K	SCREW, TAPPING	自攻螺絲	4	
13	96112-51616-K	SCREW, TAPPING	自攻螺絲	4	
14	96612-05012-B	BOLT, HEXAGON WITH WASHER	六角十字穴螺栓附墊圈	2	
15	97201-051610-B	WASHER, PLANE	平面墊圈	2	
16	97301-061215-B	WASHER, SPRING	彈簧墊圈	2	

三十七、SPEEDOMETER 速度表



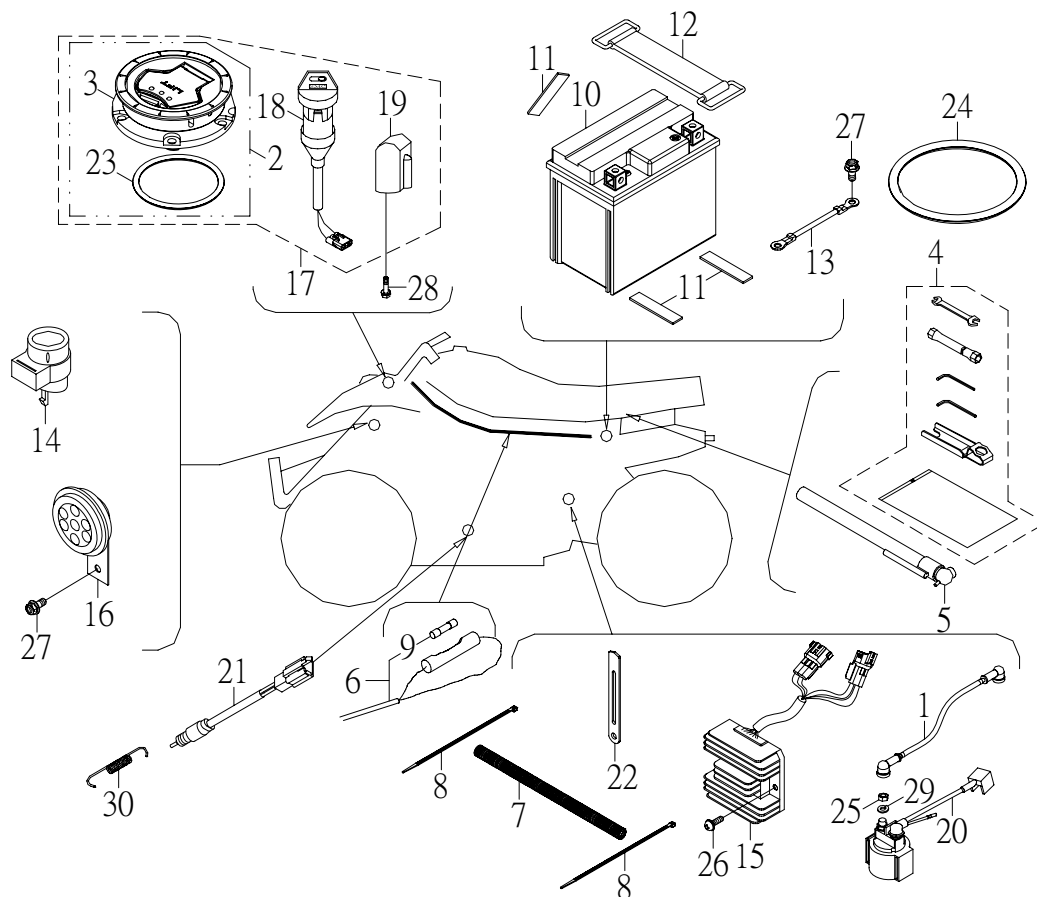
NO. 項目	PARTS NO. 零件號碼	PARTS NAME 零件名稱		Q'TY 用量	NOTE 備註
1	32191-CGV-00	DRIVE CHAIN CASE	鏈條蓋	1	
2	32194-CGV-00	BRACKET, CHAIN CASE	鏈條蓋支架	1	
3	55510-CGV-00	SPEEDOMETER ASS'Y	速度表總成	1	
	55510-CGV-01	SPEEDOMETER ASS'Y	速度表總成	1	E-認證
4	61520-CGV-00	VELOCITY SENSOR	速度感應器	1	
5	96112-51616-K	SCREW, TAPPING	自攻螺絲	3	
6	96310-06012-C	SCREW, PAN HEAD	十字孔頭螺絲	1	
7	96411-06016-B	BOLT, FLANGE	凸緣螺栓	2	
8	96411-06025-B	BOLT, FLANGE	凸緣螺栓	2	

三十八、TAIL LIGHT 後燈



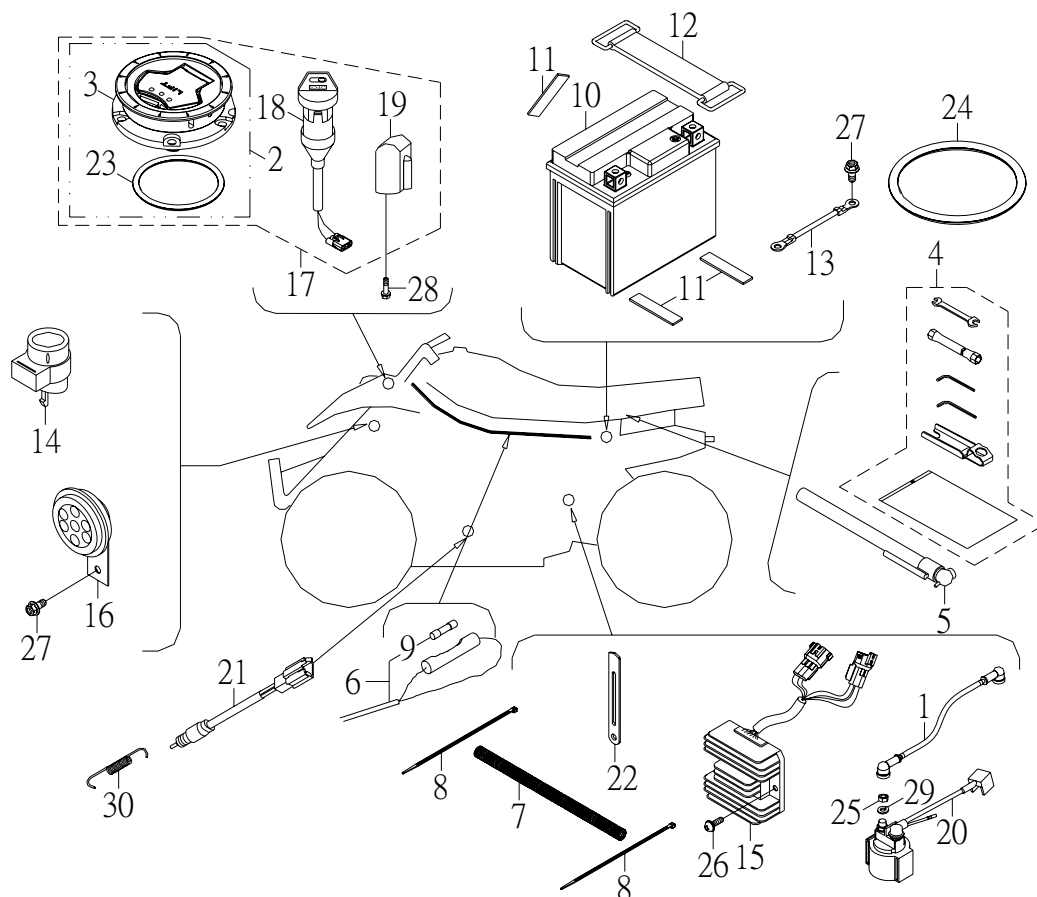
NO.	PARTS NO.	PARTS NAME	Q'TY	NOTE
項目	零件號碼	零件名稱	用量	備註
1	55700-CGV-00B	TAIL LIGHT ASS'Y	1	後燈總成
	55700-CGV-00J	TAIL LIGHT ASS'Y	1	後燈總成
2	55721-CGV-00B	LENS, TAIL LIGHT	1	後燈罩
	55721-CGV-00J	LENS, TAIL LIGHT	1	後燈罩
3	55726-CBW-00	HOLDER, TAIL LIGHT	1	後燈固定座
4	93510-061010	COLLAR	2	牌照板軸環
5	93580-102212	GROMMET	2	牌照板套環
6	95401-061006-B	NUT, FLANGE	2	凸緣螺帽
7	96414-06012-B	BOLT, FLANGE	2	凸緣螺栓
8	97201-061820-B	WASHER, PLATE	2	平面墊圈

三十九、WIRE HARNESS 主電路配線



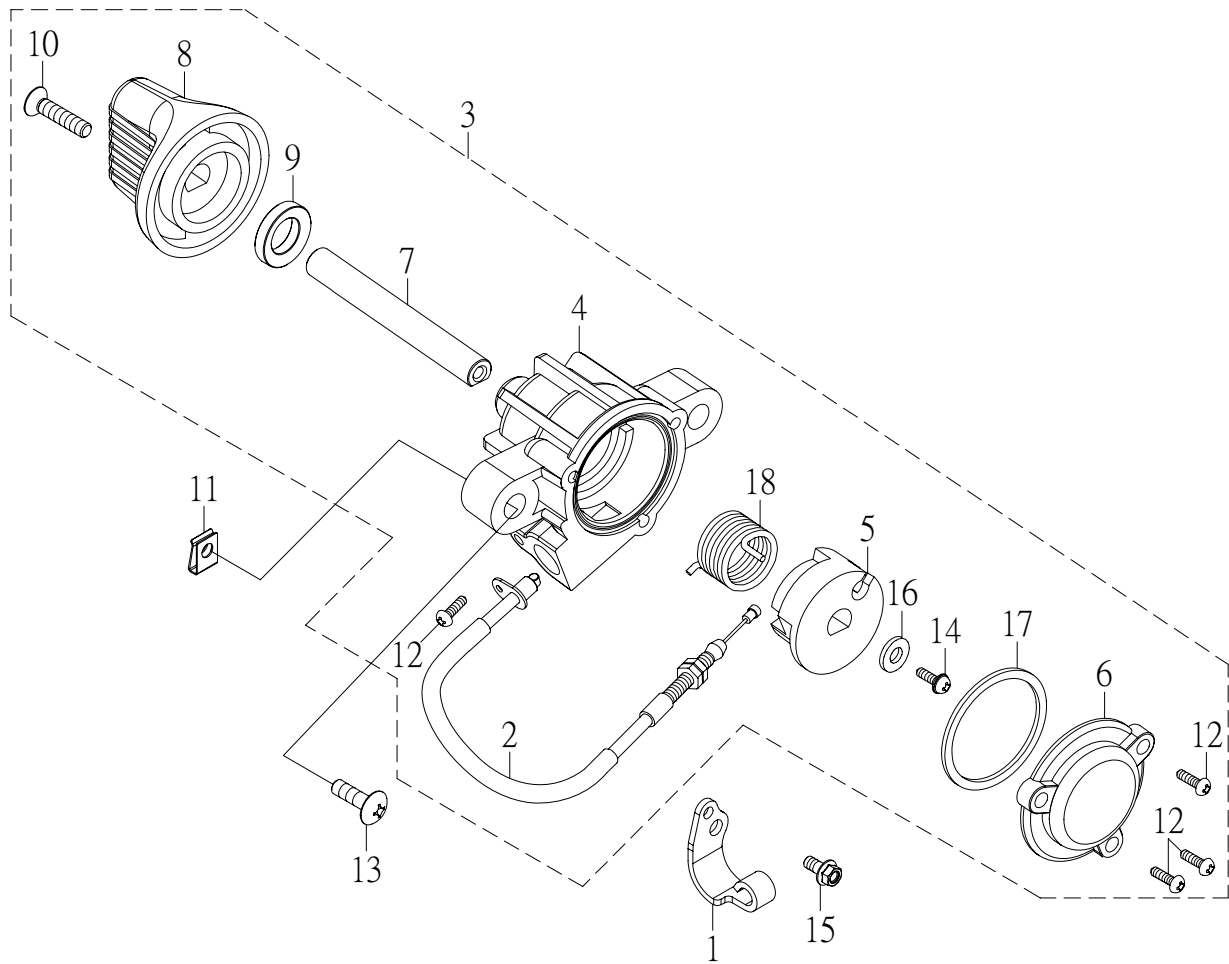
NO.	PARTS NO.	PARTS NAME		Q'TY	NOTE
項目	零件號碼	零件名稱		用量	備註
1	35831-CGV-00	CABLE, STARTER MOTOR	起動馬達導線	1	
2	43102-CGV-00	CAP ASS'Y	汽油箱蓋總成	1	
3	43113-CGV-00	CAP STEADY	汽油箱蓋座	1	
4	56100-CGV-00	TOOL SET	工具包	1	
5	56190-RAM-00	GAUGE, AIR	胎壓計	1	
6	61120-CGV-00	WIRE, HARNESS	主配線總成	1	
7	61134-CGV-00	WAVY TUBE	波浪管	1	
8	61135-SK2-00	BAND, CORD 2.5*100L	束帶	2	
9	61151-CHP-00	FUSE (15A250V)	保險絲	1	
10	62100-MLS-00	BATTERY ASS'Y (YT12A-BS)	蓄電池總成	1	
	62100-MLS-01	BATTERY ASS'Y (GT12A-BS)	蓄電池總成	1	
11	62111-CGV-00	BATTERY PACKING	蓄電池襯墊	3	
12	62112-CHP-00	BAND, BATTERY	電瓶束套	1	
13	62120-RAM-00	CABLE, EARTH	蓄電池接地線	1	
14	62350-CGV-00	FLASHER RELAY ASSEMBLY	方向警報斷續器總成	1	
15	62360-CGV-00	RECTIFIER & REGULATOR COMP	整流穩壓器	1	
16	62370-NAF-00	HORN	喇叭	1	
17	62500-CGV-00	KEY SET	鎖組	1	
18	62501-CGV-00	MAIN SWITCH ASS'Y	主開關總成	1	
19	62503-RAM-00	LOCK COMP, STEERING HANDLE	轉向舵鎖	1	
20	62550-RAM-00	STARTER RELAY SWITCH COMP	起動開關組	1	
21	62980-CHP-00	SWITCH ASS'Y, REAR STOP	剎車燈後置開關	1	

三十九、WIRE HARNESS 主電路配線



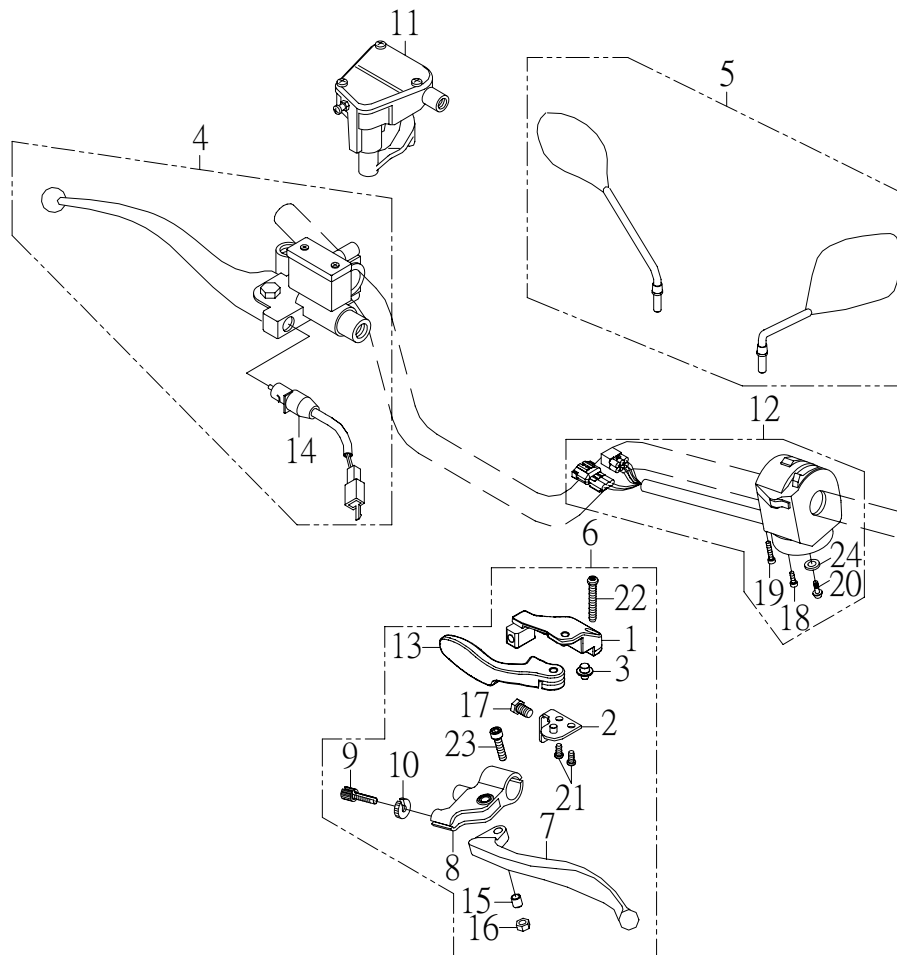
NO.	PARTS NO.	PARTS NAME		Q'TY	NOTE
項目	零件號碼	零件名稱		用量	備註
22	91116-08080-B	FOLDER	導線軟勾	1	
23	93210-26489	O-RING 2.62*48.9	護油圈	1	
24	93210-35900	O-RING 3.5*90	護油圈	1	
25	95201-061005-B	NUT, HEXAGON	六角螺帽	1	
26	96312-06020-C	SCREW, PAN HEAD WITH WASHER	十字孔頭螺絲附墊圈	2	
27	96414-06012-B	BOLT, FLANGE	凸緣螺栓	2	
28	96613-05012-B	BOLT, HEXAGON WITH WASHER	六角十字穴螺栓附墊圈	2	
29	97301-061215-B	WASHER, SPRING	彈簧墊圈	1	
30	97506-1272147-B	SPRING, STOP SWITCH	剎車開關拉伸彈簧	1	

四十、REVERSE RELEASE SWITCH 倒檔釋放鈕



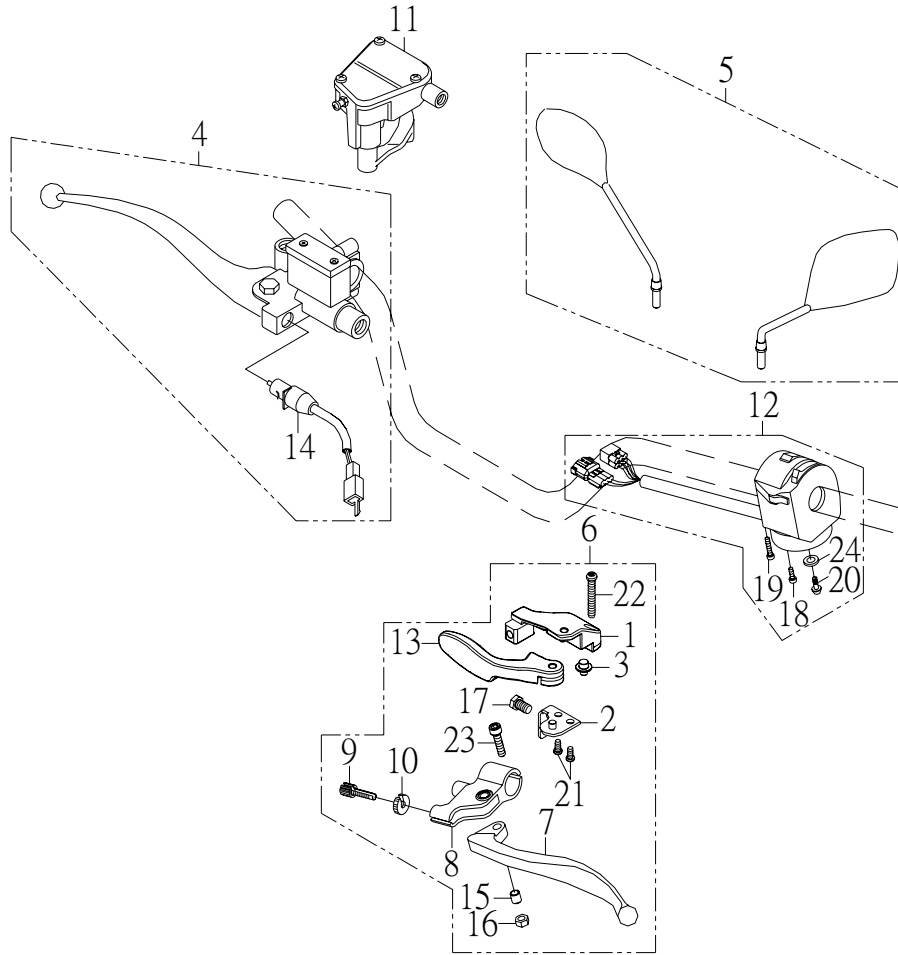
NO. 項目	PARTS NO. 零件號碼	PARTS NAME 零件名稱		Q'TY 用量	NOTE 備註
1	24201-CGV-00	HOLDER, GEAR CABLE	排檔鋼索固定座	1	
2	61920-CGV-00	CABLE REVERSE	倒檔鋼索	1	
3	61960-CGV-00	REVERSE RELEASE SWITCH ASS'Y	倒檔釋放鈕總成	1	
4	61961-CGV-00	HULL	釋放鈕本體	1	
5	61962-CGV-00	SLIDER	釋放鈕滑塊	1	
6	61963-CGV-00	COVER	釋放鈕底蓋	1	
7	61964-CGV-00	SHAFT	釋放鈕心軸	1	
8	61965-CGV-00	KNOB	釋放鈕旋鈕	1	
9	93110-09154	OIL SEAL SD 9*15*4	油封	1	
10	94712-03015-K	SCREW, FLAT HEAD	十字孔埋頭螺絲	1	
11	95101-05012	NUT, SPRING	U型板螺帽	2	
12	96110-31224-K	SCREW, TAPPING	自攻螺絲	4	
13	96112-51616-K	SCREW, TAPPING	自攻螺絲	2	
14	96312-03008-B	SCREW, PAN HEAD WITH WASHER	十字孔頭螺絲附墊圈	1	
15	96414-06016-B	BOLT, FLANGE	凸緣螺栓	1	
16	97201-030810-B	WASHER, PLANE	平面墊圈	1	
17	97220-222610	WASHER	釋放鈕封圈	1	
18	97510-1210090-B	SPRING	扭轉彈簧	1	

四十一、HANDLE SWITCH, LEVER 把手開關、拉桿



NO.	PARTS NO.	PARTS NAME	Q'TY	NOTE
項目	零件號碼	零件名稱	用量	備註
1	42861-QUA-01	GEAR SHIFT BRACKET	1	變檔開關座
2	42863-QUA-01	LOCK, GEAR SHIFT LEVER	1	拉柄鎖位板
3	42865-QUA-01	PIN, LEVER FIXTURE	1	變檔拉柄固定銷
4	45870-JOW-00	MASTER CYLINDER SUB ASS'Y	1	主缸總成
5	56270-ROA-00	MIRROR ASS'Y, HANDLE	1	後照鏡組
6	62910-CEW-00	LEVER ASS'Y, HANDLE	1	左拉桿組
7	62912-RAM-01	LEVER, L	1	左拉桿
8	62915-RAM-01	LEVER HOLDER, L	1	左拉桿固定座
9	62916-RAM-00	BOLT, WIRE ADJUSTING	1	離合器線調整螺栓
10	62917-RAM-00	NUT, WIRE ADJUSTING	1	離合器線調整螺帽
11	62920-JOW-00	THROTTLE ASS'Y	1	節流座總成
12	62930-CGV-00	HANDLE SWITCH ASS'Y L	1	左把手開關總成
13	62971-CEW-00	LEVER, PARKING	1	駐車拉柄
14	62980-JOW-00	FRONT STOP SWITCH	1	前剎車燈開關
15	93510-060809-C	COLLAR, LEVER	1	拉桿軸環
16	95311-061006-G	NUT, NYLON	1	尼龍螺帽
17	96210-10016-G	BOLT, HEXAGON 10*16	1	六角螺栓
18	96310-05030-G	SCREW, PAN HEAD	1	十字孔頭螺絲
19	96310-05040-G	SCREW, PAN HEAD	1	十字孔頭螺絲
20	96310-06010-G	SCREW, PAN HEAD	1	十字孔頭螺絲
21	96310-06012-G	SCREW, PAN HEAD 6*12	2	十字孔頭螺絲
22	96310-06040-G	SCREW, PAN HEAD 6*40	1	十字孔頭螺絲

四十一、HANDLE SWITCH, LEVER 把手開關、拉桿



NO.	PARTS NO.	PARTS NAME	Q'TY	NOTE
項目	零件號碼	零件名稱	用量	備註
23	96510-06022-G	BOLT	1	六角承窩螺栓
24	97201-061310-B	WASHER, PLATE 6.5*13*1.0	1	平面墊圈